



INSTALLATION INSTRUCTIONS

Ascent Front Bumper

Part Number: 107638

Application: 2021+ Ford F150

GENERAL SAFETY PRECAUTIONS

Your safety, and the safety of others, is very important. To help you make informed decisions about safety, we have provided installation and operating instructions and other information on labels and in this guide. This information alerts you to potential hazards that could hurt you or others. It is not possible to warn you about all potential hazards associated with this product, you must use your own good judgment.

CARELESS INSTALLATION AND OPERATION CAN RESULT IN SERIOUS INJURY OR EQUIPMENT DAMAGE. READ AND UNDERSTAND ALL SAFETY PRECAUTIONS AND OPERATING INSTRUCTIONS BEFORE INSTALLING AND OPERATING THIS PRODUCT.

This guide identifies potential hazards and has important safety messages that help you and others avoid personal injury or death. WARNING and CAUTION are signal words that identify the level of hazard. These signal words mean:

▲WARNING signals a hazard that could cause serious injury or death, if you do not follow recommendations. **▲CAUTION** signals a hazard that may cause minor to moderate injury, if you do not follow recommendations.

This guide uses **NOTICE** to call attention to important mechanical information, and Note: to emphasize general information worthy of special attention.

▲ WARNING

IMPACT AND MOVING PARTS ENTANGLEMENT HAZARD

Failure to observe these instructions could lead to severe injury or death

- **Always** Know Your Winch. Take time to fully read the Instructions and/or Operations Guide, and/or Basic Guide to Winching Techniques, in order to understand your winch and its operations.
- **Never** work under vehicle before properly securing vehicle.
- **Always** use appropriate and adequate care in lifting components into place.
- **Never** work under vehicle before properly securing vehicle.
- **Always** use appropriate and adequate care in lifting components into place.
- **Never** use a jack to support the vehicle.
- **Always** use jack stands in pairs to support the vehicle.
- **Always** use jacks or jack stands only on a hard, stable, and level surface.
- **Never** exceed the rated capacity of a jack or jack stands.
- **Always** verify that the parking brake is set, the transmission is in park (automatic) or reverse (manual) and the rear wheels are blocked before working on vehicle.
- **Never** work under vehicle before properly securing vehicle.
- **Always** use appropriate and adequate care in lifting components into place.
- **Always** insure components will remain secure during installation and operation.
- **Always** tighten all nuts and bolts securely, per the installation and operation.
- **Always** perform regular inspections and maintenance on the winch, winch mount and related hardware.
- **Always** replace all worn or damaged parts before operating.
- **Never** operate this WARN product with damaged or missing parts.
- **Always** use extreme caution when drilling on any vehicle. Make sure that all fuel lines, brake lines, electrical wires, and other objects are not punctured or damaged when / if drilling on the vehicle. Thoroughly inspect the area to be drilled (on both sides of material) prior to drilling, and relocate any objects that may be damaged. Failure to inspect the area to be drilled may result in vehicle damage, electrical shock, fire or personal injury.
- **Always** use extreme caution when cutting and trimming during fitting.
- **Always** wear safety glasses when installing this kit. A drilling operation will cause flying metal chips. Flying chips can cause eye injury.
- **Always** remove jewelry and wear eye protection.
- **Never** lean over battery while making connections.
- **Never** route electrical cables across any sharp edge, through or near moving parts, near parts that become hot.

Read installation and operating instructions thoroughly.

WARN INDUSTRIES, INC. 12900 S.E. Capps Road,
Clackamas, OR USA 97015-8903, 1-503-722-1200, FAX: 1-503-722-3000
Customer Service: 1-800-543-9276
Dealer Locator Service: 1-800-910-1122
International Sales/Customer Service: 1-503-722-3008
International Fax: 1-503-722-3005

⚠ CAUTION

MOVING PARTS ENTANGLEMENT HAZARD

Failure to observe these instructions could lead to minor or moderate injury

- Part edges may be sharp!
- Always use proper posture / lifting technique or get lifting assistance while handling and installing product.

Read installation and operating instructions thoroughly.

NOTICE

EQUIPMENT DAMAGE

- **Never** tow vehicle by attaching a tow bar to the eyelets on the bumper.
- Do not attach tow bars directly to the bumper. Damage to bumper may occur. WARN bumpers are not designed to be used for flat towing. Consult with the manufacturer of your tow bar system for the proper vehicle tow bar brackets..

Read installation and operating instructions thoroughly.

NOTICE

- **This kit is only intended for mid-frame applications with a rating of 12,000 lb. or less**
- **NOT compatible with Adaptive Cruise Control models**

BEFORE YOU BEGIN



This product may interfere with driver assist systems such as adaptive cruise control and parking assist systems that have sensors or cameras installed in the bumpers or front grill area. If your vehicle is equipped with any of these systems or features, consult your vehicle owner's manual before installing this product. These systems may need to be disabled as a result of installing this product.

TABLE OF CONTENTS

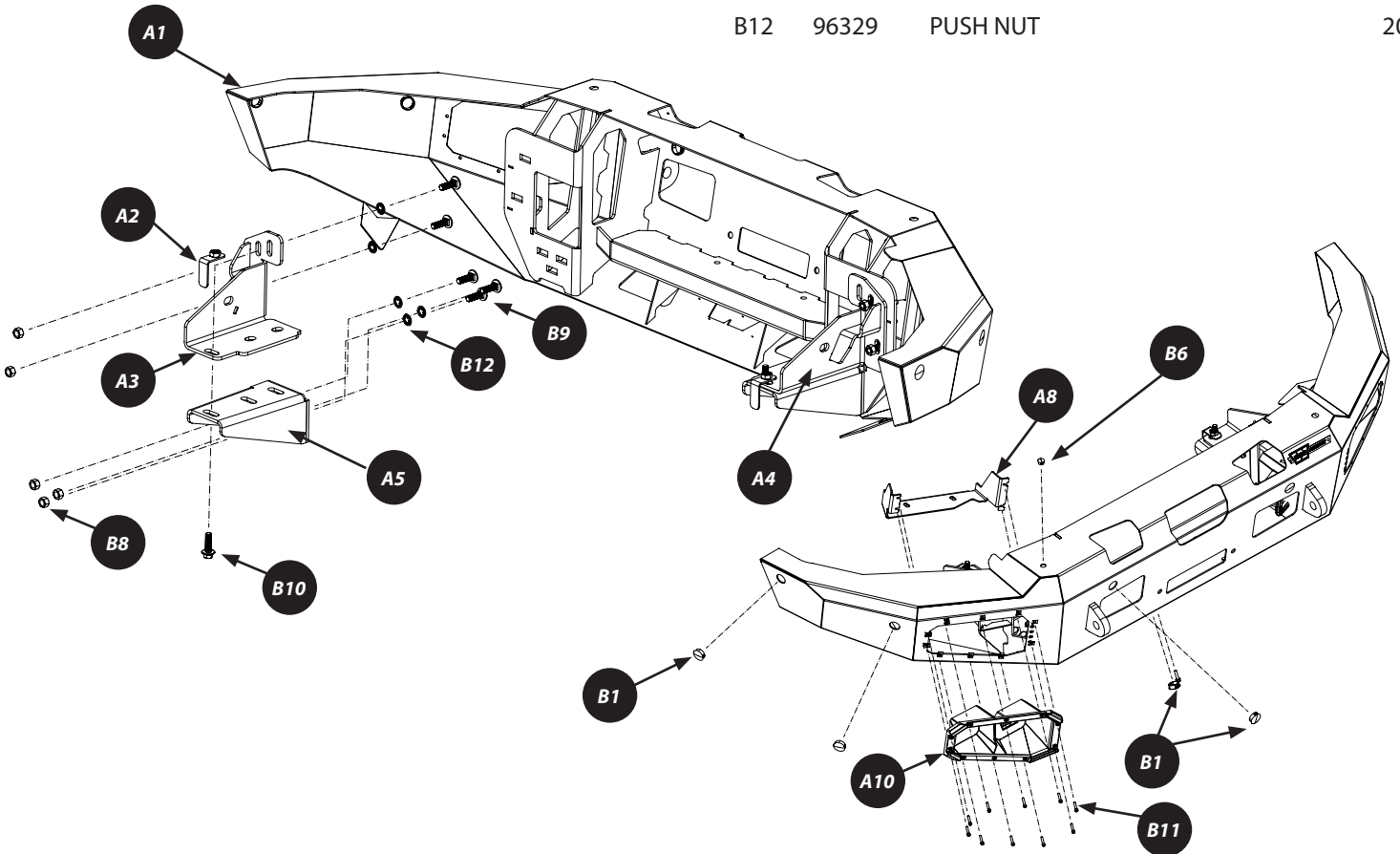
Tools Required.....	page 2
Parts List.....	page 3
Torque Specifications.....	page 3
Installation.....	page 4-7
Maintenance/Care.....	page 7

TOOLS REQUIRED

- Standard wrenches
- Standard sockets

PARTS LIST

Item	PN	Description	Qty.	Item	PN	Description	Qty.
A1	107639	BUMPER	1	B1	102248	1-3/32 PLASTIC PLUG	8
A2	107658	NUT PLATE	2	B2	68380	CABLE TIE	8
A3	100855	UPPER UFRAME BRACKET LH	1	B3	105967	CABLE TIE MOUNT ADHESIVE 1X1	6
A4	100856	UPPER FRAME BRACKET RH	1	B4	83125	M6 X 1.0 FLANGED HEX NUT	2
A5	107746	LOWER FRAME RAIL BRACKET	2	B5	64108	M6-1.0 x 25 FLANGED HEX CAPSCREW	2
A6	101402	LIGHT BRACKET KIT	1	B6	100661	9/16 LOCKING PLASTIC PLUG	2
A7	100903	LIGHT BRACKET LH	1	B7	101259	1/2" PUSHNUT BOLT RETAINER	10
A8	100904	LIGHT BRACKET RH	1	B8	93099	M12-1.75 NYLON NUT	10
A9	94889	LIGHT PORT LH	1	B9	107751	M12-1.75X40 CARRIAGE BOLT	10
A10	94888	LIGHT PORT RH	1	B10	107752	M12-1.75X40 FLANGE BOLT	2
				B11	91541	STAINLESS STEEL CAPSCREW	20
				B12	96329	PUSH NUT	20



TORQUE SPECIFICATIONS

Please use the recommended torque specifications when assembling this product unless otherwise specified in the instructions.

FASTENER SIZE	FASTENER TORQUE		FASTENER SIZE	FASTENER TORQUE	
	lb-ft	(N.m)		lb-ft	(N.m)
1/4"	8	(11)	M4	(2)	3
5/16"	17	(23)	M5	(4.5)	6
3/8"	30	(40)	M6	(7.5)	10
7/16"	48	(66)	M8	(18)	25
1/2"	74	(100)	M10	(37)	50
9/16"	106	(144)			
5/8"	148	(200)			
3/4"	269	(364)			

INSTALLATION INSTRUCTIONS

1. From underneath the truck, locate the large harness connector on top of the passenger side frame rail and unplug.

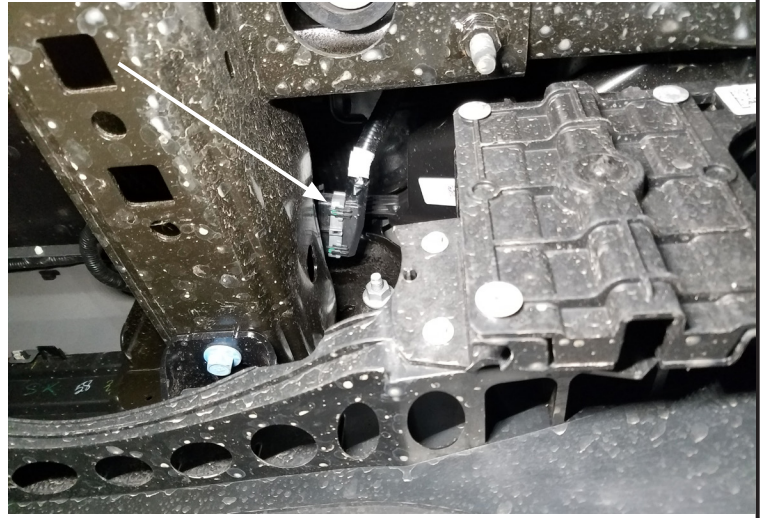


Figure 1

2. Using a 24mm socket, remove the six nuts (3 per side) that hold the bumper to the frame. **Note: There is one nut on the inboard side of each frame pad and two on the outboard side.**

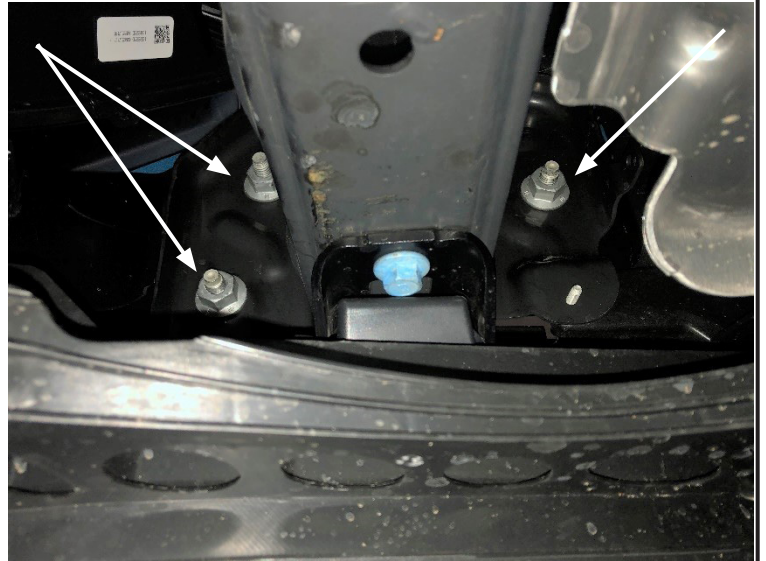


Figure 2

CAUTION Always use assistance when moving or lifting heavy parts.

3. With assistance, remove the bumper from the vehicle. **TIP: Tilt the bottom of the bumper out first.**



Figure 3

INSTALLATION INSTRUCTIONS

4. With the stock bumper off of the vehicle and on a stable surface, remove the factory wiring harness and parking sensors, if equipped.

TIP: When removing parking sensors, make sure to mark the location and orientation of each parking sensor and carriage. Numbering each sensor with tape and marking the top with a paint pen works well. The stock bumper may need to be further disassembled for wire harness removal using a 15mm socket and a T30 driver bit.



Figure 4

5. From the bottom of the frame rail, use a 15mm socket, to remove the two tow hook bolts holding the tow hooks in place.
6. Remove tow hooks (**keep nut plates in position**). Retain bolts for re-install.



Figure 5

7. With tow hook nut plate in original position, place one upper frame bracket (A3 or A4) along the side of the frame rail, aligning with the tow hook and factory frame mount holes. **Be sure to slide bracket so it fits up against the factory frame mount.**
8. Place one lower mounting bracket (A5) under the upper frame bracket, aligning tow hook and frame bracket holes. Repeat for other side.
9. With the mounting brackets aligned with the frame tow hook holes, re-install the factory tow hook bolts up through the brackets and into the factory tow hook nut plate. **Do not fully tighten to allow for adjustment.** Repeat for other side.

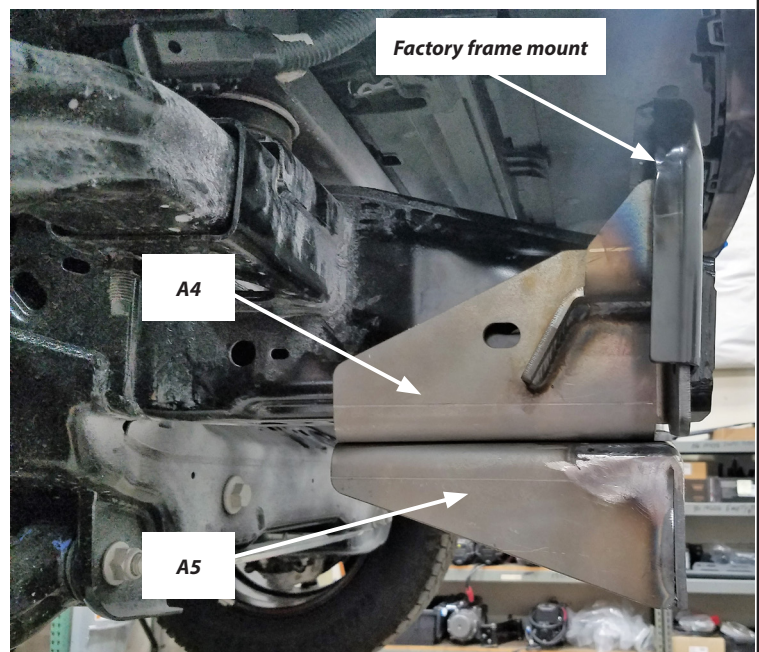
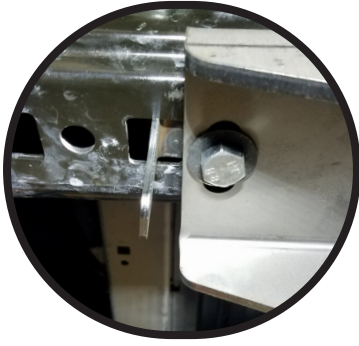


Figure 6

INSTALLATION INSTRUCTIONS

- Place the included nut plate (A2) up through the factory frame's hole that falls immediately behind the new lower mounting bracket.



- Install one M12 flange bolt up through lower frame bracket, frame and into nut plate. *Do not fully tighten to allow for adjustment.*

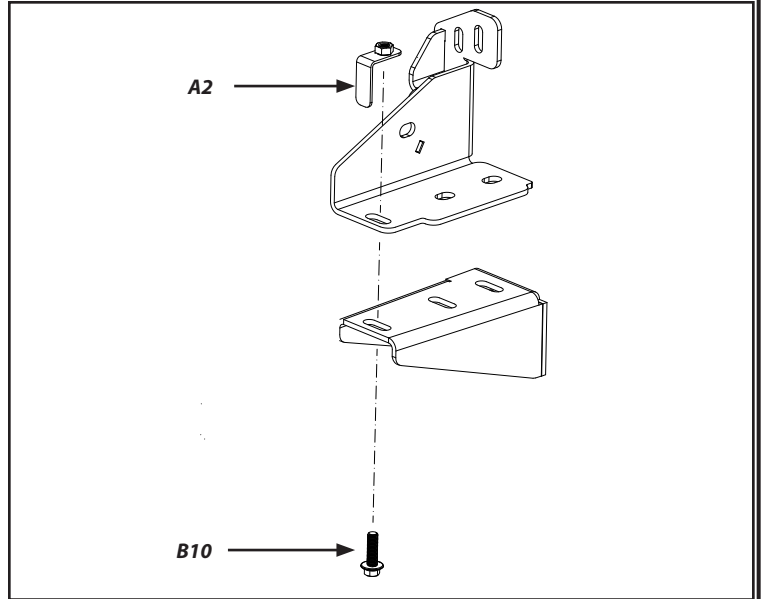


Figure 7

- Install the 10 carriage bolts (B9) into the new bumper with push nuts (B12) as shown. *TIP: A large socket may be helpful in pressing the push nuts on. Leave them loose enough to allow the carriage bolts to slide in their slots.*

- Install the factory wiring harness into the new bumper ensuring the harness will not be rubbed or pinched during winch operation.

- Secure harness up and away from potential moving parts (i.e. winch rope) using supplied cable ties (B2) and cable tie adhesive anchors (B3).

- Install the parking sensors and carriages in the new bumper, ensuring that they are reinstalled in the same location and orientation as they were originally.

- Install the fairlead before installing winch into the bumper, using the hardware included in your winch kit. Ensure that the bolt heads are on the inside of the bumper as shown.

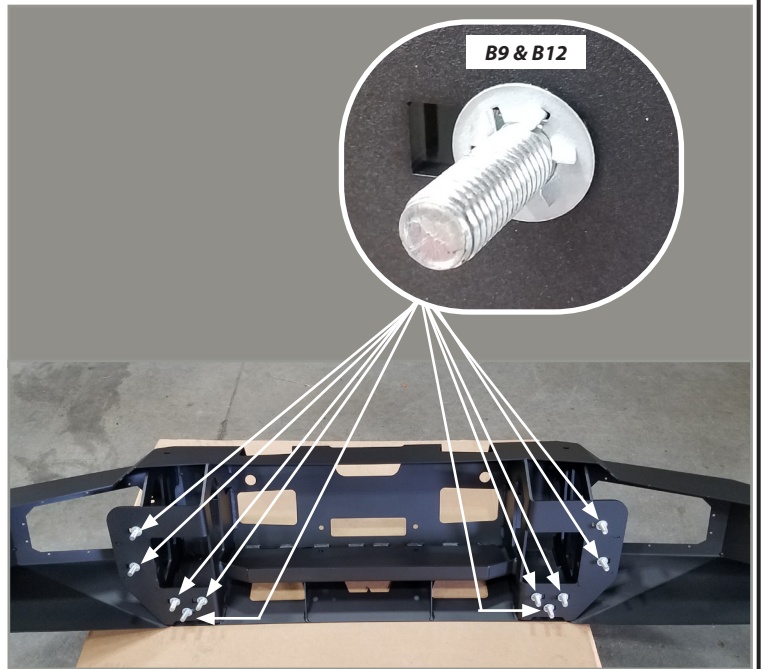


Figure 8



Figure 9

INSTALLATION INSTRUCTIONS

17. Install the winch in the bumper per winch installation instructions. **TIP: It is easiest to place the winch feet in the bumper first and then roll the winch forward into its final location.**
18. Tighten winch to torque specifications.
19. Plug the two winch access holes with plugs (B1).
20. Route winch power cables up along frame rail and toward battery. **NOTE: Make sure to route wires/cables away from sharp edges, heat and moving parts. NOTE: Cable tie in regular intervals to keep cables/wiring in place.**

CAUTION Always use assistance when moving or lifting heavy parts.

21. With assistance, lift the new bumper in position and slide the carriage bolts into the mounting holes on each frame bracket.
22. Loosely secure the bumper with the ten nuts (B8).
23. With the bumper loosely held in place, center it left and right.
24. Once bumper is centered, tighten all hardware to torque specifications. **TIP: Tighten the bolts into the truck frame first and then the nuts on the carriage bolts.**
25. While holding light bracket (A7 and A8) in place (from under and behind bumper), line up light port (A9 and A10) through front bumper light port to bracket. Secure pieces together with stainless steel socket head screws (B11). **NOTE: Light ports are equipped with removable panels for lights. Lights shown installed sold separately.**
26. If not installing sensors, plug unused holes with plugs (B1) and ascent bumper accessories with plugs (B6). Refer to exploded view on page 3.
27. The remaining hardware (B4 and B5) are to be used to install license plate to new bumper.
28. Tighten **ALL** hardware now, refer to torque specifications on page 3.
29. Reconnect wiring harness and complete winch wiring per winch installation instructions.

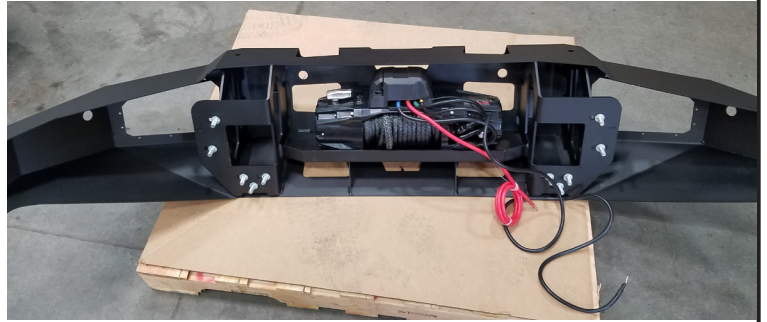


Figure 10



Figure 11



Figure 12

MAINTENANCE / CARE

1. Inspect all parts on the winch, winch mount, and related hardware prior to each use. Replace all hardware that appears rusted or deformed.
2. Inspect all nuts and bolts on the winch, winch mount, and related hardware prior to each use. Tighten all nuts that appear to be loose. Stripped, fractured, or bent bolts or nuts need to be replaced.
3. Check all cables prior to use. Replace cables that look worn or frayed.
4. Check all moving or rotating parts. Remove debris that may inhibit the part from moving freely.