



INSTALL INSTRUCTIONS

Ram 1500 Front Stealth Bumper (Including REBEL)

Product : 413FXX, 4091FXX & 4151FXX

Application : 2013-2018 Ram 1500

Application : 2009-2012 Ram 1500

Application : 2015-2018 Ram REBEL

(Including 2019 RAM 1500 Classic)

I WARNING

Read the instructions completely before beginning installation. Before tightening bolts, drilling or cutting where required, check to make sure there are no obstructions such as brake, fuel or electrical lines which may be damaged. Also keep in mind this is an after-market product and MAY require minor shimming and/or trimming, reaming, etc. for proper fit. Road Armor is not responsible for any damages to vehicle.

ⓘ IMPORTANT NOTICE

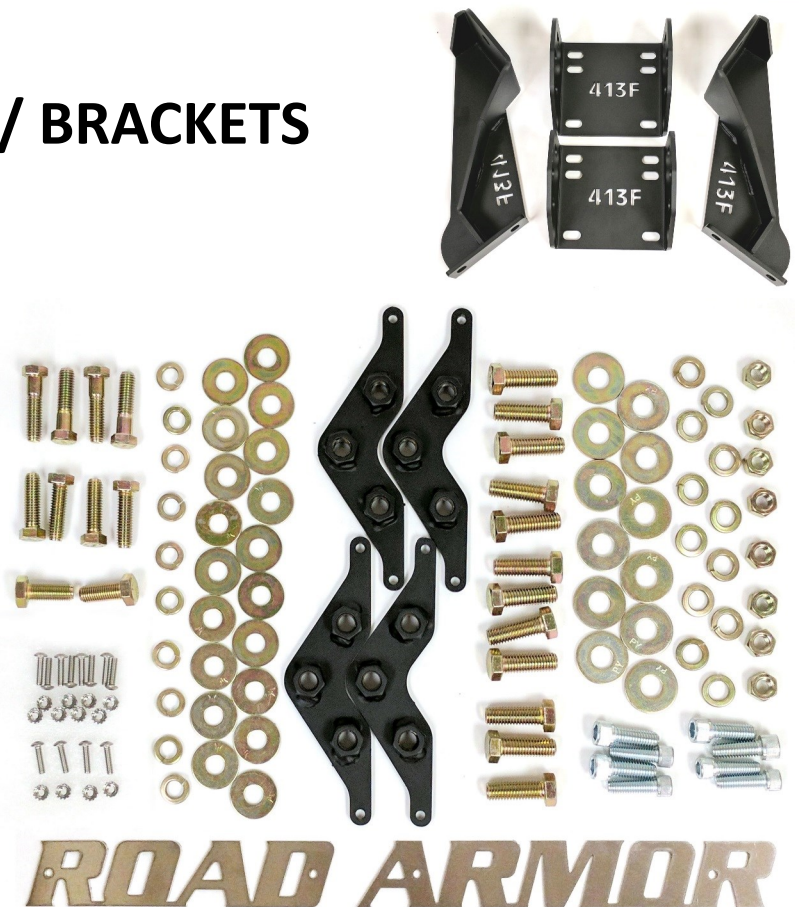
- Be sure to inspect and test fit your product to ensure proper fitment before having it coated, painted, bed lined, etc.
- Road Armor will not be responsible for the cost of coating your unit if any problems with fit or finish are not noted and addressed beforehand.

SAFETY FIRST!

- FOLLOW ALL INSTRUCTIONS, YOUR SAFETY AND THE SAFETY OF OTHERS IS MOST IMPORTANT.
- WEAR APPROPRIATE EYE PROTECTION AND EXERCISE CAUTION WHEN DRILLING / CUTTING

INCLUDED HARDWARE / BRACKETS

- 12 1/2"-13 x 1-1/2" Grade 8 Cap Screw
- 12 1/2" x 1.375" General Purpose Flat Washer
- 12 1/2" Split Lock Washer
- 12 #10-24 x 3/4" Button Socket Cap Screw
- 4 7/16"-14 x 1-1/4" Socket Cap Screw
- 4 3/8"-16 x 1-1/4" Socket Cap Screw
- 12 #10-24 Lock washer K-Lock Nut
- 6 1 1/8" Dome plug
- 10 7/16" Medium Split Lock Washer
- 4 7/16"-14 x 1-1/2" Grade 8 Hex Cap Screw
- 4 7/16"-14 x 1-3/4" Grade 8 Hex Cap Screw
- 18 7/16" x 1.250" General Purpose Flat Washer
- 8 7/16"-14 Grade 8 Finished Hex Nut
- 2 M12-1.5 x 30mm Finish Hex Cap Screw
- 4 Triple nut plate (RA)



NOTE

****Do NOT Remove Grille on REBEL****
Remove fender liners attached to bumper (3 Bolts each side.)

1 Remove dust cover from top of the grill

2 Remove the Four bolts from the top of the grill, and then remove the grill

3 Remove screw from back of Fascia in the fender well, both sides

NOTE

Steps are a little different between chrome bumper, and one piece bumper. Step 4,5 Chrome Only

4 Pull off Fascia piece, this takes some effort (Chrome Bumper)

5 Remove Fascia support using a socket and extension (Chrome Bumper)

6 Remove 4 bolts from backside of bumper then take off the bumper (Chrome Bumper)

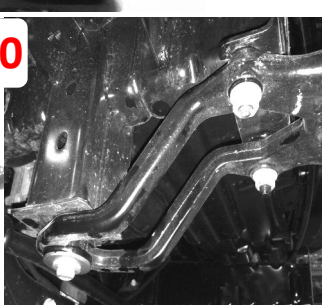
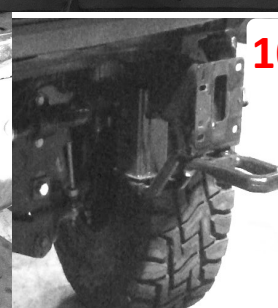
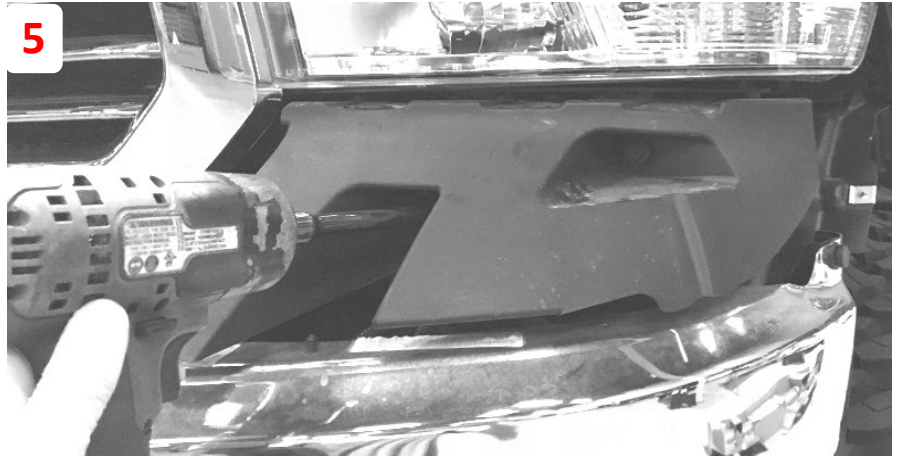
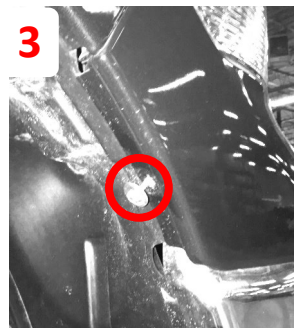
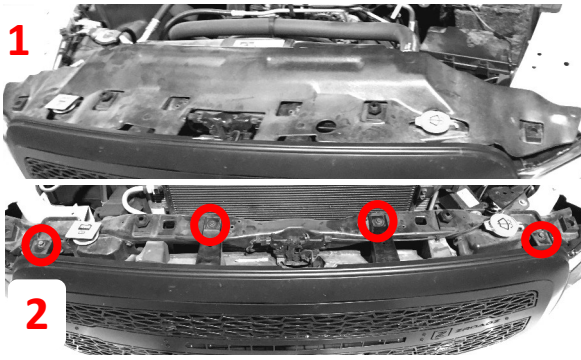
NOTE

Steps 6,7 for One Piece Bumper Only

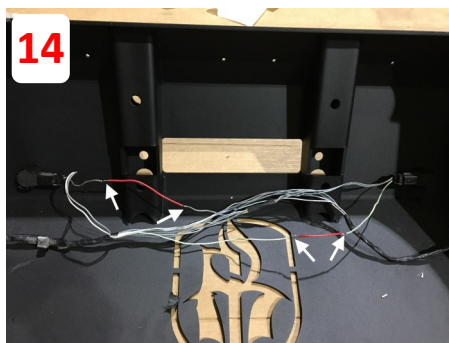
7 Remove 4 bolts underneath bumper connecting it to the support. (One Piece)

8 Remove bumper along with support (one Piece)

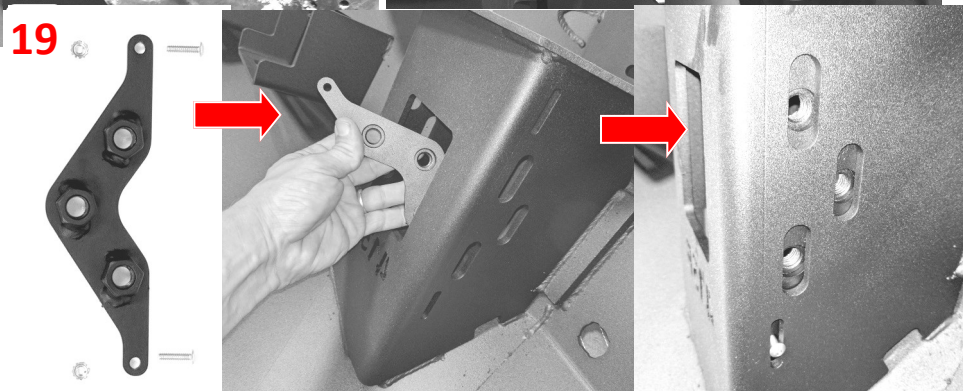
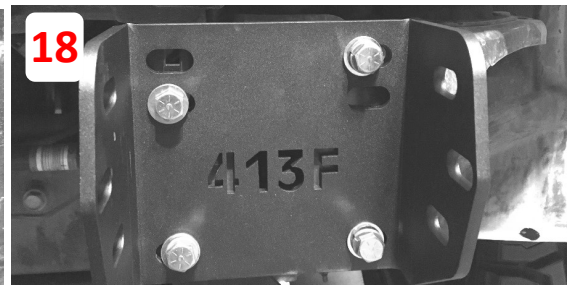
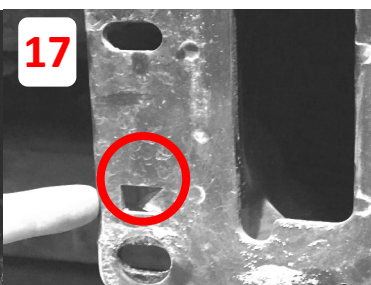
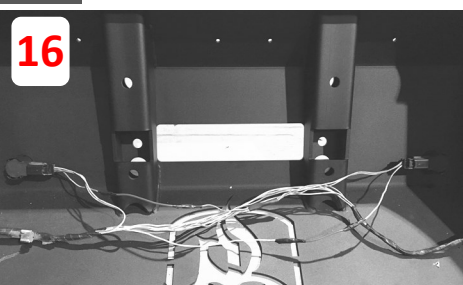
9 Unplug bumper harness on driver side under the headlight as shown



- 11** Carefully unplug and remove sensors and sensor harness
- 12** Install sensors into Road Armor bumper then fit up the bumper harness
- NOTE** Sensor Bezels must be acquired from dealer for non-chrome bumpers
PARTS #5LS52TZZAA (outer) / #5LS53TZZAA (middle) / #5LS54TZZAA (inner) // (2 Each)
- 13** There is only one wire that is sometimes short. Take the harness weather stripping off.
- 14** Snip only the one wire per sensor that is short. Take a piece of extra 22 gauge wire that's 3-6 inches long and extend each wire.
- 15** Wrap each splice with protectant and rewrap wire harness to keep protected.



- 16** Install lights and or winch now at your option, but this can be done later if you prefer
- 17** There is a tab that is bent backwards on the factory bracket. You will need to cut or grind down to allow for the new mounting brackets to be installed.
- 18** Install the two piece mounting brackets by sandwiching them around the factory bracket and



- 19 Install the triple nut plate into the weld in bracket as shown X4.
- 20 Mate up bumper and fully tighten once you have received the desired reveal.

****NOTE** INSTALLATIONS WILL VARY BETWEEN MODELS, INCLUDING HARDWARE CONTENT.**



FINISHED