

# 2016-20XX GMC 1500

## FRONT BUMPER INSTALLATION INSTRUCTIONS



## SAFETY

**Know safety, no injury. Know injury, no safety. ~Author Unknown**

- **READ ALL SAFETY INSTRUCTIONS BEFORE INSTALLATION**
  - FOLLOW ALL INSTRUCTIONS FOR PROPER ASSEMBLY
  - WEAR APPROPRIATE EYE PROTECTION
  - EXERCISE CARE WHEN LIFTING COMPONENTS
  - USE APPROPRIATE TORQUE FOR BOLTS
  - BLUE THREAD LOCKING COMPOUND IS RECOMMENDED ON ALL BOLTS
- SUGGESTED TORQUE VALUES FOR STEEL GRADE SAE 5 BOLTS

BOLT DIAMETER (INCH)	TREADS PER INCH	TORQUE (POUND-FEET)
1/4	20	7
5/16	18	14
3/8	16	25
7/16	14	40
1/2	13	60
9/16	12	88
5/8	11	120
3/4	10	200
7/8	9	302
1	8	466



## 2016-20XX GMC 1500 FRONT

### I. PARTS LIST

<u>QUANTITY</u>	<u>PART NUMBER</u>	<u>DESCRIPTION</u>
1	600-56-0436	FRONT BUMPER
1	60K-56-0057	HARDWARE KIT #57
1	60K-56-0058	HARDWARE KIT #58
2	307-13-0132	RUBBER GROMMET 0.5" X 0.25" X 0.81" X 1.0"
1	601-56-2868	WELDNUT TAB 3
1	601-56-2958	RIGHT BAR MOUNT
1	601-56-2959	LEFT BAR MOUNT
1	601-56-3191	RIGHT FRAME MOUNT WELDMENT
1	601-56-3192	LEFT FRAME MOUNT WELDMENT

### II. TOOL LIST

1. 15mm socket
2. 18mm socket
3. 15mm wrench
4. 18mm wrench
5. T15 Torx bit
6. 7mm socket
7. Flat head screwdriver
8. ¾" wrench
9. ¾" socket

### III. REMOVAL OF OEM BUMPER

1. Remove two screws on bottom of OEM fender flare with T15 Torx bit. (both sides)





## 2016-20XX GMC 1500 FRONT

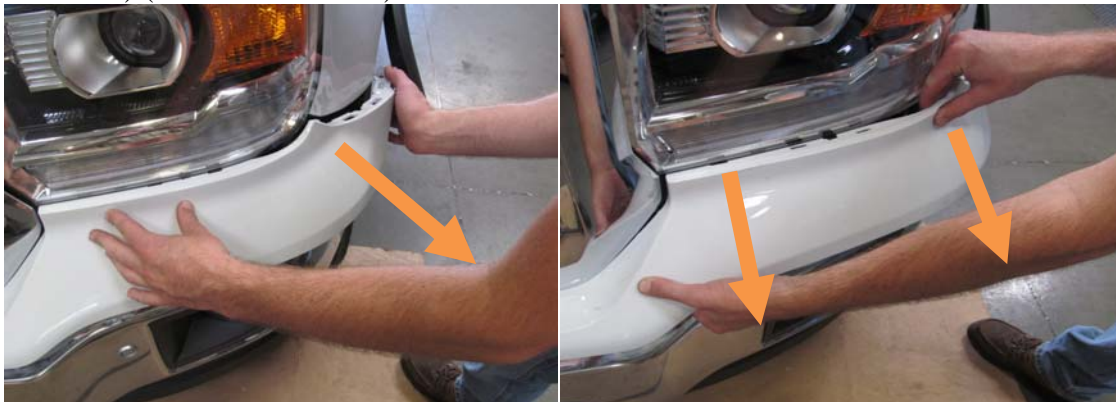
2. Gently pull away from truck on OEM fender flare as shown. (both sides)



3. Remove screw holding on plastic trim piece with 7mm socket. (both sides)



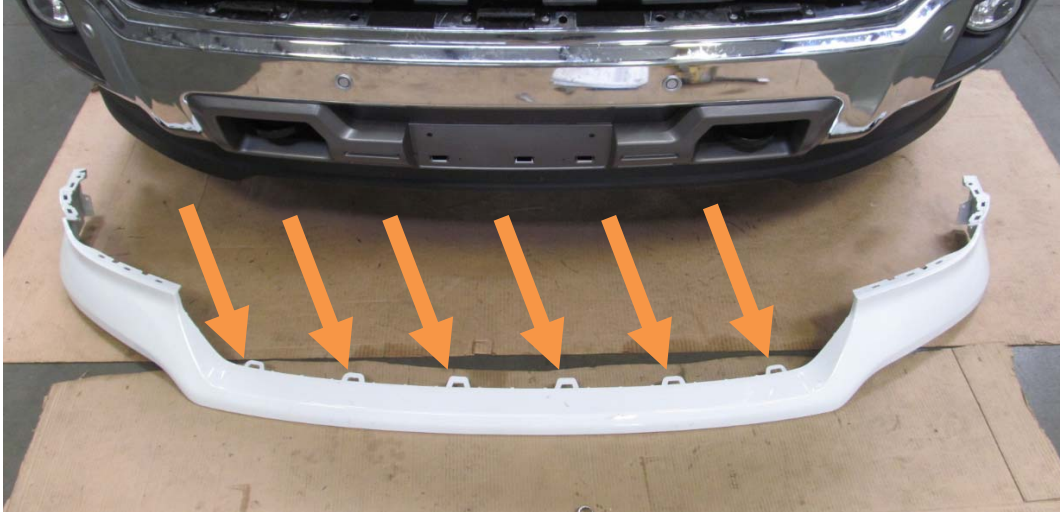
4. Pull out on edge of plastic trim to release the tabs as shown. Pull in direction of arrows. (both sides) (2014-2015 shown)



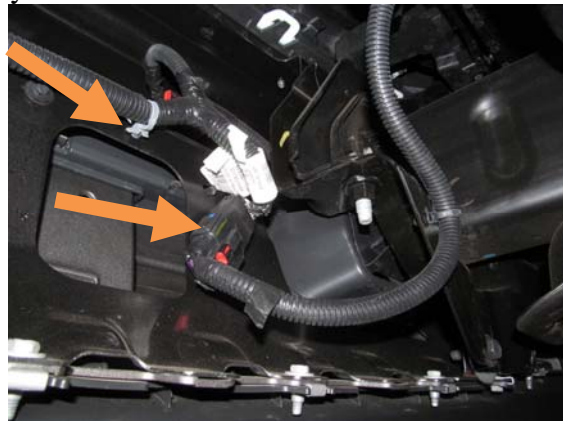


## 2016-20XX GMC 1500 FRONT

5. Release six tabs on center of plastic trim below the grill. Have a friend gently pull out on the plastic trim as you release the tabs behind the grill. A flathead screwdriver works well to help pry the tabs. Gently set aside plastic trim; it will be reused. (2014-2015 shown)



6. Unplug the OEM fog light and sensor wiring harness and place it on top of the factory skid plate out of the way.



7. Remove OEM bumper bolt behind bumper with 18mm socket. (both sides)



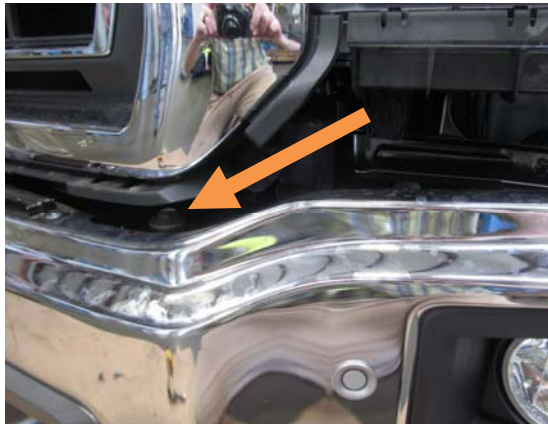


## 2016-20XX GMC 1500 FRONT

8. Remove three bolts from OEM side bumper support (in front of tires) with 15mm socket. (both sides)



9. Remove OEM bumper bolt with 18mm wrench. (both sides) Remove OEM bumper and set aside.



10. Remove six bolts holding on OEM frame flanges to frame with 15mm socket.





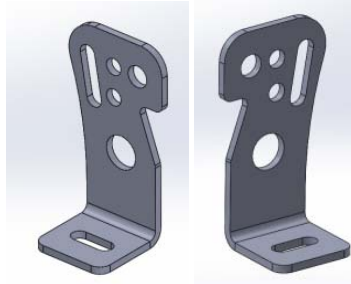
## 2016-20XX GMC 1500 FRONT

11. Remove two bolts attaching OEM tow hooks with 18mm socket and wrench. (both sides)  
Set tow hooks aside.



### IV. INSTALLATION OF HAMMERHEAD BUMPER

1. Install all lights and sensors in Hammerhead bumper at this time.  
Use included Bar mount brackets (601-56-2958 and 2959) and Hardware kit #57 to attach 20" bar in bumper to mount in bumper. Use hole in bracket and bumper that works best with your light bar. Tighten bolts from hardware kit #57 with 7/16" socket and wrench.



2958-2959 brackets



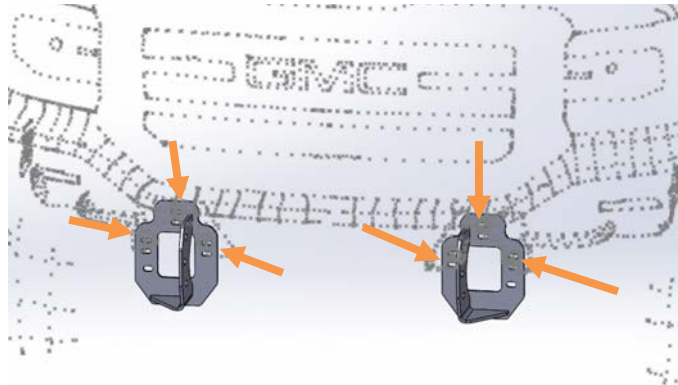


## 2016-20XX GMC 1500 FRONT

2. Reinstall OEM plastic trim.
3. Layout frame mounts, weldnut tabs and hardware as shown.



4. Install Hammerhead frame mounts with OEM hardware and loosely tighten. Use the top holes in the mounts.



5. Using Hardware from kit #58 and Weldnut tab #3 (601-56-2868) Qty-2, install and align Hammerhead bumper. Tighten all hardware.

Note: Align bumper a minimum of  $\frac{1}{4}$ " below plastic trim. When truck flexes off-road, this distance allows your bumper and body to have clearance.



Congratulations! Your installation is now complete.  
Thank you for your purchase.