

2007-2013 TOYOTA TUNDRA

REAR BUMPER INSTALLATION INSTRUCTIONS



SAFETY

Know safety, no injury. Know injury, no safety. ~Author Unknown

- **READ ALL SAFETY INSTRUCTIONS BEFORE INSTALLATION**
 - FOLLOW ALL INSTRUCTIONS FOR PROPER ASSEMBLY
 - WEAR APPROPRIATE EYE PROTECTION
 - EXERCISE CARE WHEN LIFTING COMPONENTS
 - USE APPROPRIATE TORQUE FOR BOLTS
 - BLUE THREAD LOCKING COMPOUND IS RECOMMENDED ON ALL BOLT

California Proposition 65



WARNING

Cancer and Reproductive Harm

www.P65Warnings.ca.gov

DO NOT PAINT OVER THIS LABEL. REPLACE IF DAMAGED OR LOST

DKB150_00



2007-2013 TOYOTA TUNDRA REAR BUMPER

Suggested Torque Values For Steel Grade 5 Standard Bolts		
BOLT DIAMETER (INCH)	THREADS PER INCH	TORQUE (POUND - FEET)
1/4	20	7
5/16	18	14
3/8	16	25
7/16	14	40
1/2	13	60
9/16	12	88
5/8	11	120
3/4	10	200
7/8	9	302
1	8	466

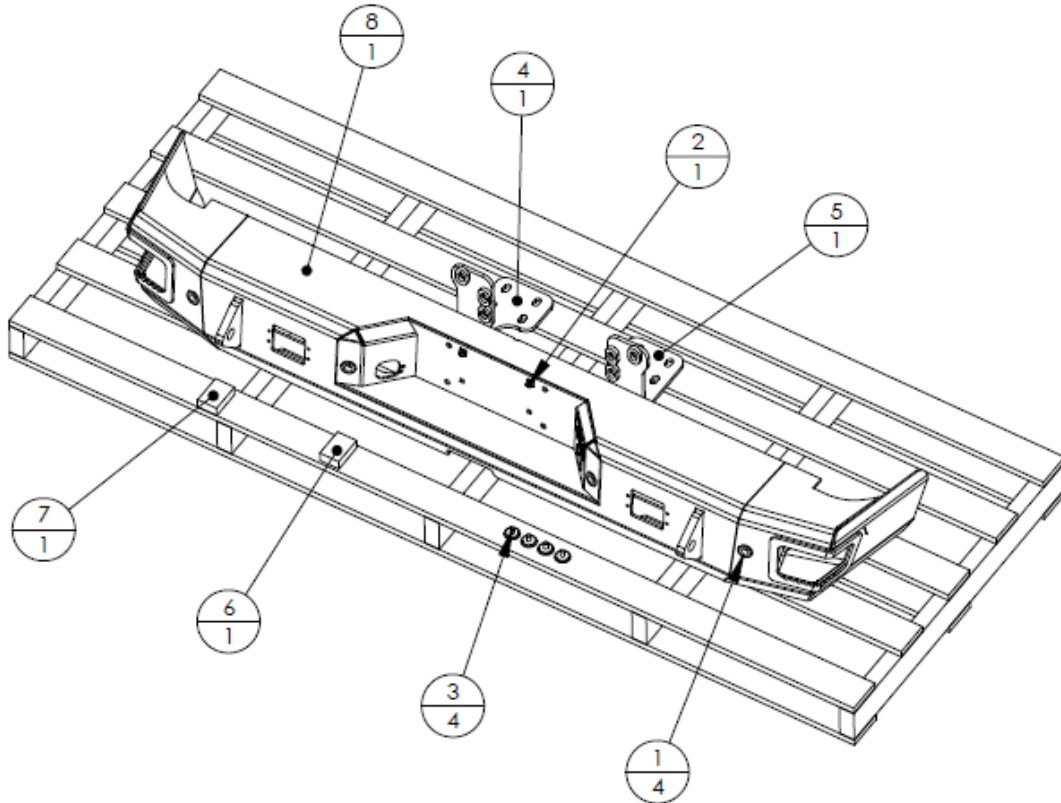
Suggested Torque Values For Steel Grade 8.8 Metric Bolts		
BOLT DIAMETER (mm)	THREAD PITCH (mm)	TORQUE (POUND-FEET)
6	1.0	7
8	1.25	16
10	1.5	32
12	1.75	55
14	2.0	88
16	2.0	140
18	2.5	195
20	2.5	275
22	2.5	375
24	3.0	475

I. PARTS LIST

ITEM NO.	QTY	PART NUMBER	DESCRIPTION	
1	4	307-13-0229	PARK ASSIST SENSOR GROMMET	-
2	1	443-01-0086	LICENSE PLATE MOUNTING KIT	-
3	4	601-56-2316	OUTSIDE PLUG	-
4	1	601-56-3490	DRIVER FRAME MOUNT WELDMENT	-
5	1	601-56-3491	PASS FRAME MOUNT WELDMENT	-
6	1	60K-56-0001	HARDWARE KIT #1	-
7	1	60K-56-0109	HARDWARE KIT #109	-
8	1	60P-56-0525	600-56-0525 POLISHED	-



2007-2013 TOYOTA TUNDRA REAR BUMPER _____



REMOVE CONTENTS FROM BOX AND VERIFY ALL PARTS ARE PRESENT.

**If there are any questions, call 1-855-HHTOUGH or email
HHORDERS@hammerheadarmor.com**

II. TOOL LIST

1. Flathead screw driver
2. Phillips head screw driver
3. 12 mm socket/wrench
4. 19mm socket/wrench
5. 3/4" socket/wrench.

III. REMOVAL OF OEM BUMPER

1. Disconnect wire harness of park assist sensors and disconnect each individual sensor from bumper. (take care to leave nothing attached to OE bumper before removal of bumper)
2. With Phillips head screw driver, remove OE tag lights and secure out of the way.



2007-2013 TOYOTA TUNDRA REAR BUMPER



3. Remove fasteners from license plate from OE bumper.
4. Behind license plate remove a quarter turn fastener with a Phillips head screw driver.



5. Remove plastic corner piece that is on top of the chrome bumper on each side. Do this by depressing tabs underneath of bumper and pressing upward.



2007-2013 TOYOTA TUNDRA REAR BUMPER



6. Disconnect rear parking assist sensor wire from OE bumper, located behind license plate area. (If applicable)



7. Remove plastic center piece that is cover chrome OEM bumper. Do this by depressing tabs underneath of bumper and pressing upward.





2007-2013 TOYOTA TUNDRA REAR BUMPER

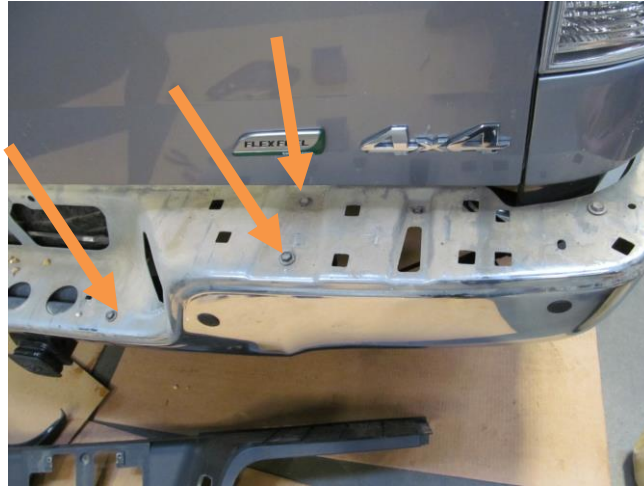


8. Using 12mm socket/wrench remove six bolts located on top of chrome OE bumper top surface.





2007-2013 TOYOTA TUNDRA REAR BUMPER



9. Use 12mm socket/wrench to remove two bolts located underneath of bumper (one on each side). See Figure 10.



10. Using a 19mm socket remove three bolts from receiver hitch. (Both sides)





2007-2013 TOYOTA TUNDRA REAR BUMPER

IV. INSTALLATION OF HAMMERHEAD BUMPER

1. Using bolts, flat washers, and lock washers from hardware kit #109 and a 22mm socket, position Frame mounts as shown.



2. Align Hammerhead bumper to frame mounts.
3. Using hardware kit 1 secure bumper to frame mounts loosely.
4. Align bumper to center of vehicle.
5. Tighten 8 bolts from hardware kit one using $\frac{3}{4}$ "socket and wrench to specification.
6. Install OEM tag lights into Hammerhead Bumper.
7. Install license plate mounting kit and reattach license plate.
8. Using supplied fasteners carefully install all sensors into Hammerhead bumper.
9. Install flush mount lights in bumper.



Congratulations! Your product installation is now complete.
Thank you for your purchase.