



INSTALL INSTRUCTIONS

Spartan Rear Bumper

Product : 6172XR

Application : 2017+ Ford Super Duty

I WARNING

Read the instructions completely before beginning installation. Before tightening bolts, drilling or cutting where required, check to make sure there are no obstructions such as brake, fuel or electrical lines which may be damaged. Also keep in mind this is an after-market product and MAY require minor shimming and/or trimming, reaming, etc. for proper fit. Road Armor is not responsible for any damages to vehicle.

i IMPORTANT NOTICE

- Be sure to inspect and test fit your product to ensure proper fitment before having it coated, painted, bed lined, etc.
- Road Armor will not be responsible for the cost of coating your unit if any problems with fit or finish are not noted and addressed beforehand.

SAFETY FIRST!

- FOLLOW ALL INSTRUCTIONS, YOUR SAFETY AND THE SAFETY OF OTHERS IS MOST IMPORTANT.
- WEAR APPROPRIATE EYE PROTECTION AND EXERCISE CAUTION WHEN DRILLING / CUTTING

REQUIRED TOOLS

SAE & METRIC Socket set and wrenches

Screw drivers, pry tool, pick tool, pliers

RECOMMENDED TOOLS

INCLUDED HARDWARE

ITEM NO.	PART NUMBER	DESCRIPTION	QTY.
1	408-111	Tow Plug Plate	1
2	Button head and keps nut_A	Button Head Bolt with Keps Nut	12
3	1.5 inch bolt plate	Bolt Plate with Washers and Nut	4
4	11120605	Pushnut Bolt Retainer 7/16" THREAD	2
5	Mirror 11120605	Pushnut Bolt Retainer 7/16" THREAD	2
6	1.125 inch plug	1 1/8" Dome plug	4

**** ROAD ARMOR USE ONLY ****

PROPRIETARY AND CONFIDENTIAL:
THE INFORMATION CONTAINED IN THIS DRAWING IS THE SOLE PROPERTY OF ROAD ARMOR. THE INFORMATION CONTAINED IN THIS DOCUMENT IS PART OF A SINGLE, INTEGRATED SYSTEM. IT SHALL NOT BE REPRODUCED, USED, OR DISCLOSED TO OTHERS WITHOUT WRITTEN PERMISSION FROM ROAD ARMOR.

DIMENSIONS ARE IN INCHES
TOLERANCES:
FRACTIONAL ±
ANGULAR ±0.004 1/16" MIN ±
HOLE POSITION ±0.004 1/16" MIN
HOLE SIZE ±0.004 1/16" MIN
MATERIAL:
PROCESS:
FINISH:
DRAWN: _____
CHECKED: _____
APP. APPROV.: _____
DATE: _____
COMMENTS:

ROAD ARMOR

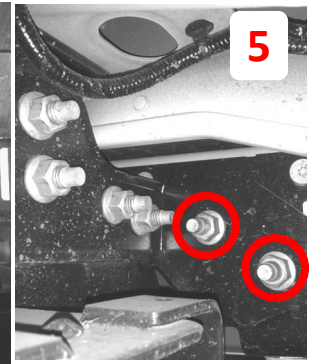
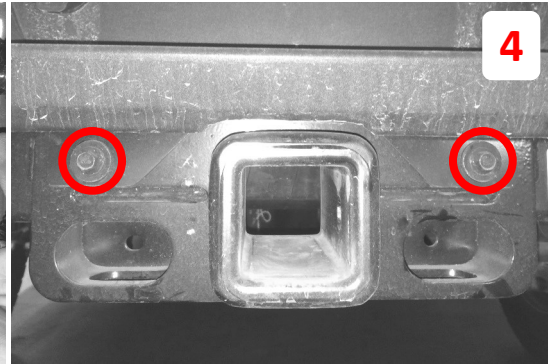
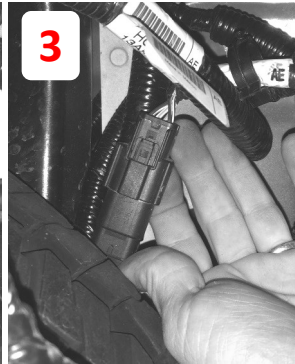
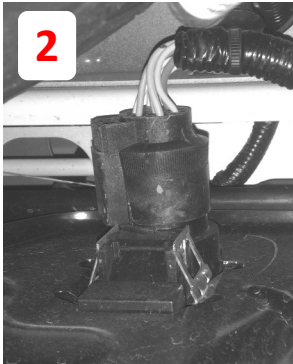
TITLE: _____

SHEET DWG. NO. _____ REV _____
B 6172XR08_A BOLT KIT -00
SCALE 1:8 INCH

1 Park the vehicle on a flat, level surface if possible.

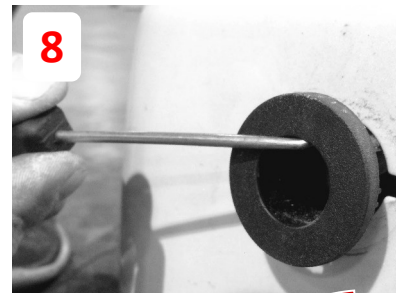
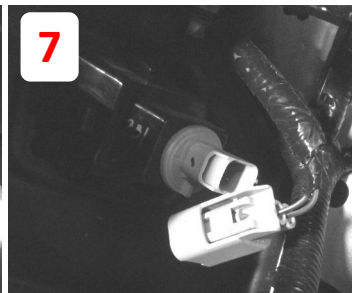
2 Disconnect the trailer plug from the inside of the bumper.

3 Disconnect the bumper harness plug, located above the spare tire. (This one is a little hard to find)



4 Remove the two bolts on either side of the receiver hitch.

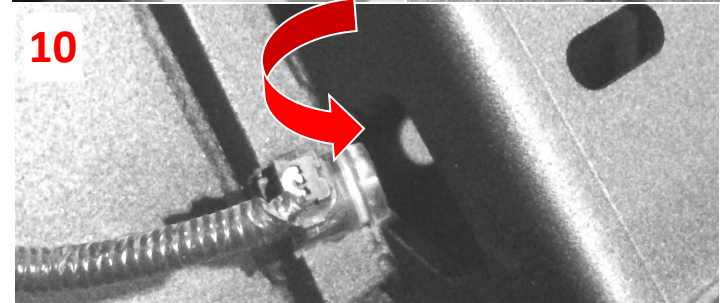
5 Remove the two nuts as indicated on both the driver and passenger sides from the inside of the bumper brackets.



6 Free up the wiring harness by removing all of the clips.

7 Disconnect the wiring harness from the license plate lights and remove the lights.

8 Use a right angled pick tool to carefully pry the sensor grommet from the stock bumper.



- 1** Install 1/2" bolt tabs into bumper and secure with 1/2" retainer nut.
- 2** Install aftermarket lighting , hitch plug, factory license plate lights, and sensor (if equipped)
- 3** Center 1/2" bolt tabs in slots on bumper.
- 4** Install bumper onto truck and secure with 1/2" hardware. Tighten enough where the bumper is able to move but not freely.
- 5** Adjust up/down alignment of bumper then tighten bumper to Frame.
- 6** Reconnect wiring harness from bumper to truck and secure loose wiring.

Note Block off Plate for Lights Sold Seperate

