



1-800-366-9712

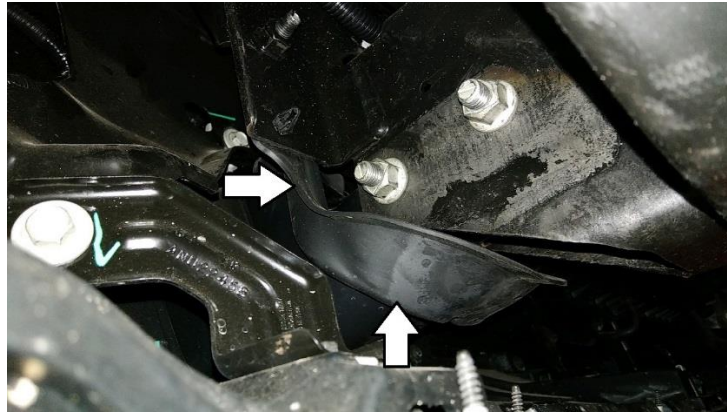
INSTALLATION INSTRUCTIONS

IMPORTANT NOTICE: Be sure to inspect and test fit product before having it coated or painted. Ranch Hand will not be responsible for the cost of the coating if any problems with fit or finish are not noted and addressed beforehand.

**2020-up GMC 2500HD/3500HD GRILL GUARDS
PART #s GGG201BL1 / GGG201BL1C**

***** FOR VEHICLES WITH SENSORS, YOU WILL NEED TO USE PSG19HBL1 *****

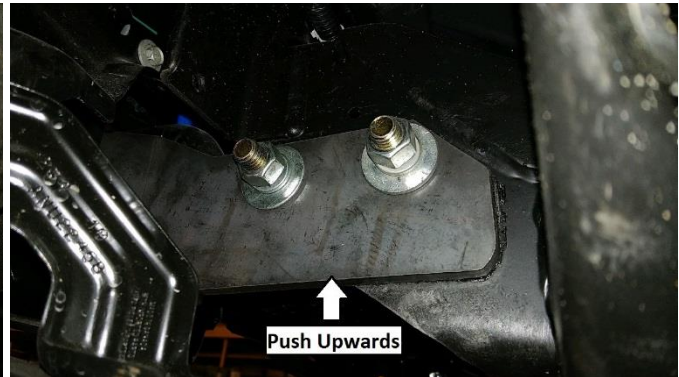
1. Remove/cut off the rubber boot that surrounds the tow hook.



2. Trim/cut out the outside plastic by the tow hooks.



3. Remove the tow hook bolts and install the 1/2" x 5" bolts. Mount the bottom bracket to the outside of the frame. Push the bracket upwards and tighten bolts and nuts.



----- **WARNING** -----

Special care should be exercised in the handling, storage and installation of Ranch Hand equipment. The actual weight of each piece of equipment will vary depending on style and model. The weight of the equipment is sufficient in volume to warrant special care, assistance and in some instances, the use of mechanical equipment during the transfer and installation of the equipment. Do not assume a position directly under the equipment during installation. Be sure the equipment has been connected and stabilized during installation to prevent falling or shifting of positions. Periodically check tightness of bolts to make sure they are tight, and unlikely to fail.
Rev. 2021

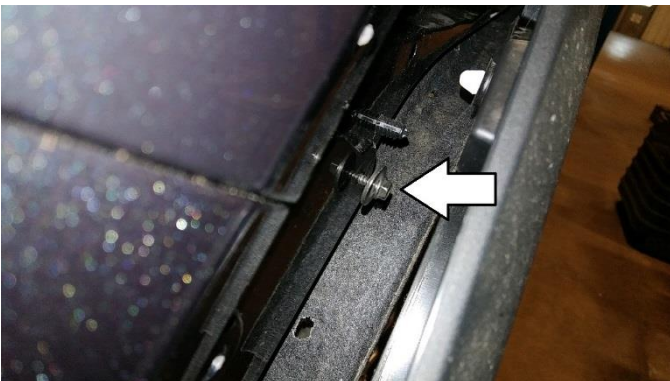
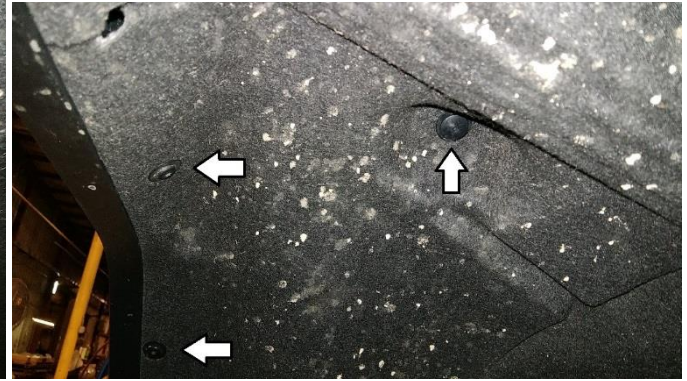


1-800-366-9712

INSTALLATION INSTRUCTIONS

IMPORTANT NOTICE: Be sure to inspect and test fit product before having it coated or painted. Ranch Hand will not be responsible for the cost of the coating if any problems with fit or finish are not noted and addressed beforehand.

- To install the top brackets, you will need to remove the factory grille. You will need to remove the side panels first. Start by removing the inner fender well screws. This will allow to get to the back side of the plastic clips. There will also be a small screw in the corner that need to be removed before the side panel can be pulled off.



- Remove the factory grille. Open the hood and remove the hood release latch by removing two T15 screws. Remove the nine plastic clips holding the plastic shield located above the grille.



- If vehicle is installed with a front camera, unhook the connector. The grille can then be removed by remove four 10mm bolts on top.

WARNING

Special care should be exercised in the handling, storage and installation of Ranch Hand equipment. The actual weight of each piece of equipment will vary depending on style and model. The weight of the equipment is sufficient in volume to warrant special care, assistance and in some instances, the use of mechanical equipment during the transfer and installation of the equipment. Do not assume a position directly under the equipment during installation. Be sure the equipment has been connected and stabilized during installation to prevent falling or shifting of positions. Periodically check tightness of bolts to make sure they are tight, and unlikely to fail.
Rev. 2021



1-800-366-9712

INSTALLATION INSTRUCTIONS

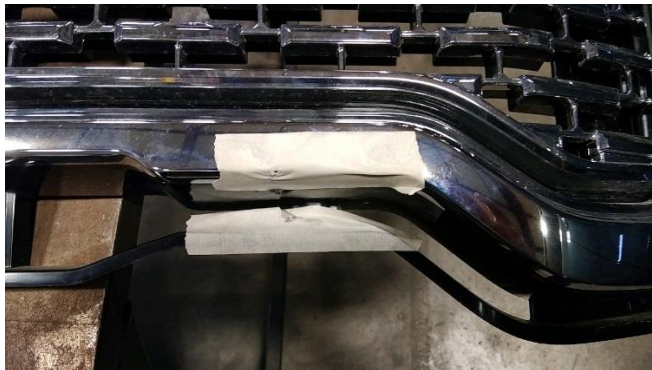
IMPORTANT NOTICE: Be sure to inspect and test fit product before having it coated or painted. Ranch Hand will not be responsible for the cost of the coating if any problems with fit or finish are not noted and addressed beforehand.



7. Mount the top bracket to the 18mm bolts. Hand tighten only. Keep the distance between the top bracket under 38" so the grill guard can be installed.



8. Mount the grill guard to the bottom brackets using the black carriage bolts. Set the grill guard to your liking then tighten bolts. Then mount top brackets to the upright of the grill guard and tighten carriage bolts plus the 18mm factory bolt.
9. Before reinstalling the grille, tape the grille in the area where the top brackets are located, or you can tape the top bracket. This will help with rubbing. Reinstall the grille and reconnect camera plug.



10. Reinstall plastic shield and hood release latch.
11. Reinstall the plastic side panel, fender flare and inner fender well.
12. MAKE SURE ALL NUTS AND BOLTS ARE TIGHT!

WARNING

Special care should be exercised in the handling, storage and installation of Ranch Hand equipment. The actual weight of each piece of equipment will vary depending on style and model. The weight of the equipment is sufficient in volume to warrant special care, assistance and in some instances, the use of mechanical equipment during the transfer and installation of the equipment. Do not assume a position directly under the equipment during installation. Be sure the equipment has been connected and stabilized during installation to prevent falling or shifting of positions. Periodically check tightness of bolts to make sure they are tight, and unlikely to fail.
Rev. 2021