



INSTALLATION INSTRUCTIONS

ASCENT FRONT BUMPER KIT

Part Number: 103638

Application: 2019 Dodge Ram 1500

GENERAL SAFETY PRECAUTIONS

Your safety, and the safety of others, is very important. To help you make informed decisions about safety, we have provided installation and operating instructions and other information on labels and in this guide. This information alerts you to potential hazards that could hurt you or others. It is not possible to warn you about all potential hazards associated with this product, you must use your own good judgment.

CARELESS INSTALLATION AND OPERATION CAN RESULT IN SERIOUS INJURY OR EQUIPMENT DAMAGE. READ AND UNDERSTAND ALL SAFETY PRECAUTIONS AND OPERATING INSTRUCTIONS BEFORE INSTALLING AND OPERATING THIS PRODUCT.

This guide identifies potential hazards and has important safety messages that help you and others avoid personal injury or death. WARNING and CAUTION are signal words that identify the level of hazard. These signal words mean:

▲WARNING signals a hazard that could cause serious injury or death, if you do not follow recommendations. **▲CAUTION** signals a hazard that may cause minor to moderate injury, if you do not follow recommendations.

This guide uses **NOTICE** to call attention to important mechanical information, and Note: to emphasize general information worthy of special attention.

▲ WARNING

IMPACT AND MOVING PARTS ENTANGLEMENT HAZARD

Failure to observe these instructions could lead to severe injury or death

- **Always** Know Your Winch. Take time to fully read the Instructions and/or Operations Guide, and/or Basic Guide to Winching Techniques, in order to understand your winch and its operations.
- **Never** work under vehicle before properly securing vehicle.
- **Always** use appropriate and adequate care in lifting components into place.
- **Never** work under vehicle before properly securing vehicle.
- **Always** use appropriate and adequate care in lifting components into place.
- **Never** use a jack to support the vehicle.
- **Always** use jack stands in pairs to support the vehicle.
- **Always** use jacks or jack stands only on a hard, stable, and level surface.
- **Never** exceed the rated capacity of a jack or jack stands.
- **Always** verify that the parking brake is set, the transmission is in park (automatic) or reverse (manual) and the rear wheels are blocked before working on vehicle.
- **Never** work under vehicle before properly securing vehicle.
- **Always** use appropriate and adequate care in lifting components into place.
- **Always** insure components will remain secure during installation and operation.
- **Always** tighten all nuts and bolts securely, per the installation and operation.
- **Always** perform regular inspections and maintenance on the winch, winch mount and related hardware.
- **Always** replace all worn or damaged parts before operating.
- **Never** operate this WARN product with damaged or missing parts.
- **Always** use extreme caution when drilling on any vehicle. Make sure that all fuel lines, brake lines, electrical wires, and other objects are not punctured or damaged when / if drilling on the vehicle. Thoroughly inspect the area to be drilled (on both sides of material) prior to drilling, and relocate any objects that may be damaged. Failure to inspect the area to be drilled may result in vehicle damage, electrical shock, fire or personal injury.
- **Always** use extreme caution when cutting and trimming during fitting.
- **Always** wear safety glasses when installing this kit. A drilling operation will cause flying metal chips. Flying chips can cause eye injury.
- **Always** remove jewelry and wear eye protection.
- **Never** lean over battery while making connections.
- **Never** route electrical cables across any sharp edge, through or near moving parts, near parts that become hot.

Read installation and operating instructions thoroughly.

WARN INDUSTRIES, INC. 12900 S.E. Capps Road,
Clackamas, OR USA 97015-8903, 1-503-722-1200, FAX: 1-503-722-3000
Customer Service: 1-800-543-9276
Dealer Locator Service: 1-800-910-1122
International Sales/Customer Service: 1-503-722-3008
International Fax: 1-503-722-3005

⚠ CAUTION

MOVING PARTS ENTANGLEMENT HAZARD

Failure to observe these instructions could lead to minor or moderate injury

- Part edges may be sharp!
- Always use proper posture / lifting technique or get lifting assistance while handling and installing product.

Read installation and operating instructions thoroughly.

NOTICE

EQUIPMENT DAMAGE

- **Never** tow vehicle by attaching a tow bar to the eyelets on the bumper.
- Do not attach tow bars directly to the bumper. Damage to bumper may occur. WARN bumpers are not designed to be used for flat towing. Consult with the manufacturer of your tow bar system for the proper vehicle tow bar brackets..

Read installation and operating instructions thoroughly.

NOTES

BEFORE YOU BEGIN



This product may interfere with driver assist systems such as adaptive cruise control and parking assist systems that have sensors or cameras installed in the bumpers or front grill area. If your vehicle is equipped with any of these systems or features, consult your vehicle owner's manual before installing this product. These systems may need to be disabled as a result of installing this product.

TABLE OF CONTENTS

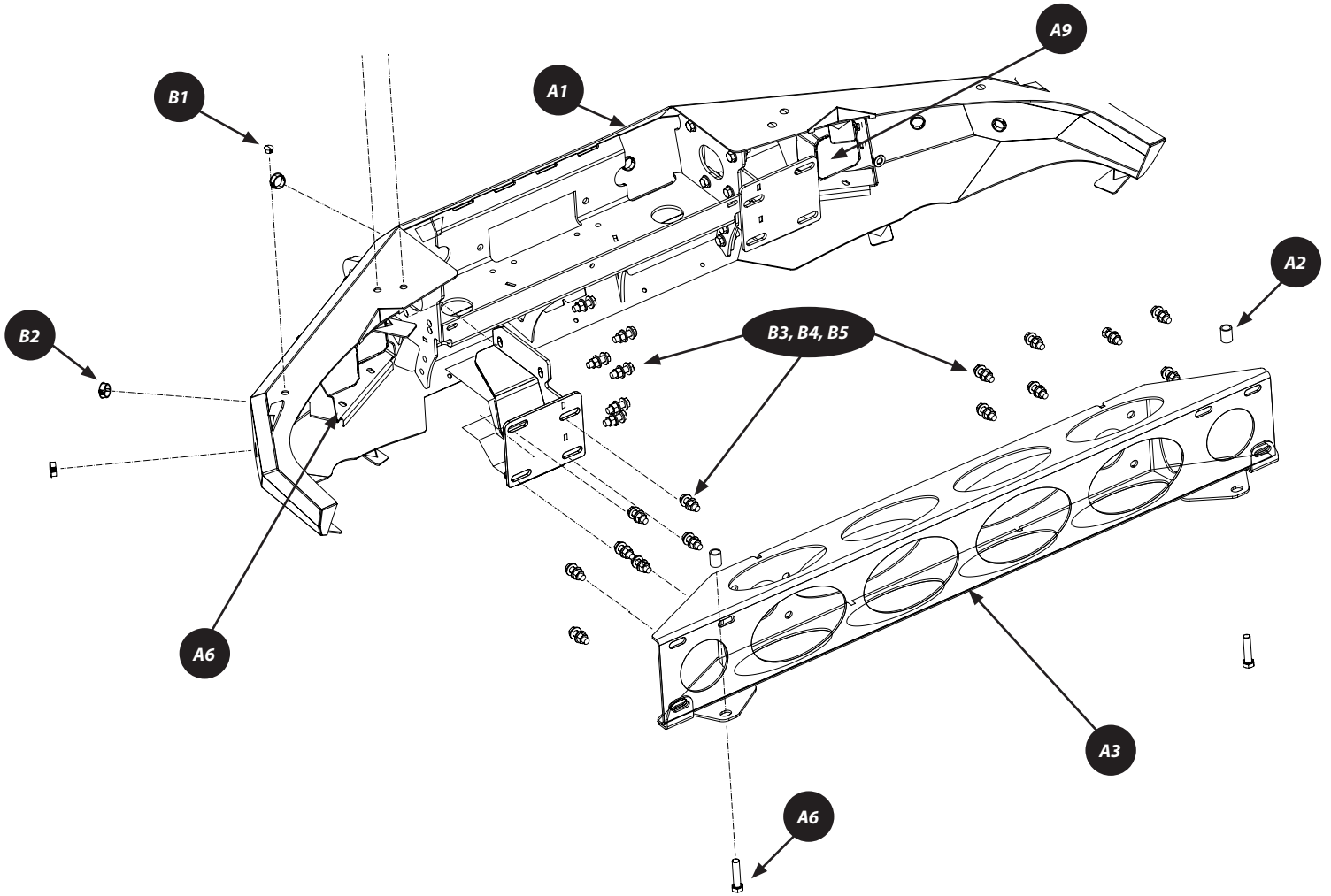
Tools Required.....	page 2
Parts List.....	page 3
Torque Specifications.....	page 3
Installation.....	page 4-9
Maintenance/Care.....	page 9

TOOLS REQUIRED

- Standard Wrench and Socket Set
- Metric Wrench and Socket Set

PARTS LIST

Item	PN	Description	Qty.	Item	PN	Description	Qty.
A1	102453	BUMPER	1	B1	100661	9/16 LOCKING PLUG	6
A2	103691	SPACER	2	B2	102248	1-3/32 PLUG	6
A3	103636	CROSSMEMBER WELDMENT	1	B3	93106	M12 FLAT WASHER	52
A4	95648	RH MOUNTING BRACKET	1	B4	70117	M12-1.75-LOCK INSERT	26
A5	95643	LH MOUNTING BRACKET	1	B5	25552	M12-1.75 x 40 HEX HEAD CAPSCREW	26
A6	100903	LH LIGHT BRACKET	1	B6	103640	M14-2.0X60 FLANGE BOLT	2
A7	100904	RH LIGHT BRACKET	1	B7	91541	10-24X1 STAINLESS CAPSCREW (not shown)	20
A8	94889	LH LIGHT PORT	1	B8	96329	PANEL NUT (not shown)	20
A9	94888	RH LIGHT PORT	1				



TORQUE SPECIFICATIONS

Please use the recommended torque specifications when assembling this product unless otherwise specified in the instructions.

FASTENER SIZE	FASTENER TORQUE		FASTENER SIZE	FASTENER TORQUE	
	lb-ft	(N.m)		lb-ft	(N.m)
1/4"	8	(11)	M4	(2)	3
5/16"	17	(23)	M5	(4.5)	6
3/8"	30	(40)	M6	(7.5)	10
7/16"	48	(66)	M8	(18)	25
1/2"	74	(100)	M10	(37)	50
9/16"	106	(144)			
5/8"	148	(200)			
3/4"	269	(364)			

INSTALLATION INSTRUCTIONS

1. Remove fender liner:

Using an 8mm socket, remove the three screws in fender well. Repeat for other side.

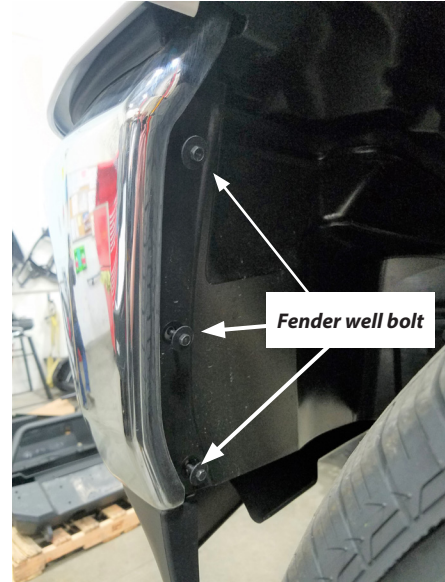


Figure 1

b. Remove the two remaining lower screws to release fender liner. Repeat for other side.

c. Slide fender line down and out.



Figure 2

2. If equipped, unplug the wiring harness located in the front left corner of the bumper.



Figure 3

INSTALLATION INSTRUCTIONS

- Using an 18mm socket, remove the three nuts retaining the stock bumper. Repeat for other side.

CAUTION Always use assistance when moving or lifting heavy parts.

- Carefully remove bumper and set on a clean and stable surface.

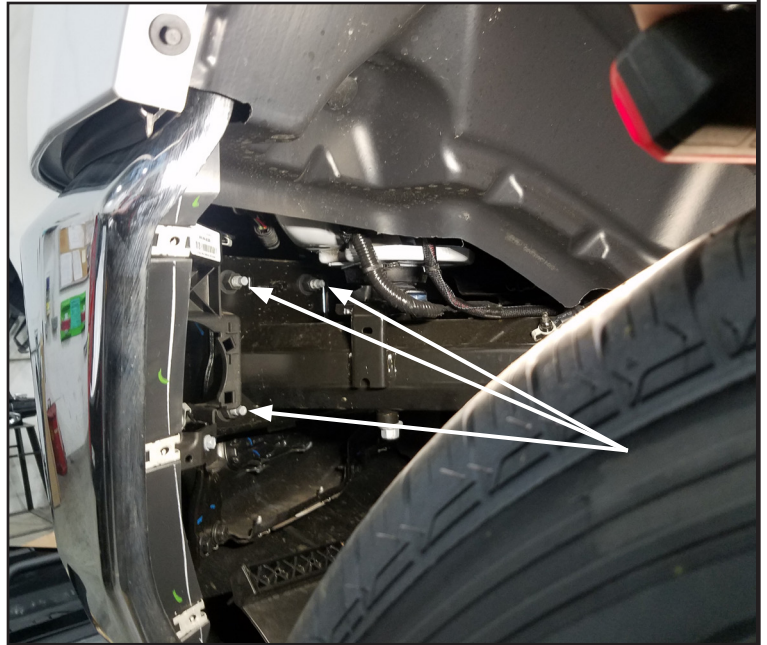


Figure 4

- If equipped, remove the active air dam.
 - Unplug the motor and remove the four retaining nuts with a 12mm socket (see Figure 5 and 6) .
NOTE: The air dam will not be reinstalled with the new bumper.

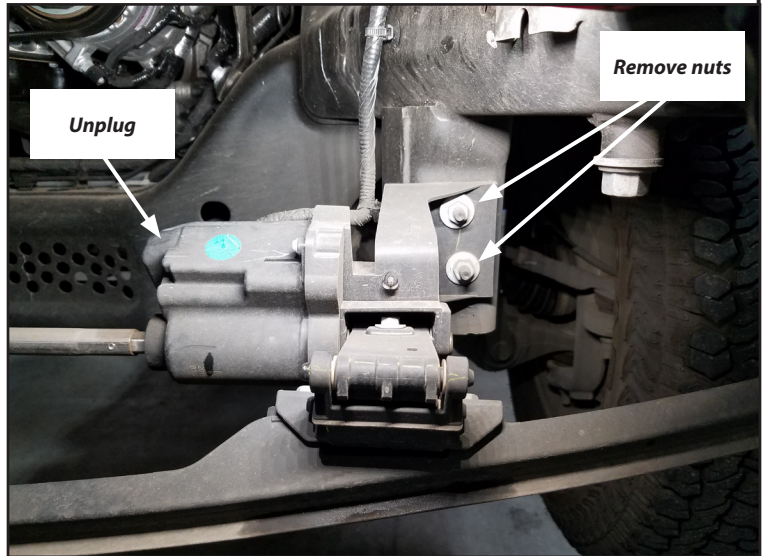


Figure 5

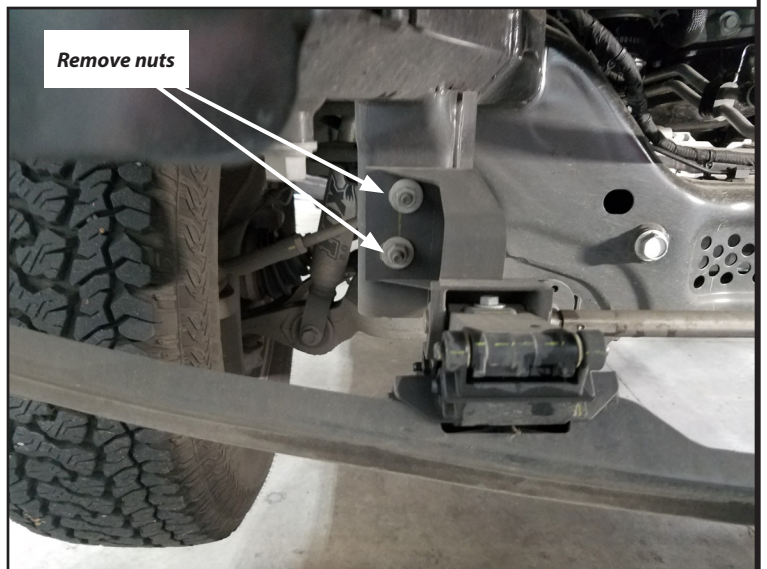


Figure 6

INSTALLATION INSTRUCTIONS

6. Remove sensors from sensor carriages.
 - a. Spread the top and bottom tabs of the sensor carriage outward.
 - b. From the outside of the bumper, push sensor towards the inside of the bumper. **NOTICE** Be sure to mark the location and orientation of each sensor plug.

TIP: Numbering each sensor with tape and marking the top with a paint pen works well.

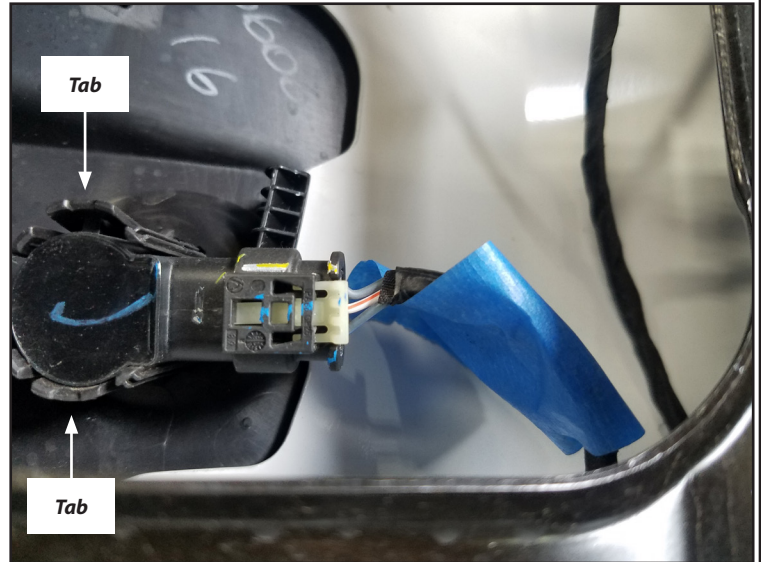


Figure 7

7. Remove the carriages from stock bumper.
 - a. Squeeze in the two tabs on the side of the carriages and push each carriage out the front of the bumper.

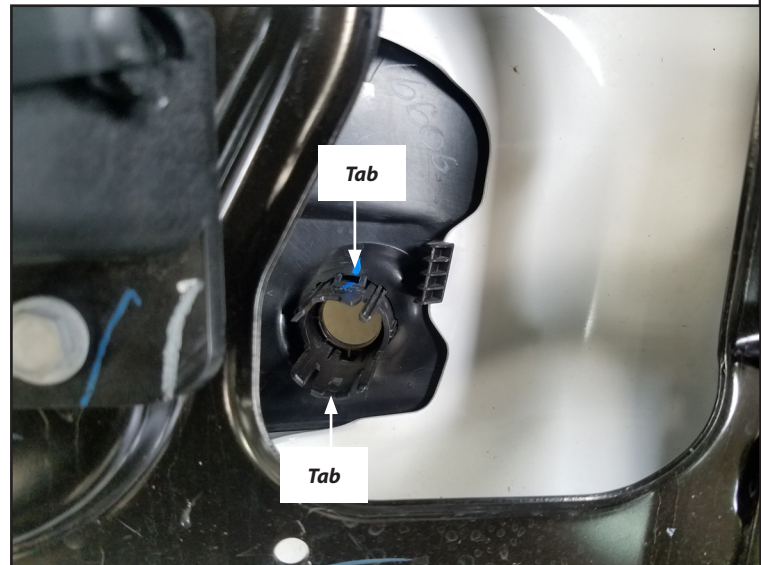


Figure 8

8. Release the plastic clips holding the wire harness in place and remove completely.



Figure 9

9. From the front of the bumper, carefully insert each sensor carriage into the correct mounting hole and snap into place. **NOTE: Be sure sensors match the orientation of the stock bumper.**



Figure 10

INSTALLATION INSTRUCTIONS

10. Route the factory wiring harness to new bumper. **NOTE:** *Be sure that the wiring harness will not interfere with winch operation. It may be necessary to extend portions of the wiring harness.*
11. Install sensors into the correct sensor carriage in the new bumper. **NOTE:** *Be sure sensors match the orientation of the stock bumper.*
12. Secure the front mounting brackets (A4 and A5) to the new bumper by installing six bolts (B5) with six washers (B3) into the mounting hole and secure with six washers (B3) and nuts (B4) and (each bracket). **NOTE:** *Ensure that the bolts are at the top of the slots in the bumper in order to move the brackets as high as possible relative to the bumper.*



Figure 11

13. Line up crossmember (A3) with brackets.
14. Using a 19mm socket and wrench, loosely mount the crossmember to the mounting brackets and bumper by installing 8 bolts (B5) with 8 washers (B3) into the mounting hole and securing with 8 washers (B3) and nuts (B4).

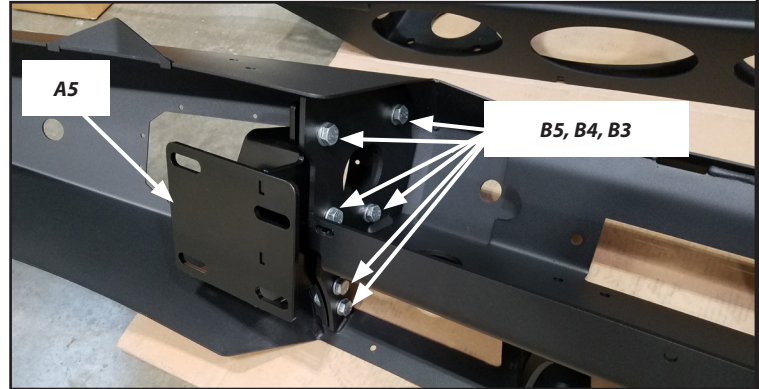


Figure 12

CAUTION Always use assistance when moving or lifting heavy parts.

NOTE: *For the next step we recommend getting assistance from one or two more people.*

15. With assistance, line up the bumper/crossmember assembly to the vehicle bumper mounting holes. **NOTE:** *The tabs on the back of the crossmember should slide over the vehicle frame pad.*
16. Using a 19mm socket and wrench, secure the bumper & crossmember assembly to the vehicle by installing six bolts (B5) with six washers (B3) into the mounting holes and secure with six washers (B3) and nuts (B4) and (each side).
17. Insert one spacer (A2) between the crossmember's corner tab and the vehicle frame (each side).
18. Insert one bolt (B6) up through crossmember's tab, the spacer and the vehicle's mounting hole. Repeat for other side.
19. Tighten **all** bumper hardware now, refer to torque specifications on page 3.

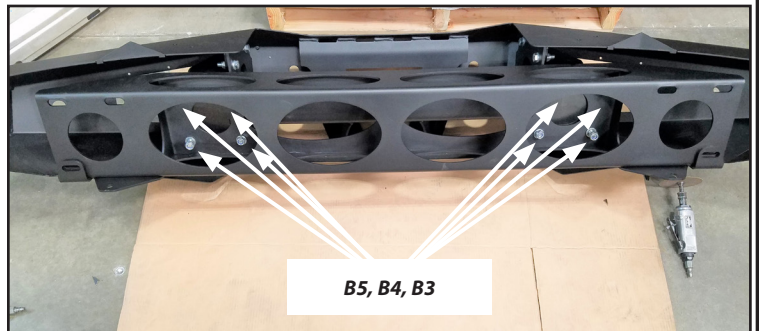


Figure 13

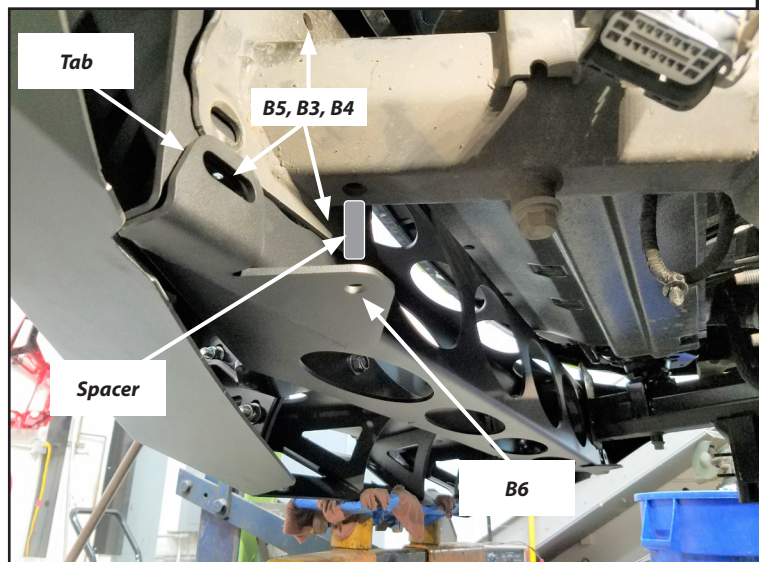


Figure 14

INSTALLATION INSTRUCTIONS

20. Install winch and fairlead per winch installation instructions. Tighten all hardware now.
21. Connect sensor wiring harness. **NOTE: If not installing sensors, plug unused holes with provided hole plugs (B2).** Refer to exploded view on page 3.
22. While holding light bracket (A6 and A7) in place (from under and behind bumper), line up light port (A8 and A9) through front bumper light port to bracket. Secure pieces together with ten stainless steel socket head screws (B7).

NOTE: Light ports are equipped with removable panels for lights. Lights shown installed sold separately.

23. If not installing sensors and ascent bumper accessories, plug unused holes with provided hole plugs (B5 and B4). Refer to exploded view on page 3.
24. The remaining hardware (B1 and B2) are to be used to install license plate to new bumper.
25. Tighten **ALL** hardware now, refer to torque specifications on page 3.
26. If not installing a Baja Bar, insert plugs (B1) into the holes in the top of the bumper.

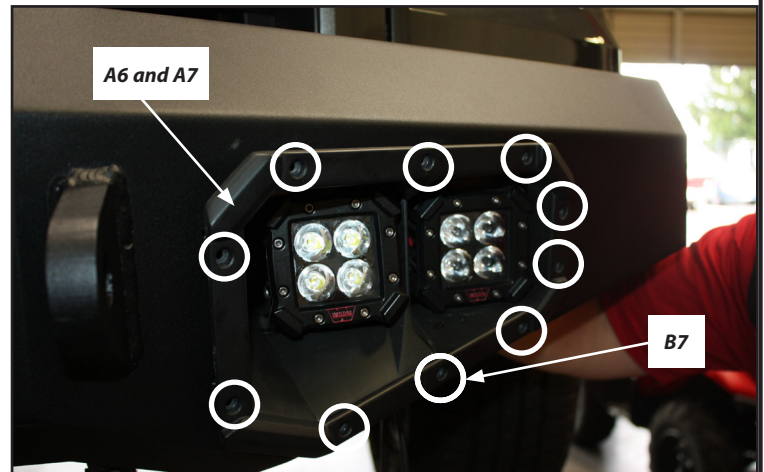


Figure 15



Figure 16

MAINTENANCE / CARE

1. Inspect all parts on the winch, winch mount, and related hardware prior to each use. Replace all hardware that appears rusted or deformed.
2. Inspect all nuts and bolts on the winch, winch mount, and related hardware prior to each use. Tighten all nuts that appear to be loose. Stripped, fractured, or bent bolts or nuts need to be replaced.
3. Check all cables prior to use. Replace cables that look worn or frayed.
4. Check all moving or rotating parts. Remove debris that may inhibit the part from moving freely.

CARELESS INSTALLATION AND OPERATION CAN RESULT IN SERIOUS INJURY OR EQUIPMENT DAMAGE. READ AND UNDERSTAND ALL SAFETY PRECAUTIONS AND OPERATING INSTRUCTIONS BEFORE INSTALLING AND OPERATING THIS PRODUCT.



INSTALLATION INSTRUCTIONS

MAINTENANCE / CARE

1. Inspect all parts on the winch, winch mount, and related hardware prior to each use. Replace all hardware that appears rusted or deformed.
2. Inspect all nuts and bolts on the winch, winch mount,, and related hardware prior to each use. Tighten all nuts that appear to be loose. Stripped, fractured, or bent bolts or nuts need to be replaced.
3. Check all cables prior to use. Replace cables that look worn or frayed.
4. Check all moving or rotating parts. Remove debris that may inhibit the part from moving freely.

CARELESS INSTALLATION AND OPERATION CAN RESULT IN SERIOUS INJURY OR EQUIPMENT DAMAGE. READ AND UNDERSTAND ALL SAFETY PRECAUTIONS AND OPERATING INSTRUCTIONS BEFORE INSTALLING AND OPERATING THIS PRODUCT.

