



INSTALLATION INSTRUCTIONS

Ascent-XP Front Bumper

Part Number: 107288

Application: 2020 Chevrolet HD

GENERAL SAFETY PRECAUTIONS

Your safety, and the safety of others, is very important. To help you make informed decisions about safety, we have provided installation and operating instructions and other information on labels and in this guide. This information alerts you to potential hazards that could hurt you or others. It is not possible to warn you about all potential hazards associated with this product, you must use your own good judgment.

CARELESS INSTALLATION AND OPERATION CAN RESULT IN SERIOUS INJURY OR EQUIPMENT DAMAGE. READ AND UNDERSTAND ALL SAFETY PRECAUTIONS AND OPERATING INSTRUCTIONS BEFORE INSTALLING AND OPERATING THIS PRODUCT.

This guide identifies potential hazards and has important safety messages that help you and others avoid personal injury or death. **WARNING** and **CAUTION** are signal words that identify the level of hazard. These signal words mean:

▲ **WARNING** signals a hazard that could cause serious injury or death if you do not follow recommendations. ▲ **CAUTION** signals a hazard that may cause minor to moderate injury if you do not follow recommendations.

This guide uses **NOTICE** to call attention to important mechanical information and **Note** to emphasize general information worthy of special attention.

▲ WARNING

IMPACT AND MOVING PARTS ENTANGLEMENT HAZARD

Failure to observe these instructions could lead to severe injury or death

- **Always** Know Your Winch. Take time to fully read the Instructions and/or Operations Guide, and/or Basic Guide to Winching Techniques, in order to understand your winch and its operations.
- **Never** work under vehicle before properly securing vehicle.
- **Always** use appropriate and adequate care in lifting components into place.
- **Never** work under vehicle before properly securing vehicle.
- **Always** use appropriate and adequate care in lifting components into place.
- **Never** use a jack to support the vehicle.
- **Always** use jack stands in pairs to support the vehicle.
- **Always** use jacks or jack stands only on a hard, stable, and level surface.
- **Never** exceed the rated capacity of a jack or jack stands.
- **Always** verify that the parking brake is set, the transmission is in park (automatic) or reverse (manual) and the rear wheels are blocked before working on vehicle.
- **Never** work under vehicle before properly securing vehicle.
- **Always** use appropriate and adequate care in lifting components into place.
- **Always** ensure components will remain secure during installation and operation.
- **Always** tighten all nuts and bolts securely, per the installation and operation.
- **Always** perform regular inspections and maintenance on the winch, winch mount and related hardware.
- **Always** replace all worn or damaged parts before operating.
- **Never** operate this WARN product with damaged or missing parts.
- **Always** use extreme caution when drilling on any vehicle. Make sure that all fuel lines, brake lines, electrical wires, and other objects are not punctured or damaged when/if drilling on the vehicle. Thoroughly inspect the area to be drilled (on both sides of material) prior to drilling and relocate any objects that may be damaged. Failure to inspect the area to be drilled may result in vehicle damage, electrical shock, fire, or personal injury.
- **Always** use extreme caution when cutting and trimming during fitting.
- **Always** wear safety glasses when installing this kit. A drilling operation will cause flying metal chips. Flying chips can cause eye injury.
- **Always** remove jewelry and wear eye protection.
- **Never** lean over battery while making connections.
- **Never** route electrical cables across any sharp edge, through or near moving parts, near parts that become hot.

Read installation and operating instructions thoroughly.

WARN INDUSTRIES, INC. 12900 S.E. Capps Road,
Clackamas, OR USA 97015-8903, 1-503-722-1200, FAX: 1-503-722-3000
Customer Service: 1-800-543-9276
Dealer Locator Service: 1-800-910-1122
International Fax: 1-503-722-3005

⚠ CAUTION

MOVING PARTS ENTANGLEMENT HAZARD

Failure to observe these instructions could lead to minor or moderate injury

- Part edges may be sharp!
- Always use proper posture / lifting technique or get lifting assistance while handling and installing product.

Read installation and operating instructions thoroughly.

NOTICE

EQUIPMENT DAMAGE

- **Never** tow vehicle by attaching a tow bar to the eyelets on the bumper.
- Do not attach tow bars directly to the bumper. Damage to bumper may occur. WARN bumpers are not designed to be used for flat towing. Consult with the manufacturer of your tow bar system for the proper vehicle tow bar brackets.

Read installation and operating instructions thoroughly.

BEFORE YOU BEGIN

- **BEFORE YOU BEGIN READ INSTALLATION INSTRUCTION THOROUGHLY.**

NOTICE



This product may interfere with driver assist systems such as adaptive cruise control and parking assist systems that have sensors or cameras installed in the bumpers or front grill area. If your vehicle is equipped with any of these systems or features, consult your vehicle owner's manual before installing this product. These systems may need to be disabled as a result of installing this product.

TABLE OF CONTENTS

Tools Required	page 2
Torque Specifications	page 2
Parts List	page 3
Installation	page 4-14
Maintenance/Care	page 15

TOOLS REQUIRED

- Standard wrenches
- Metric socket set
- Standard socket set
- T10 Star Head socket wrench
- Metric wrenches
- Pliers

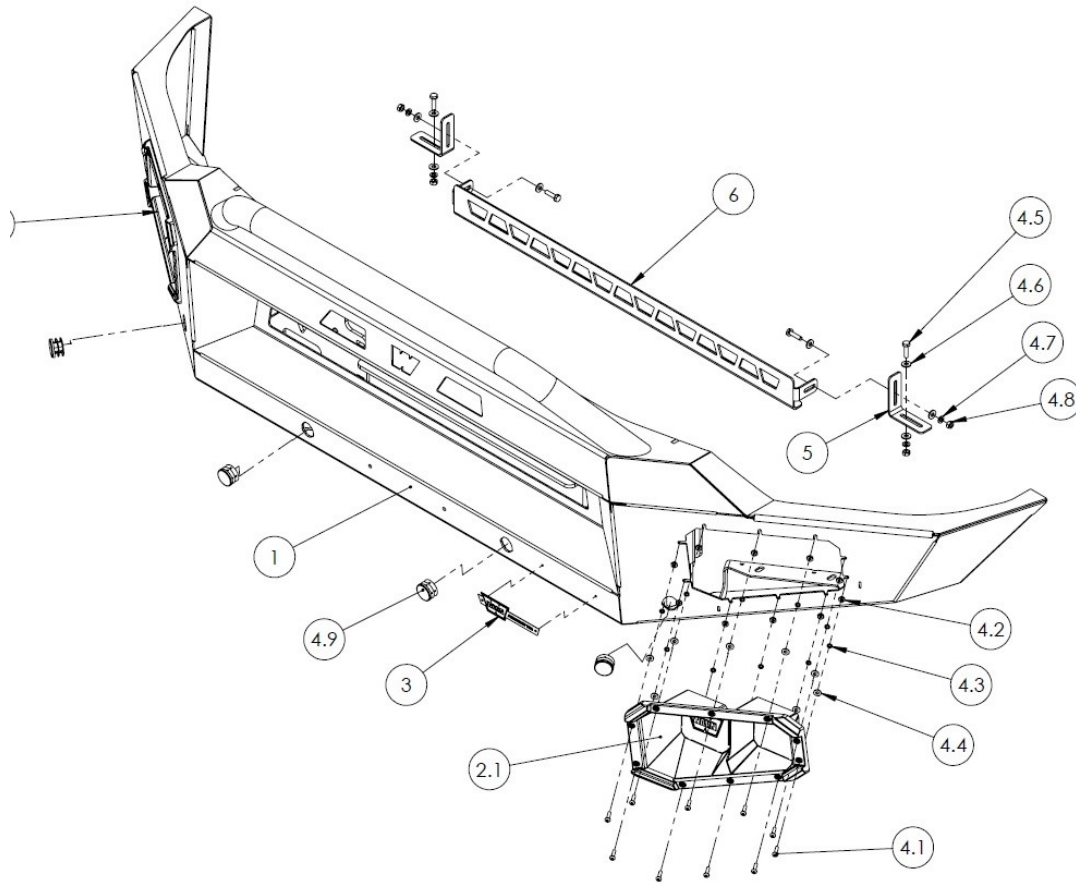
TORQUE SPECIFICATIONS

Please use the recommended torque specifications when assembling this product unless otherwise specified in the instructions.

FASTENER SIZE	FASTENER TORQUE		FASTENER SIZE	FASTENER TORQUE	
	lb-ft	(N.m)		lb-ft	(N.m)
1/4"	8	(11)	M4	(2)	3
5/16"	17	(23)	M5	(4.5)	6
3/8"	30	(40)	M6	(7.5)	10
7/16"	48	(66)	M8	(18)	25
1/2"	74	(100)	M10	(37)	50
9/16"	106	(144)			
5/8"	148	(200)			
3/4"	269	(364)			

PARTS LIST

ITEM	PART NO.	DESCRIPTION	QTY	ITEM	PART NO.	DESCRIPTION	QTY
1	107288	WARN Ascent XP 2020 Chevrolet HD bumper	1				
2.1	94888	Light Insert RH	1				
2.2	94889	Light Insert LH	1				
3	107152	WARN Ascent XP Label	1				
4	50259-HW	107288 WARN HW Kit	1				
4.1	101064	10-24X3/4 Button head bolt <i>(not all shown)</i>	20				
4.2	101065	10-24 Machine screw nut	20				
4.3	101072	#10 Split lock washer	20				
4.4	101067	#10 Flat washer	20				
4.5	101039	1/4"-20 x 1" Hex head bolt	4				
4.6	100975	1/4" Flat washer	8				
4.7	100974	1/4" Lock washer	4				
4.8	100511	1/4"-20 Hex nut	4				
4.9	61776	1-1/4" Plastic Sensor Plug	4				
5	22352	Warn XP L-bracket	2				
6	22353	Warn XP Mesh Insert	1				



INSTALLATION INSTRUCTIONS

1. Use a T10 star head socket wrench to remove the two (2) bolts from both the passenger and driver side wheel wells. (Figure 1)

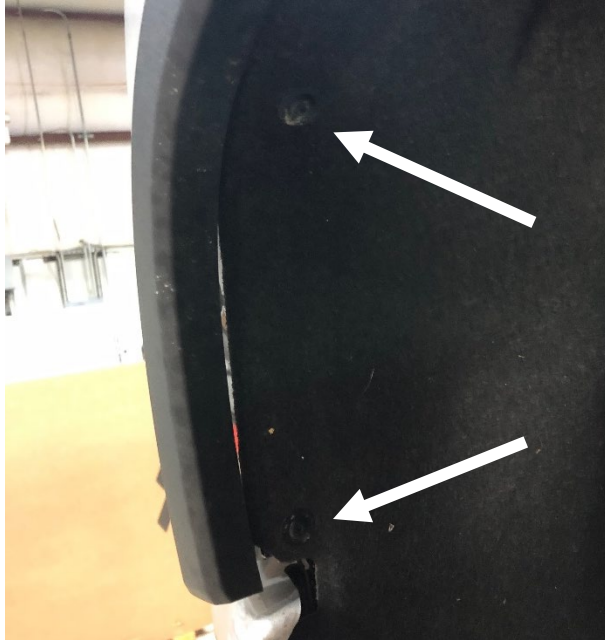


Figure 1.

2. Use a body pry tool to carefully remove the front of the fender flare away from the body. Use a 7mm socket wrench to remove the bolt on the valance. (Figure 2)



Figure 2

INSTALLATION INSTRUCTIONS

3. With the 7mm bolt removed use a body pry tool to remove the valance from the truck. (Figure 3)



Figure 3.

4. Use a 10mm socket wrench to remove the two (2) bolts at the base of the grill. (Figure 4)



Figure 4

INSTALLATION INSTRUCTIONS

5. Use a body pry tool to remove the nine (9) push pins holding the grill cover. (Figure 5)

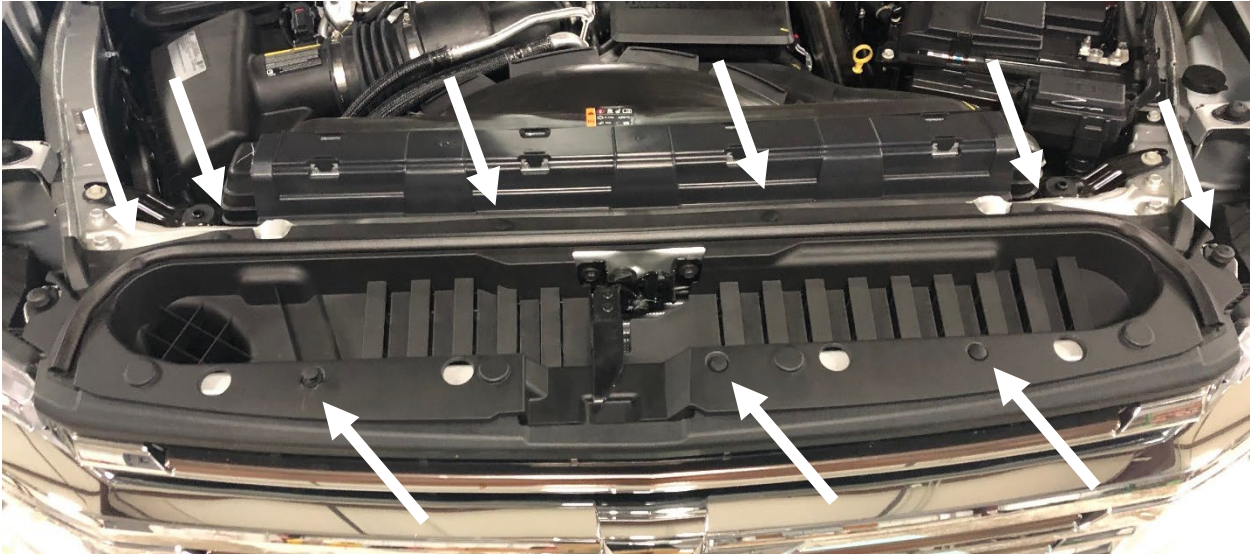


Figure 5

6. Use a T10 socket wrench to remove the two bolts holding the hood latch on. With the hood latch taken off you can remove the grill cover. (Figure 6)



Figure 6.

INSTALLATION INSTRUCTIONS

7. Use a 10mm socket wrench to remove the four (4) bolts on the top of the grill. (Figure 7)

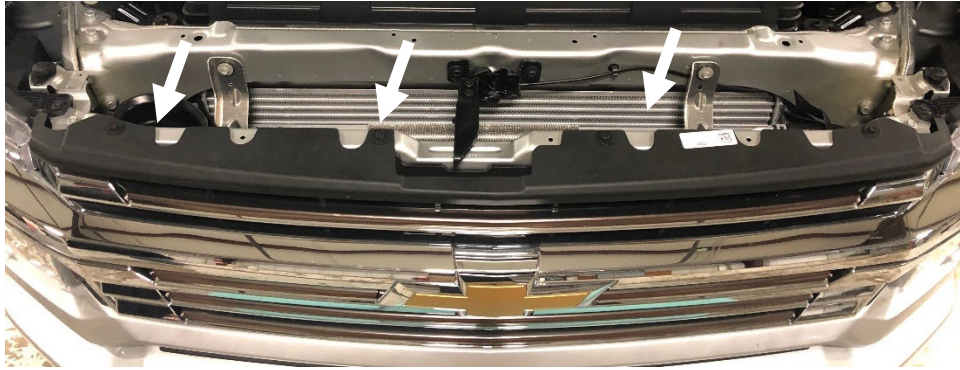


Figure 7

8. With the bolts removed, carefully take the grill off the truck. While taking off the grill, unplug the camera harness on the passenger side of the truck. (Figure 8)



Figure 8.

9. From under the truck: use a 15mm socket wrench to remove the two (2) back bolts on the bumper support bracket on both sides. (Figure 9)

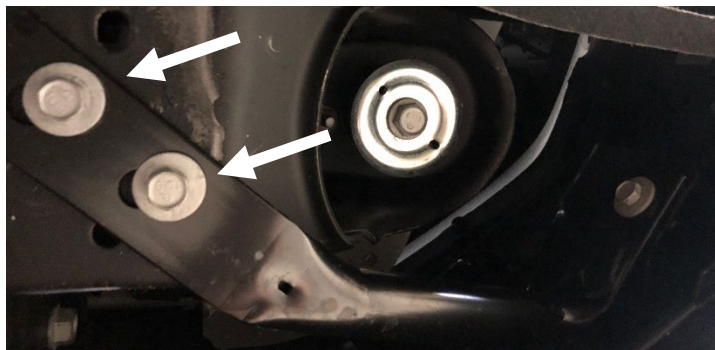


Figure 9

INSTALLATION INSTRUCTIONS

10. With the grill gone you can access the bumper mounting bolts on the top deck. Use a 15mm socket wrench to remove the two (2) bolts one on the top and one on the bottom. The bumper can now be removed from the truck. (Figure 10-11)

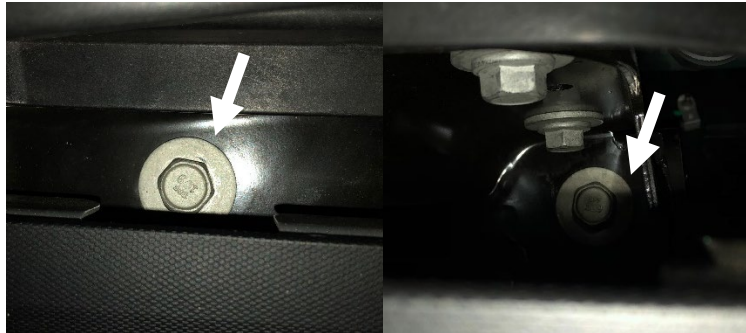


Figure 10

Figure 11

11. As you remove the bumper, unplug the sensor, heater plug, and lower louver harnesses located on the driver side of the truck. (Figure 12)

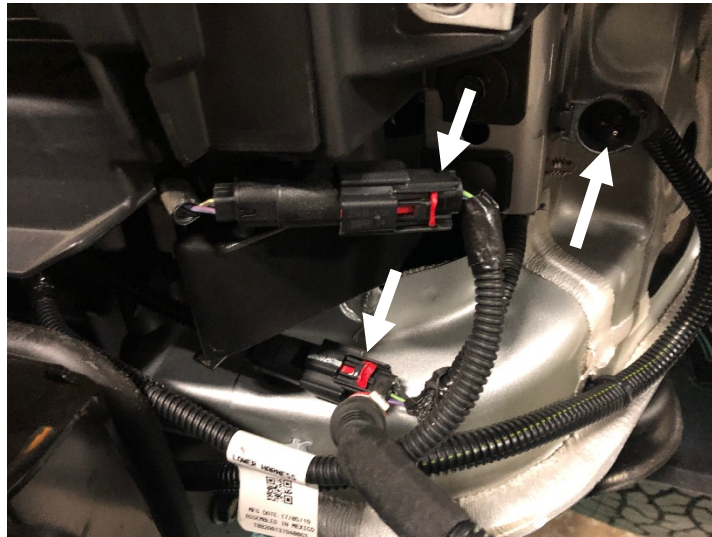


Figure 12

12. If equipped, remove the factory tow hooks by using an 18mm socket wrench to unfasten the two (2) bolts in the frame. (Figure 13)

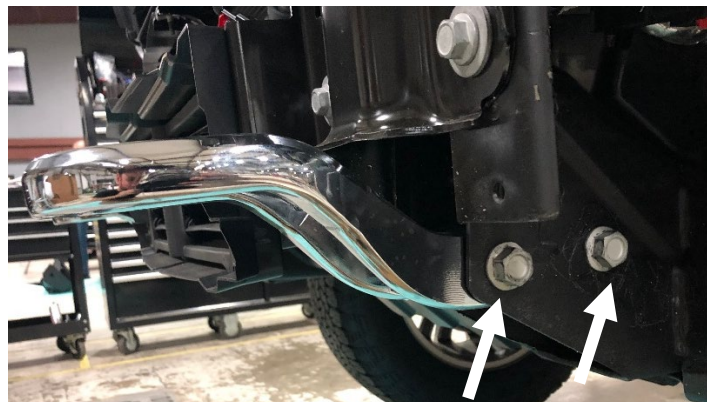


Figure 13

13. Use a 15mm socket wrench to take four (4) bolts holding the mounting plates and lower louvers to the frame horns. (Figure 14)

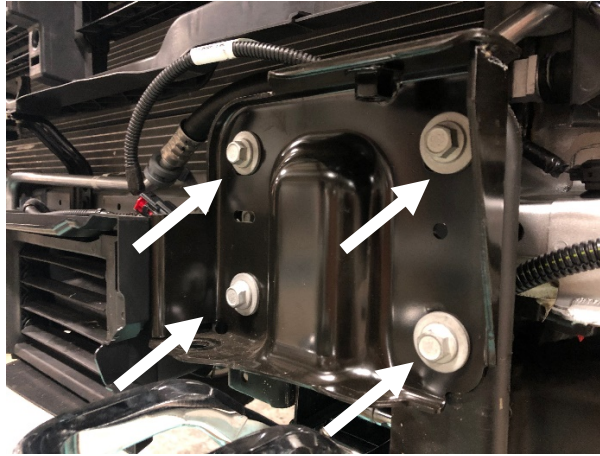


Figure 14

14. Disconnect the lower louvers from the mounting plates by using a 7mm socket wrench to remove the six (6) bolts. Set bolts aside for later use. (Figure 15)



Figure 15

15. Use a pair of pliers to remove the two (2) clip nuts from both mounting plates to use in the bumper install. (Figure 16)

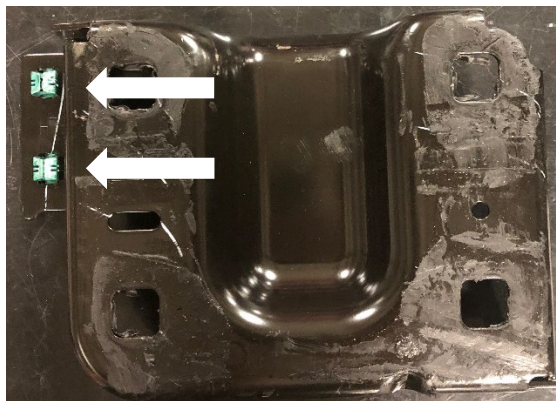


Figure 16

16. With the louvers removed, use a cutting tool to remove the plugs on both sides. (Figure 17)

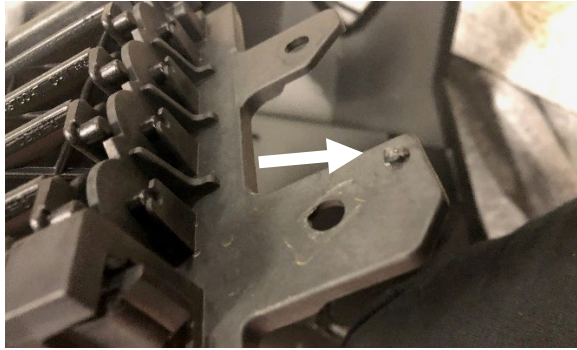


Figure 17

17. If equipped, remove the engine heater plug located on the driver side of the truck bumper. Push the bumper in against the spring and turn counterclockwise, once unclipped pull out from the bumper. (Figure 18)



Figure 18

18. Carefully remove the four sensors and sensor housings from the bumper by spreading the housing clips out and pushing the sensor out simultaneously. Make sure to mark the position of each housing for installing into the WARN bumper. (Figure 19)

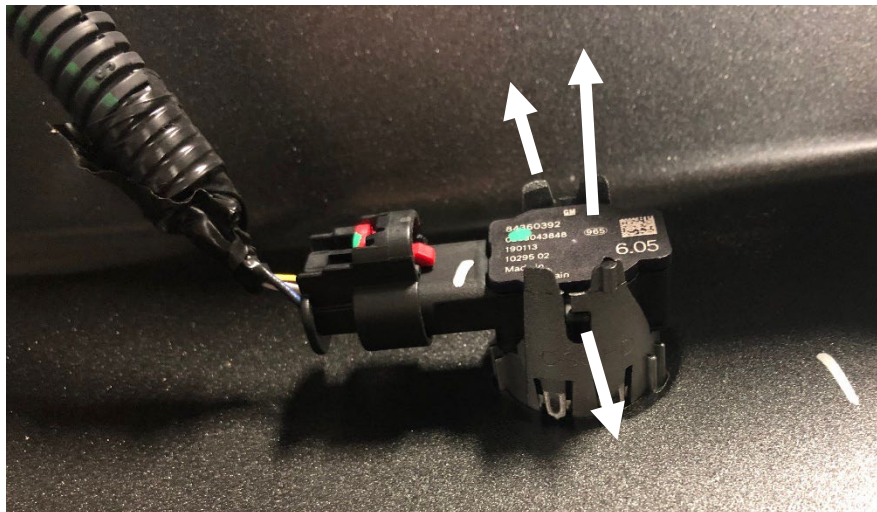


Figure 19

INSTALLATION INSTRUCTIONS

19. Remove the sensor housings from the bumper by pressing the retainer clips in on the sides and pushing the housing out. (Figure 20)

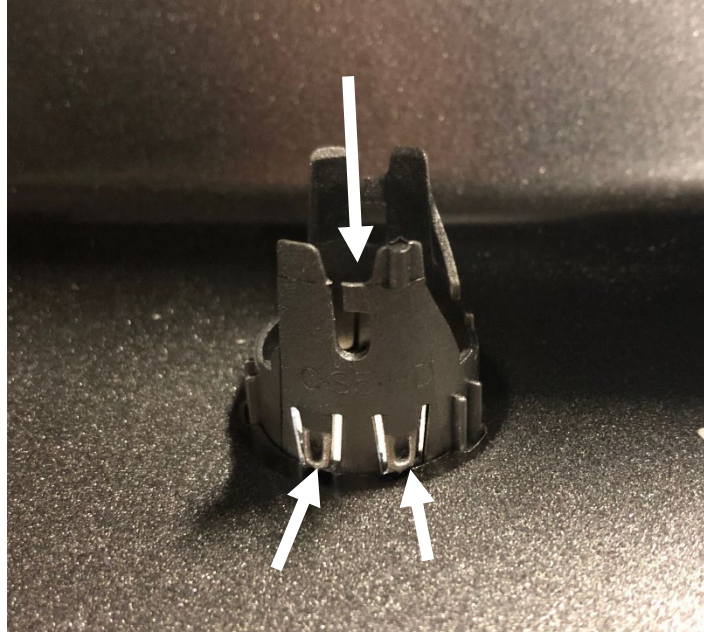


Figure 20

20. Install the two light inserts (94888 and 94889) into the bumper and fasten them with the provided 10-24 stainless steel button head screws, flat/lock washers, and nuts (50259-HW). (Figure 21-22)

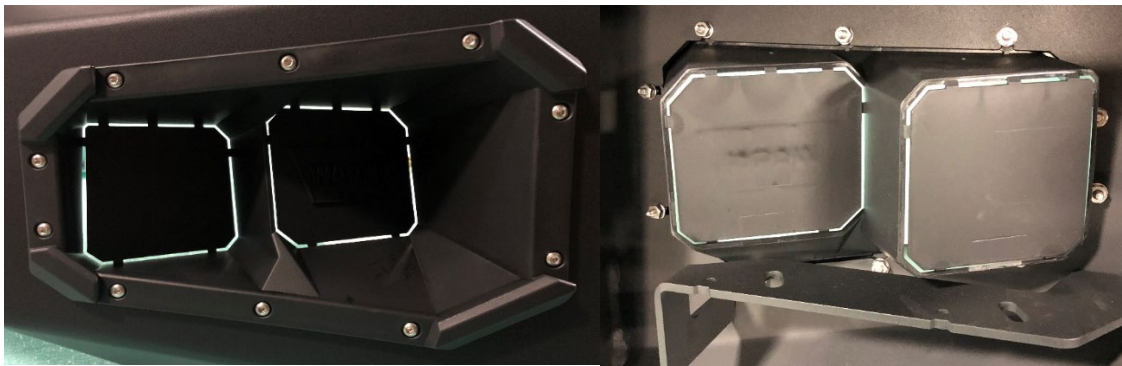


Figure 21-22

INSTALLATION INSTRUCTIONS

21. Use the provided $\frac{1}{4}$ " hex head bolts, flat washers and lock washers to install the two (2) L-brackets (22352) and the mesh (22353) (50259-HW). (Figure 23)

Note: Center the mesh in the opening before tightening the $\frac{1}{4}$ " hardware. If installing a 30" light bar, replace the mesh with the light bar and use the lightbar hardware to attach it to the provided L-brackets (22352).



Figure 23

22. Install the sensor housings into their respective locations and install the sensors by running the harness behind the frame mounts and over the 30" light bar housing. Apply the provided epoxy (61632) around the housing to keep them in place. (Figure 24)



Figure 24

INSTALLATION INSTRUCTIONS

23. Install the lower louvers onto the Warn bumper using the OEM bolts and clip nuts removed during steps 14-15 with a 7mm socket wrench. (Figure 25)

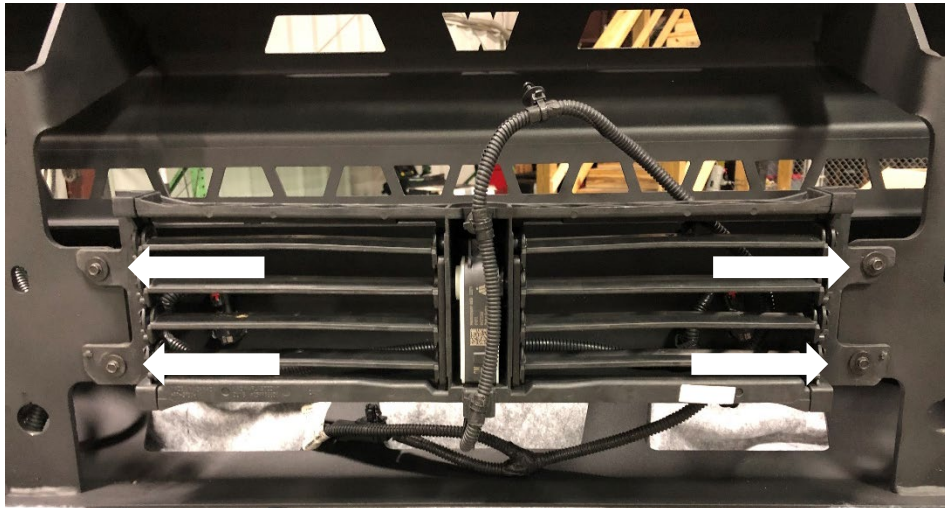


Figure 25

24. Reinstall the heater plug on the driver side mounting plate by reversing the steps used to take it off. (Figure 26)



Figure 26

25. With assistance, hold the Warn bumper up to the frame horns and attach it using the eight (8) OEM bolts from step 13 and a 15mm socket wrench. (Figure 27)

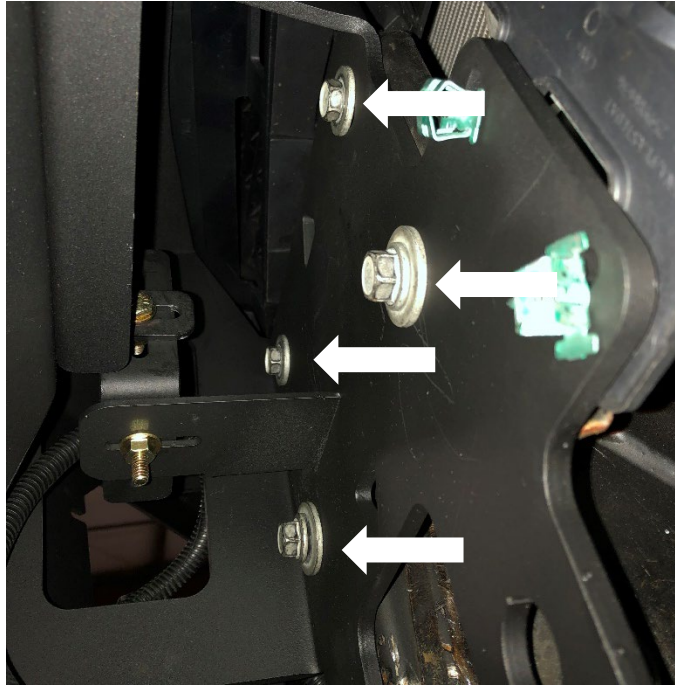


Figure 27

26. Plug in all harnesses and reinstall the valiance, grill, and grill cover by reversing steps 8-1.

INSTALLATION INSTRUCTIONS

MAINTENANCE / CARE

1. Inspect all parts on the winch, winch mount, and related hardware prior to each use. Replace all hardware that appears rusted or deformed.
2. Inspect all nuts and bolts on the winch, winch mount, and related hardware prior to each use. Tighten all nuts that appear to be loose. Stripped, fractured, or bent bolts or nuts need to be replaced.
3. Check all cables prior to use. Replace cables that look worn or frayed.
4. Check all moving or rotating parts. Remove debris that may inhibit the part from moving freely.

CARELESS INSTALLATION AND OPERATION CAN RESULT IN SERIOUS INJURY OR EQUIPMENT DAMAGE. READ AND UNDERSTAND ALL SAFETY PRECAUTIONS AND OPERATING INSTRUCTIONS BEFORE INSTALLING AND OPERATING THIS PRODUCT.

