

# 1994-2002 DODGE 1500-3500

## FRONT BUMPER INSTALLATION INSTRUCTIONS



## SAFETY

**Know safety, no injury. Know injury, no safety. ~Author Unknown**

- **READ ALL SAFETY INSTRUCTIONS BEFORE INSTALLATION**
  - FOLLOW ALL INSTRUCTIONS FOR PROPER ASSEMBLY
  - WEAR APPROPRIATE EYE PROTECTION
  - EXERCISE CARE WHEN LIFTING COMPONENTS
  - USE APPROPRIATE TORQUE FOR BOLTS
  - BLUE THREAD LOCKING COMPOUND IS RECOMMENDED ON ALL BOLT
- SUGGESTED TORQUE VALUES FOR STEEL GRADE SAE 5 BOLT

BOLT DIAMETER (INCH)	TREADS PER INCH	TORQUE (POUND-FEET)
1/4	20	7
5/16	18	14
3/8	16	25
7/16	14	40
1/2	13	60
9/16	12	88
5/8	11	120
3/4	10	200
7/8	9	302
1	8	466



94-02 DODGE 1500-3500 FRONT

## I. PARTS LIST

<u>QUANTITY</u>	<u>PART NUMBER</u>	<u>DESCRIPTION</u>
1	600-56-0070	1994-2002 DODGE ALL X SERIES
1	60P-56-0748	PAINTED PASS FRAME MOUNT WELDMENT
1	60P-56-0747	PAINTED DRIVER FRAME MOUNT WELDMENT
1	60K-56-0001	HARDWARE PACKAGE #1
2	601-56-9999	BETA ORL MOUNT
1	60K-56-0003	HARDWARE PACKAGE # 3

## II. TOOL LIST

1. 18MM SOCKET
2. ¾" WRENCH
3. ¾: SOCKET



94-02 DODGE 1500-3500 FRONT

### **III. REMOVAL OF OEM BUMPER**

1. Using an 18mm socket remove single bolt from bracket to frame of vehicle.(both sides)see figures 1 and 2.



FIGURE 1



## 94-02 DODGE 1500-3500 FRONT



FIGURE 2

2. Using an 18mm wrench remove single nut from bracket to bumper (both sides). See figure 3

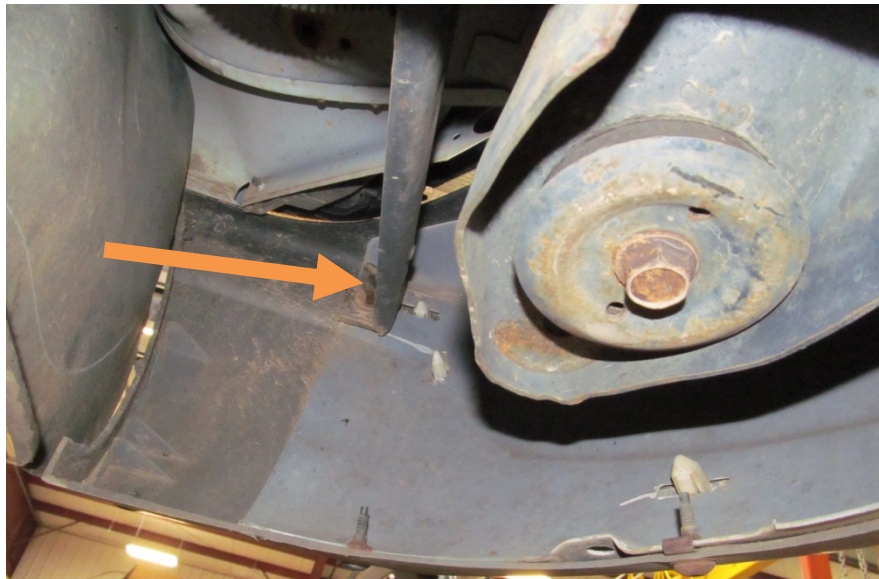


FIGURE 3



## 94-02 DODGE 1500-3500 FRONT

3. Remove bracket from vehicle (both sides). See figure 4



FIGURE 4

4. Using 18mm socket remove three bolts securing frame to bumper (both sides) (extension and universal joint may be needed) see figures 5 and 6.



FIGURE 5





## 94-02 DODGE 1500-3500 FRONT



FIGURE 6

5. Carefully remove OEM bumper from vehicle.



94-02 DODGE 1500-3500 FRONT

### III. INSTALLATION

1. Align frame mounts to INSIDE of frame. See figures 7, 8, and 9.



FIGURE 7: FRONT VIEW OF DRIVER SIDE FRAME MOUNT



## 94-02 DODGE 1500-3500 FRONT



FIGURE 8: OUTSIDE VIEW OF FRAME MOUNTS



FIGURE 9: INSIDE VIEW OF FRAME MOUNTS





## 94-02 DODGE 1500-3500 FRONT

2. Using three bolts from hardware kit 1 and a  $\frac{3}{4}$ " socket/wrench secure frame mounts to frame. (both sides)
3. Align bumper to frame mounts until desired position is obtained.
4. Using two bolts from hardware kits and a  $\frac{3}{4}$ " socket/wrench secure bumper to frame mounts (both sides)

**CONGRATULATIONS!!**

