

# 2014-2015 GMC 1500

## FRONT BUMPER INSTALLATION INSTRUCTIONS



## SAFETY

**Know safety, no injury. Know injury, no safety. ~Author Unknown**

- **READ ALL SAFETY INSTRUCTIONS BEFORE INSTALLATION**
  - FOLLOW ALL INSTRUCTIONS FOR PROPER ASSEMBLY
  - WEAR APPROPRIATE EYE PROTECTION
  - EXERCISE CARE WHEN LIFTING COMPONENTS
  - USE APPROPRIATE TORQUE FOR BOLTS
  - BLUE THREAD LOCKING COMPOUND IS RECOMMENDED ON ALL BOLTS
- SUGGESTED TORQUE VALUES FOR STEEL GRADE SAE 5 BOLTS

BOLT DIAMETER (INCH)	TREADS PER INCH	TORQUE (POUND-FEET)
1/4	20	7
5/16	18	14
3/8	16	25
7/16	14	40
1/2	13	60
9/16	12	88
5/8	11	120
3/4	10	200
7/8	9	302
1	8	466



## 2014-2016 GMC 1500 FRONT

### I. PARTS LIST

<u>QUANTITY</u>	<u>PART NUMBER</u>	<u>DESCRIPTION</u>
1	600-56-0216, 0218, 0220	FRONT BUMPER
1	60P-56-2104	PAINTED PASS FRAME MOUNT
1	60P-56-2105	PAINTED DRIVER FRAME MOUNT
1	60P-56-2106	PAINTED PASS LOWER MOUNT
1	60P-56-2107	PAINTED DRIVER LOWER MOUNT
1	60K-56-0001	HARDWARE PACKAGE #1
1	318-12-0005	PARK ASSIST SENSOR GROMMET (IF APPLICABLE)

### II. TOOL LIST

1. 15mm socket
2. 18mm socket
3. 15mm wrench
4. 18mm wrench
5. T15 Torx bit
6. 7mm socket
7. Flathead screwdriver



### 2014-2016 GMC 1500 FRONT REMOVAL OF OEM BUMPER

#### III.

1. Remove two screws on bottom of OEM fender flare with T15 Torx bit. (both sides)



2. Gently pull away from truck on OEM fender flare as shown. (both sides)





## 2014-2016 GMC 1500 FRONT



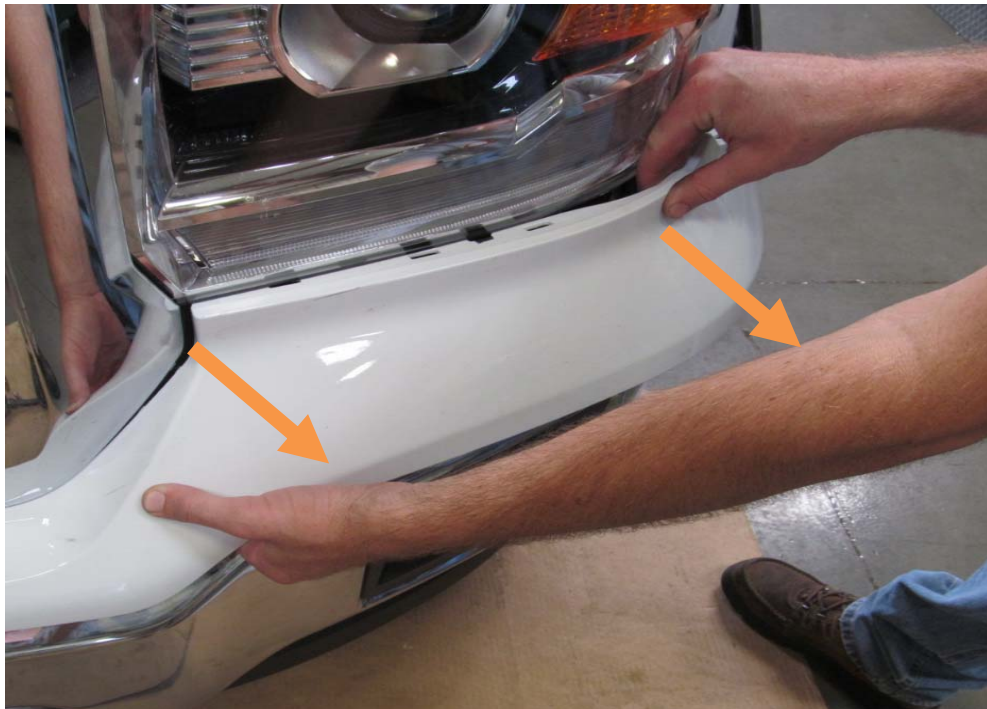
3. Remove screw holding on plastic trim piece with 7mm socket.  
(both sides)





## 2014-2016 GMC 1500 FRONT

4. Pull out on edge of plastic trim to release the tabs as shown. Pull in direction of arrows. (both sides)

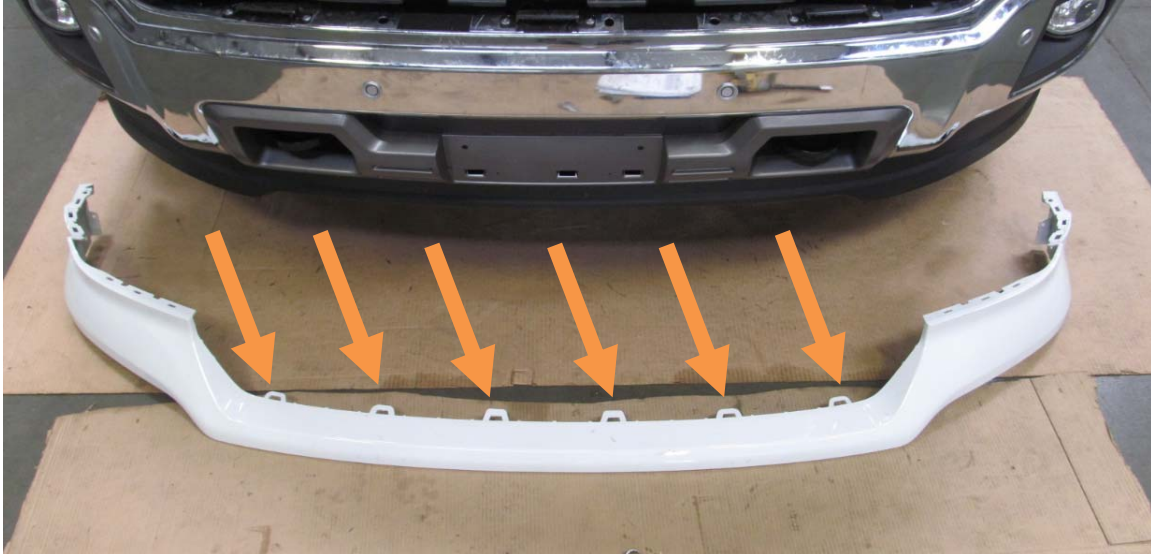




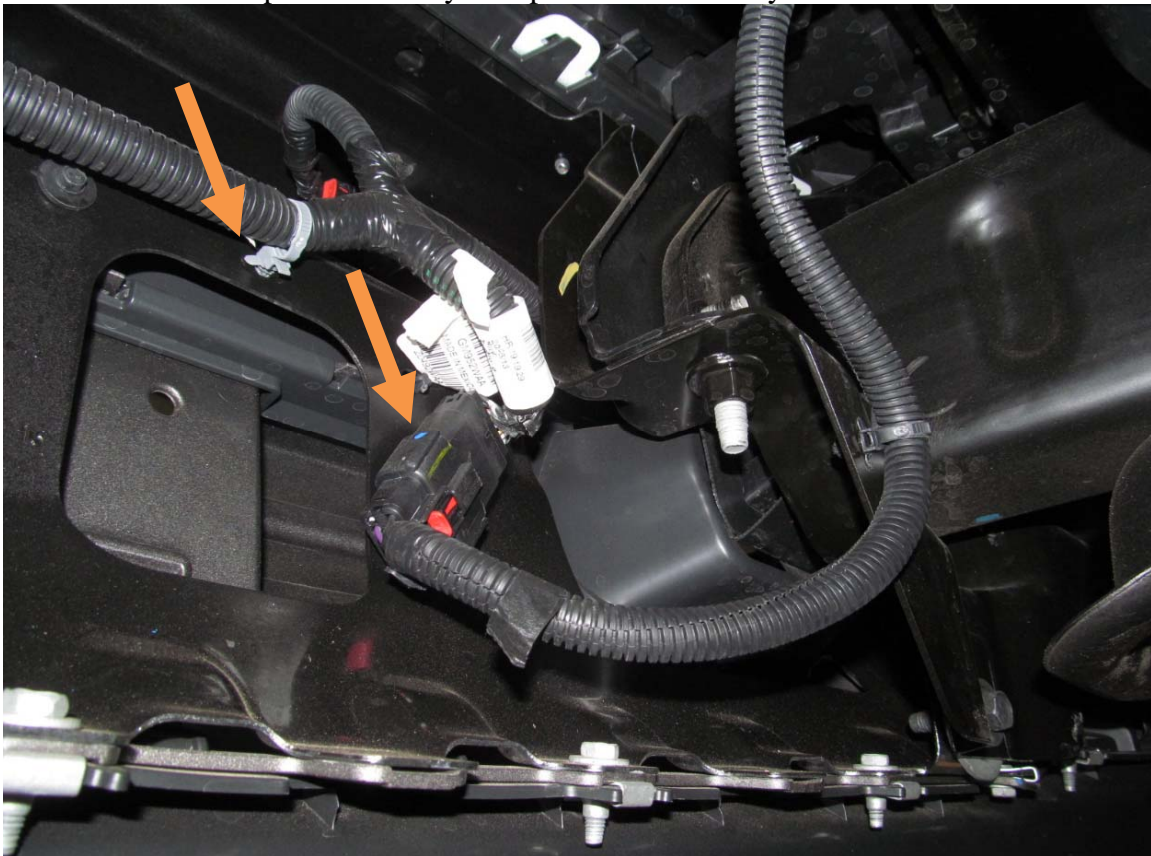


## 2014-2016 GMC 1500 FRONT

5. Release six tabs on center of plastic trim below the grill. Have a friend gently pull out on the plastic trim as you release the tabs behind the grill. A flathead screwdriver works well to help pry the tabs. Gently set aside plastic trim; it will be reused.



6. Unplug the OEM fog light and sensor wiring harness and place it on top of the factory skid plate out of the way.



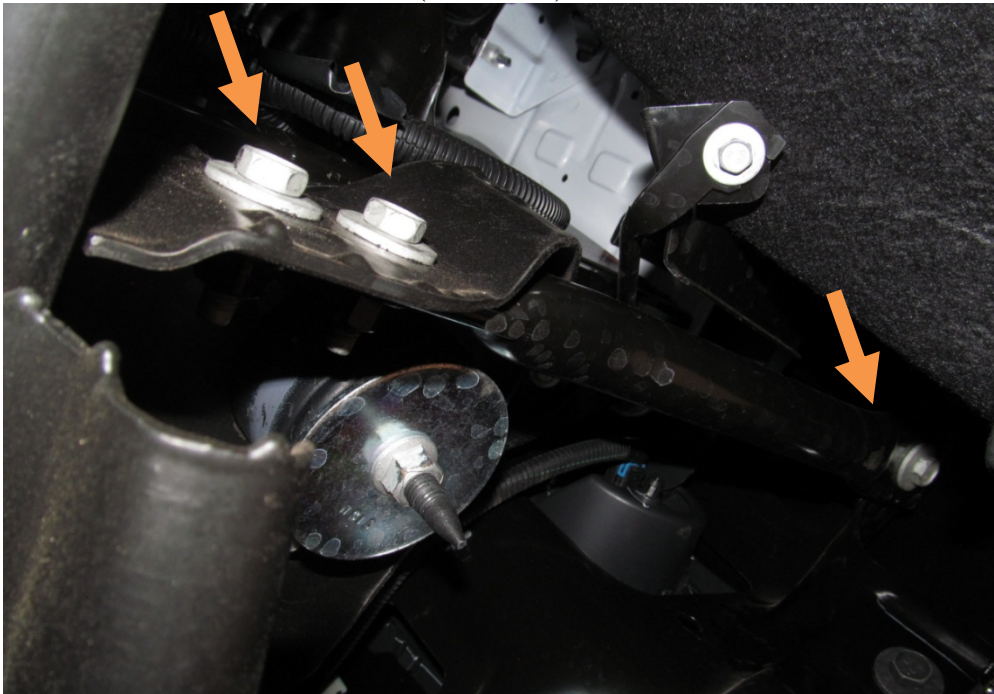


## 2014-2016 GMC 1500 FRONT

7. Remove OEM bumper bolt behind bumper with 18mm socket. (both sides)



8. Remove three bolts from OEM side bumper support (in front of tires) with 15mm socket. (both sides)







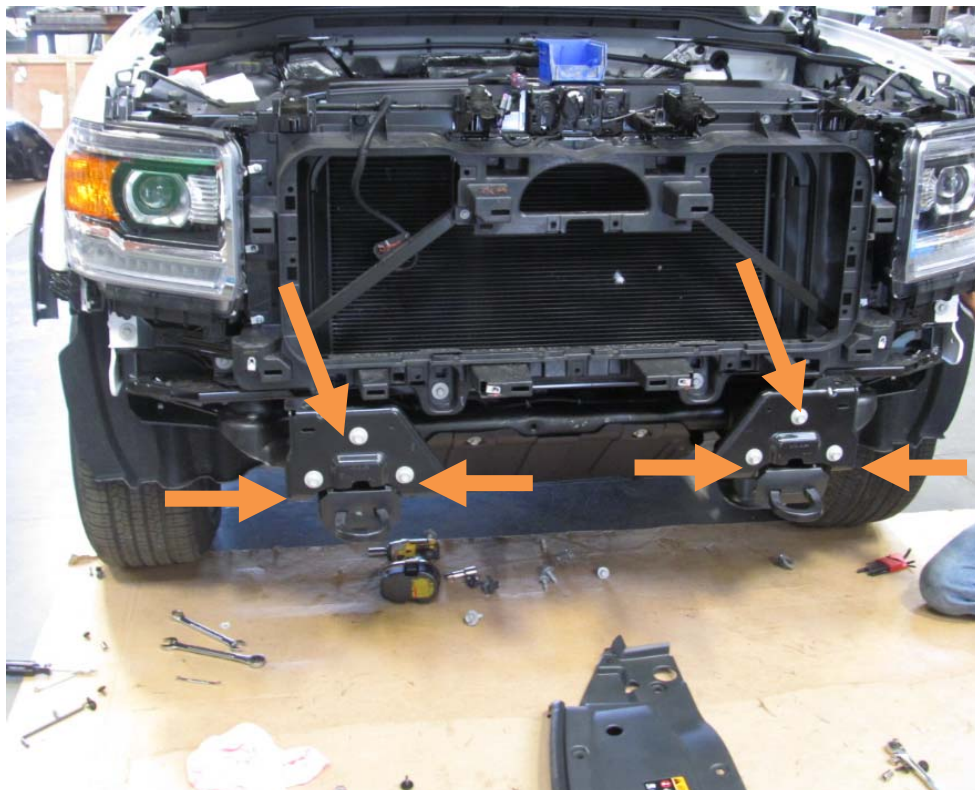
## 2014-2016 GMC 1500 FRONT

9. Remove OEM bumper bolt with 18mm wrench. (both sides)



10. Remove OEM bumper and set aside. Put it on eBay if you get a chance; you may make a few dollars.

11. Remove six bolts holding on OEM frame flanges to frame with 15mm socket.







## 2014-2016 GMC 1500 FRONT

12. Remove two bolts attaching OEM tow hooks with 18mm socket and wrench. (both sides) Set tow hooks aside.



### IV. INSTALLATION OF HAMMERHEAD BUMPER

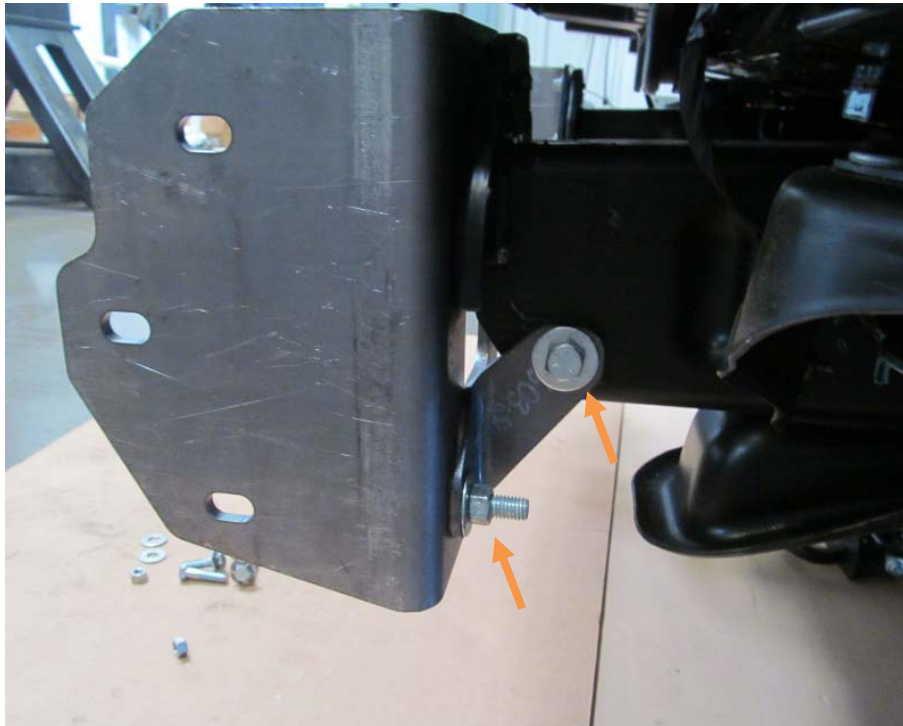
1. Install Hammerhead frame mounts with OEM hardware and loosely tighten.





## 2014-2016 GMC 1500 FRONT

2. Install Hammerhead lower frame mounts and loosely tighten. Use OEM hardware for thru frame bolt.



3. Reinstall OEM plastic trim.





## 2014-2016 GMC 1500 FRONT

4. Install and align Hammerhead bumper. Tighten all hardware.



Congratulations! Your installation is now complete.  
Thank you for your purchase.