

2009-20XX FORD F150

FRONT BUMPER INSTALLATION INSTRUCTIONS



SAFETY

Know safety, no injury. Know injury, no safety. ~Author Unknown

If there are any questions, call 1-855-HHTOUGH

- **READ ALL SAFETY INSTRUCTIONS BEFORE INSTALLATION**
 - FOLLOW ALL INSTRUCTIONS FOR PROPER ASSEMBLY
 - WEAR APPROPRIATE EYE PROTECTION
 - EXERCISE CARE WHEN LIFTING COMPONENTS
 - USE APPROPRIATE TORQUE FOR BOLTS
 - BLUE THREAD LOCKING COMPOUND IS RECOMMENDED ON ALL BOLT
 - SUGGESTED TORQUE VALUES FOR STEEL GRADE SAE 5 BOLT

| BOLT DIAMETER (INCH) | TREADS PER INCH | TORQUE (POUND-FEET) |
|-------------------------|-----------------|------------------------|
| 1/4 | 20 | 7 |
| 5/16 | 18 | 14 |
| 3/8 | 16 | 25 |
| 7/16 | 14 | 40 |
| 1/2 | 13 | 60 |
| 9/16 | 12 | 88 |
| 5/8 | 11 | 120 |
| 3/4 | 10 | 200 |
| 7/8 | 9 | 302 |
| 1 | 8 | 466 |



2009-2014 FORD F150

| <u>QUANTITY</u> | <u>PART NUMBER</u> | <u>DESCRIPTION</u> |
|-----------------|--------------------|---------------------------------|
| 1 | 600-56-0398 | 2009-2014 FORD F150 |
| 1 | 60K-56-0057 | HARDWARE KIT #57 (BAR MOUNT) |
| 1 | 60K-56-0001 | HARDWARE KIT #1 |
| 1 | 601-56-1379 | PASS FRAME MOUNT WELDMENT |
| 1 | 601-56-1380 | DRIVER FRAME MOUNT WELDMENT |
| 1 | 601-56-2958 | RIGHT BAR MOUNT |
| 1 | 601-56-2959 | LEFT BAR MOUNT |

I. TOOL LIST

1. 10mm socket
2. 21mm socket
3. 15mm socket
4. 3/4" socket
5. 3/4" wrench
6. 7/16" socket
7. 7/16" wrench

II. REMOVAL OF OEM BUMPER

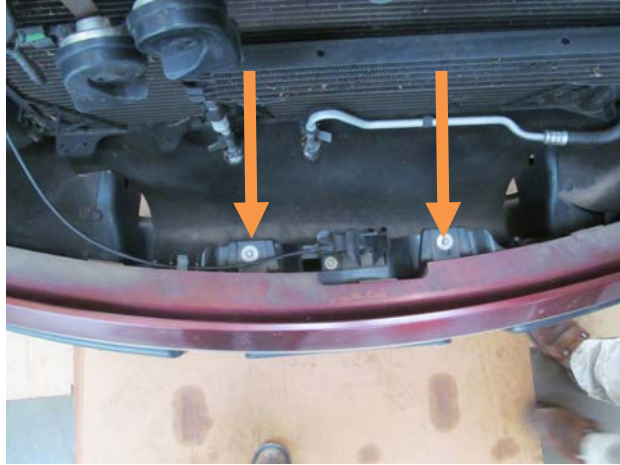
1. Unplug OEM fog lights.



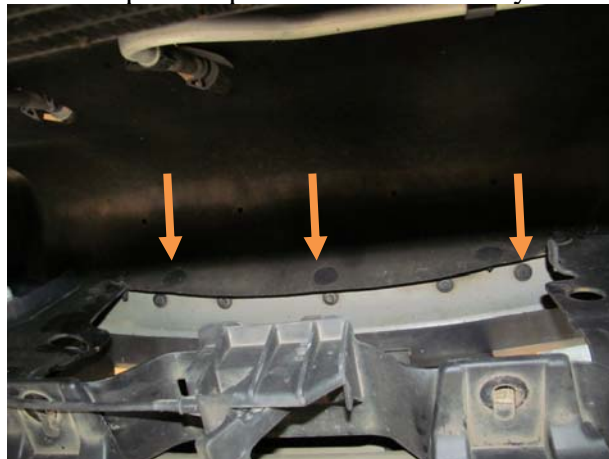


2009-2014 FORD F150

2. Open hood. Using a 10mm Socket remove two bolts from plastic valance.



3. Remove three plastic clips attaching dust shroud to OEM bumper and push shroud out of way.



4. Use a 21mm socket remove four nuts (2 per side) attaching OEM bumper to frame of vehicle.





2009-2014 FORD F150

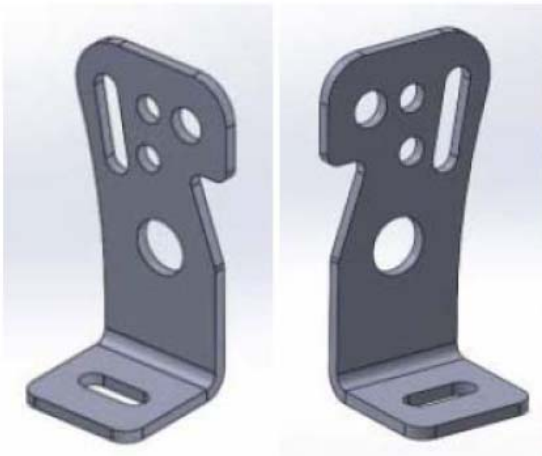
5. Remove OEM bumper from vehicle and set aside.



6. Using a 15mm socket remove tow hook bolts and set aside. (both sides).

III. INSTALLATION OF HAMMERHEAD BUMPER

1. Install all lights in Hammerhead bumper at this time. Use included Bar mount brackets (601-56-2958 and 2959) and Hardware kit #57 to attach 20" bar in bumper to mount in bumper. Use hole in bracket and bumper that works best with your light bar. Tighten bolts from hardware kit #57 with 7/16" socket and wrench.



2958 and 2959 brackets





2009-2014 FORD F150

2. Place Hammerhead frame mounts on OEM frame horns.



3. Install OEM tow hooks with OEM bolts and OEM nut strip into the bottom of the frame mounts into the frame. (both sides) If your truck does not have OEM tow hooks use four 1/2"-13x2" bolts, eight 1/2" flat washers, four 1/2" lock washers, and four 1/2"-13 nuts from Hardware kit #1. Do not fully tighten.
4. Using four 1/2"-13x2" bolts, eight 1/2" flat washers, four 1/2" lock washers, and four 1/2"-13 nuts from Hardware kit #1, attach Hammerhead bumper to frame mounts. Do not fully tighten.
5. Align bumper a minimum of 1/4" below plastic valance. When truck flexes off-road, this distance allows your bumper and body to have clearance. Use 3/4" socket and wrench tighten bolts. Tighten tow hook bolts at this time.



Congratulations! Your bumper installation is now complete.
Thank you for your purchase.