

2010-20XX DODGE 2500-5500

FRONT BUMPER INSTALLATION INSTRUCTIONS



SAFETY

Know safety, no injury. Know injury, no safety. ~Author Unknown

- **READ ALL SAFETY INSTRUCTIONS BEFORE INSTALLATION**
 - FOLLOW ALL INSTRUCTIONS FOR PROPER ASSEMBLY
 - WEAR APPROPRIATE EYE PROTECTION
 - EXERCISE CARE WHEN LIFTING COMPONENTS
 - USE APPROPRIATE TORQUE FOR BOLTS
 - BLUE THREAD LOCKING COMPOUND IS RECOMMENDED ON ALL BOLTS

California Proposition 65



WARNING

Cancer and Reproductive Harm

www.P65Warnings.ca.gov

DO NOT PAINT OVER THIS LABEL. REPLACE IF DAMAGED OR LOST

DKB150_00



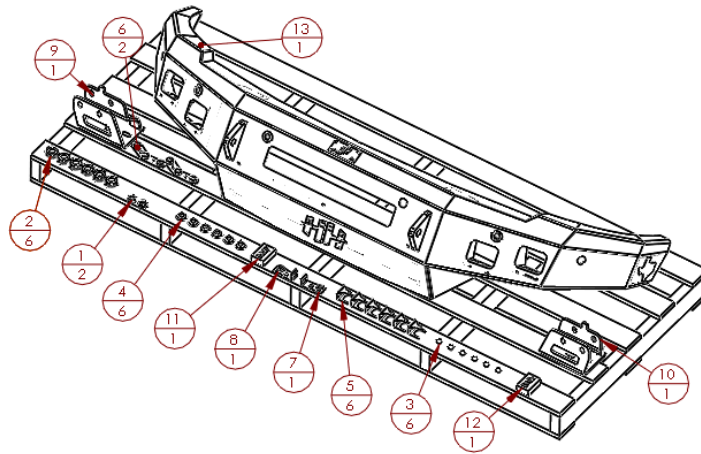
2010-20XX DODGE 2500-5500 FRONT BUMPER

Suggested Torque Values For Steel Grade 5 Standard Bolts		
BOLT DIAMETER (INCH)	THREADS PER INCH	TORQUE (POUND - FEET)
1/4	20	7
5/16	18	14
3/8	16	25
7/16	14	40
1/2	13	60
9/16	12	88
5/8	11	120
3/4	10	200
7/8	9	302
1	8	466

Suggested Torque Values For Steel Grade 8.8 Metric Bolts		
BOLT DIAMETER (mm)	THREAD PITCH (mm)	TORQUE (POUND-FEET)
6	1.0	7
8	1.25	16
10	1.5	32
12	1.75	55
14	2.0	88
16	2.0	140
18	2.5	195
20	2.5	275
22	2.5	375
24	3.0	475

I. PARTS LIST

ITEM NO.	QTY.	PART NUMBER	DESCRIPTION
1	2	307-13-0132	GROMMET, RUB 0.5"x0.25"x0.81"x1.0"
2	6	307-13-0231	PARK ASSIST SENSOR GROMMET
3	6	443-10-0927	PUSH IN BUMPER 5/16" HOLE SIZE
4	6	601-56-2316	OUTSIDE PLUG
5	6	601-56-2711	SENSOR CLIP
6	2	601-56-2868	WELDNUT TAB 3
7	1	601-56-2958	RIGHT BAR MOUNT
8	1	601-56-2959	LEFT BAR MOUNT
9	1	601-56-2960	RIGHT FRAME MOUNT WELDMENT
10	1	601-56-2961	LEFT FRAME MOUNT WELDMENT
11	1	60K-56-0057	HARDWARE KIT # 57
12	1	60K-56-0058	HARDWARE KIT # 58
13	1	60P-56-0428	600-56-0428 POLISHED



II. TOOL LIST

1. 18mm wrench
2. 10mm socket
3. 13mm wrench
4. 24mm wrench
5. 24mm socket
6. $\frac{3}{4}$ " socket
7. $\frac{3}{4}$ " wrench
8. $\frac{7}{16}$ " wrench
9. $\frac{7}{16}$ " socket
10. Heavy duty scissors

III. REMOVAL OF OEM BUMPER

A. 2010-20XX DODGE 2500-5500

1. (Diesel only) open hood and remove "heavy duty" plastic cover by taking out four Christmas tree inserts.

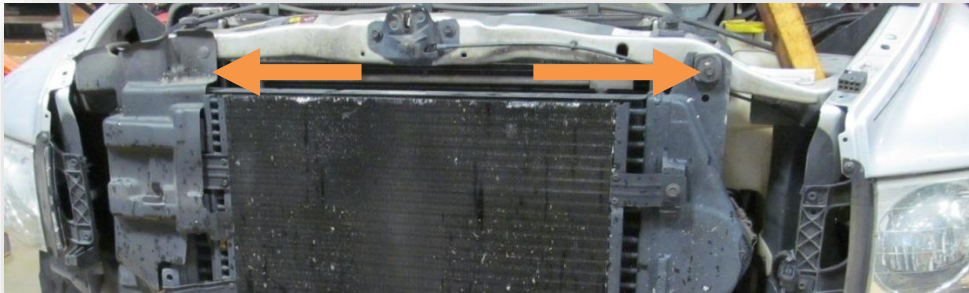


2010-20XX DODGE 2500-5500 FRONT BUMPER

2. (Diesel only) Using a 10mm socket remove the grill by taking out four screws on top of grill. Pull gently on bottom of grill after screws are removed to release plastic tabs. Remove grill and set aside.



3. (Diesel only) Using a 13mm socket, remove two bolts holding top of intercooler.

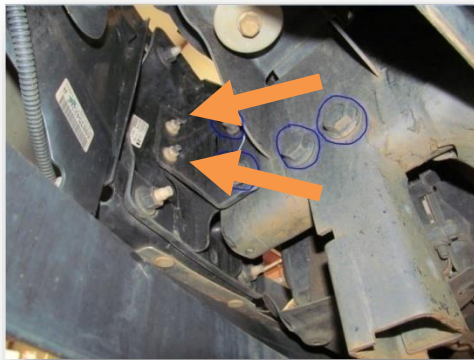


4. (Gas and Diesel) Disconnect OEM fog light wiring harness from driver side behind bumper.

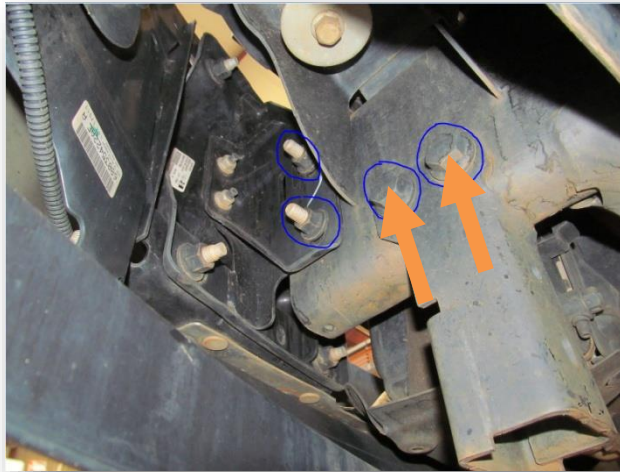
2010-20XX DODGE 2500-5500 FRONT BUMPER



5. (Gas and Diesel) Using 18mm socket, remove two nuts that hold on the bolt strip (Be mindful of any sharp edges on bracket.) On diesel, carefully move one side of intercooler to ease in removal of bolt strip. (both sides) Carefully remove OEM bumper and set aside. Bolt strip will be reused to mount Hammerhead bumper.



6. Using a 24mm socket and wrench, remove two bolts that hold on lower frame mount. (both sides) Remove lower mount and set aside.



7. (Diesel only) Using 13mm socket, reinstall and tighten two bolts holding the top of intercooler
8. (Diesel only) Replace grill with hardware and “Heavy Duty” plastic cover with hardware.

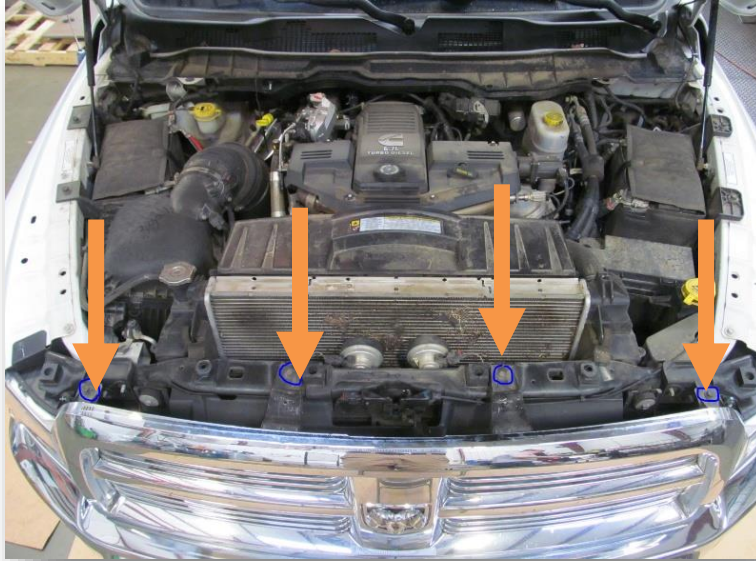
B. 2013-20XX DODGE 2500-5500 (Diesel only) Gas engine trucks will use section A)

1. Open hood and remove “Heavy Duty” plastic cover by taking out four Christmas tree inserts.



2010-20XX DODGE 2500-5500 FRONT BUMPER

2. Using a 10mm socket remove the grill by taking out four screws on top of grill. Pull gently on bottom of grill after screws are removed to release plastic tabs. Remove grill and set aside.



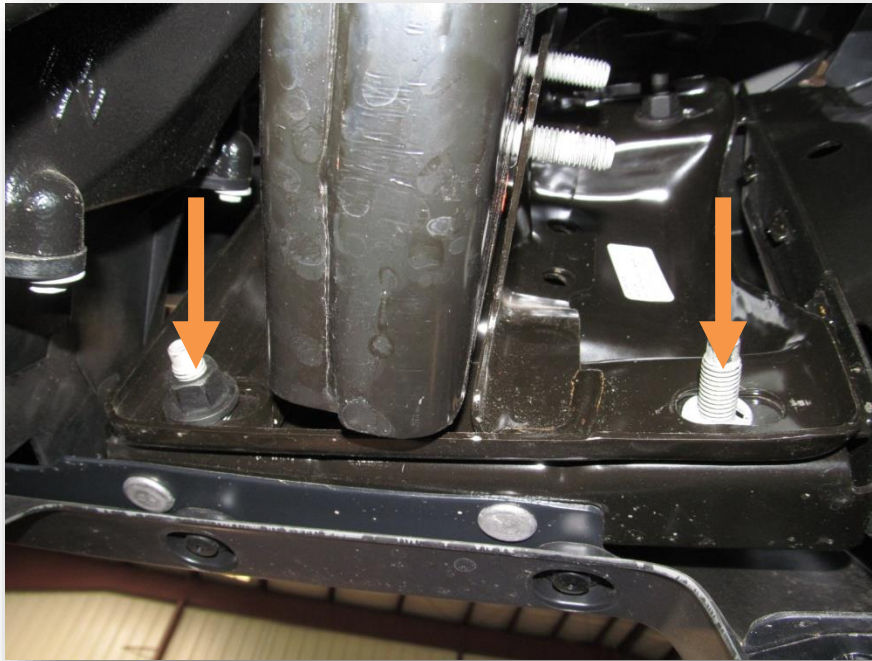
3. Using 18mm socket remove two nuts from the top of the bumper bracket. (both sides)





2010-20XX DODGE 2500-5500 FRONT BUMPER

4. Using 18mm socket remove two nuts holding on bottom of bumper bracket to bumper. (both sides)

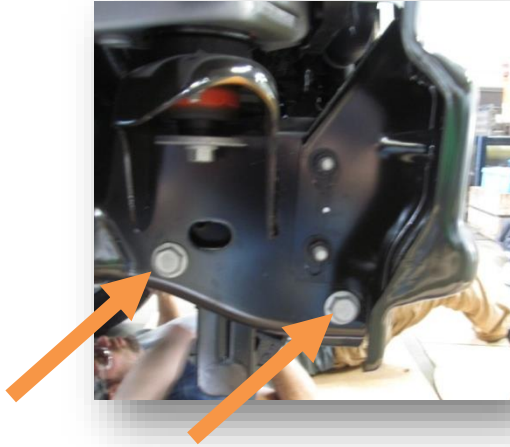


5. Carefully Remove OEM bumper and set aside.



2010-20XX DODGE 2500-5500 FRONT BUMPER

6. Using a 24mm socket remove two bolts. (both sides)



7. (On 4500's and 5500's) remove tow hooks from both sides and set aside.



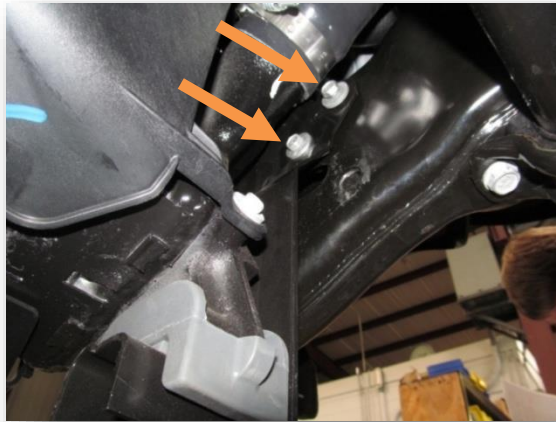
8. Using an 18mm socket remove two nuts. (both sides)





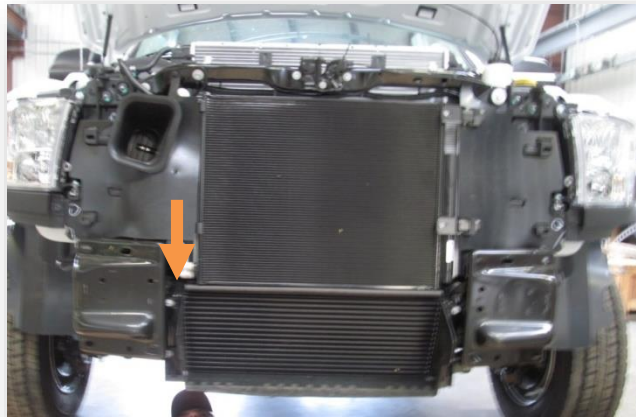
2010-20XX DODGE 2500-5500 FRONT BUMPER

9. **LOOSEN** two 13mm bolts from intercooler bracket. **DO NOT REMOVE.** (both sides)



10. Remove pass side bolts from step 9.

11. Pull Intercooler down on passenger side to allow clearance for the bolt strip.



12. Remove bolt strip on Passenger side. (Bumper bracket will fall off once bolt strip is removed. Be mindful of any sharp edges on bracket)

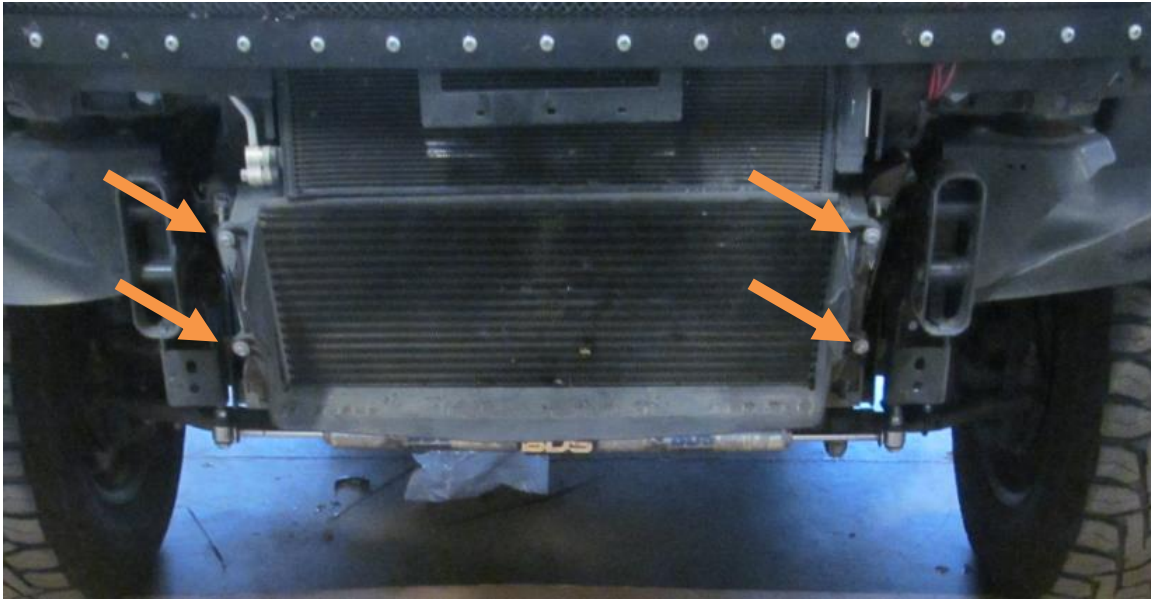


13. Push intercooler back up and install bolts from step 10. (Do not tighten)

14. Repeat steps 10-13 for driver side.

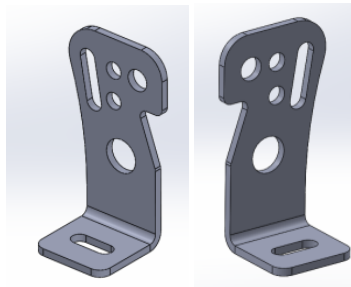
15. Using a 13mm socket tighten all bolts from inner cooler brackets.

16. Using 8mm socket, remove four screws attaching plastic shroud to intercooler. Remove shroud and set aside.



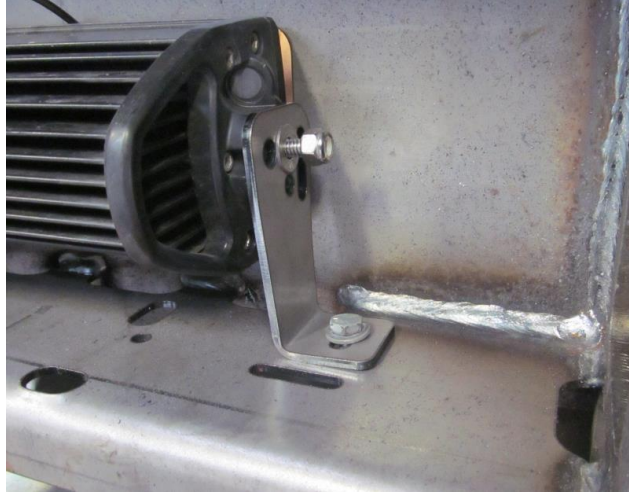
IV. INSTALLATION OF HAMMERHEAD BUMPER

1. Install all lights and sensors in Hammerhead bumper at this time. Use included Bar mount brackets (601-56-2958 and 2959) and Hardware kit #57 to attach 20" bar in bumper to mount in bumper. Use hole in bracket and bumper that works best with your light bar. Tighten bolts from hardware kit #57 with 7/16" socket and wrench.



2958-2959 brackets

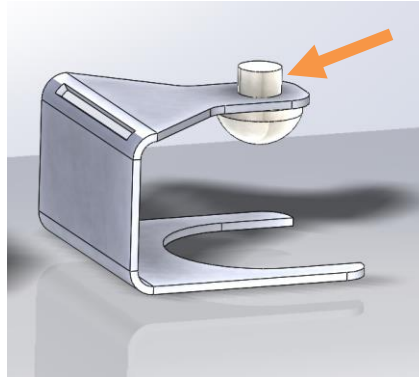
2010-20XX DODGE 2500-5500 FRONT BUMPER



2. For bumpers without sensors, install outside plugs. (601-56-2316) (qty-6)



3. For bumpers with sensors, install rubber grommets (307-13-0231) in bumper. Place a drop of dish washing soap on each sensor to lubricate it. Install OEM sensors in bumper. The sensor's plugs will face inward. **NOTE: DO NOT TWIST SENSOR WHILE INSTALLING. THIS WILL DAMAGE IT.**
4. Install rubber bumper (443-10-0927) (orange arrow) in sensor clip. (601-56-2711) (qty-6)





2010-20XX DODGE 2500-5500 FRONT BUMPER

5. Slide sensor clip over grommet and ensure rubber bumper touches the back of the sensor. This clip will retain the sensor in the grommet.



6. Install OEM sensor wiring harness and plug sensors in.
7. Layout Hammerhead frame mounts and OEM hardware as shown. Install mounts on frame. Slide bolt strips in from outside of frame. Do not fully tighten.





2010-20XX DODGE 2500-5500 FRONT BUMPER

- Layout weldnut tab 3 (601-56-2868) and hardware from hardware kit #58 as shown. You will use six ½"-13x1.5" bolts, six ½" flat washers, and six ½" lock washers to attach your Hammerhead bumper to the Hammerhead frame mounts.



- Using a hoist or a few friends, attach bumper to frame mounts using hardware. Put bolts in from the truck side through Hammerhead frame mounts. Use the weldnut tab on the bumper side. Start all bolts before aligning bumper. Align bumper a minimum of ¼" below headlights. When truck flexes off-road, this distance allows your bumper and body to have clearance. Tighten bolts with ¾" socket or wrench. Tighten frame mount bolts at this time.
- Trim inner fenders to match bumper.



Congratulations! Your bumper installation is now complete.
Thank you for your purchase.