

# 2007-2013 Jeep Wrangler JK

## REAR BUMPER INSTALLATION INSTRUCTIONS



## SAFETY

**Know safety, no injury. Know injury, no safety. ~Author Unknown**

- **READ ALL INSTRUCTIONS BEFORE INSTALLATION**
  - FOLLOW ALL INSTRUCTIONS FOR PROPER ASSEMBLY
  - WEAR APPROPRIATE EYE PROTECTION
  - EXERCISE CARE WHEN LIFTING COMPONENTS
  - USE APPROPRIATE TORQUE FOR BOLTS
  - BLUE THREAD LOCKING COMPOUND IS RECOMMENDED ON ALL BOLTS
  - CHECK TORQUE AFTER FIRST 100 MILES



## 2007-2013 Jeep Wrangler JK Rear Bumper

### I. PARTS LIST

ITEM NO.	QTY.	PART NUMBER	DESCRIPTION
1	1	60P-56-0319	600-56-0319 POLISHED
2	2	307-13-0115	4" WHITE ROUND BU LIGHT
3	2	307-13-0148	GROMMET FOR 4" RD SEALED LIGHT
4	4	318-12-0005	0.188" X 0.125" AL POP RIVET
5	2	601-56-2198	N PLATE 2 WELDMENT
6	1	601-56-9992	BLACK HAMMERHEAD LABEL W/ HOLES
7	2	601-56-9997	BACK-UP LIGHT PIGTAIL
8	1	60K-56-0020	HARDWARE KIT #20

### II. TOOL LIST

1. 16mm Wrench/Socket
2. 19mm Socket
3. 17/32" Drill bit
4. 3/16" Drill bit
5. 11/32" Drill bit
6. 3/4" Socket/Wrench
7. Center punch
8. Ball-Peen Hammer



## 2007-2013 Jeep Wrangler JK Rear Bumper

### III. REMOVAL OF OEM BUMPER

1. Using 16mm socket remove two bolts from bumper brackets to the frame (both sides). See Figure 1. Save these for later, they will be reused.



Figure 1:

2. . Using 16mm socket remove two bolts located on the center of plastic OEM bumper. See figures 2a, and 2b.



Figure 2a.



## 2007-2013 Jeep Wrangler JK Rear Bumper

3. Open Jeep rear door and swing out till it is at its fully open position. See Figure 3.



Figure 3

4. Carefully Remove OEM bumper and set aside. See Figure 4.



Figure 4

5. Using 16mm remove two bolts holding on brackets to receiver hitch.. See Figure 5



## 2007-2013 Jeep Wrangler JK Rear Bumper



Figure 5

6. Remove brackets and set aside. See Figure 6



Figure 6

7. Using 19mm socket remove 2 bolts on the side of the driver side frame rail. See Figure 7.



## 2007-2013 Jeep Wrangler JK Rear Bumper

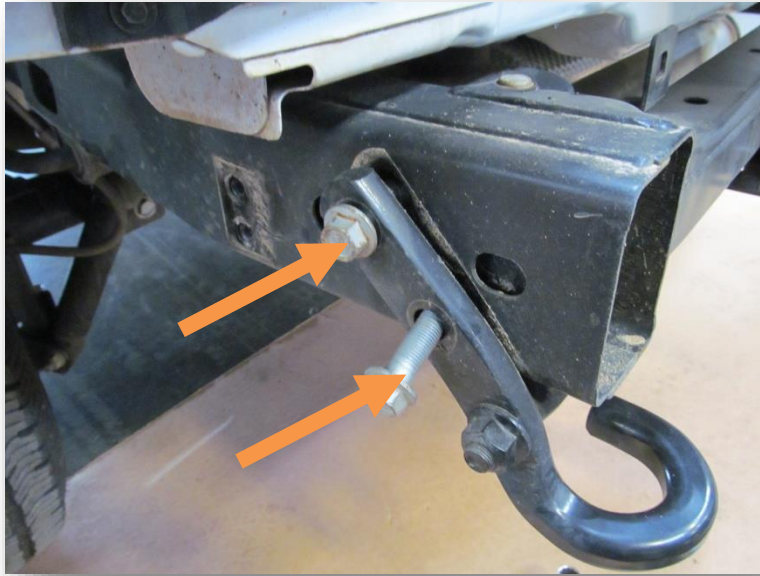


Figure 7

8. Using 19 mm socket remove single bolt holding on tow hook on the bottom of driver side frame rail. See figure 8.

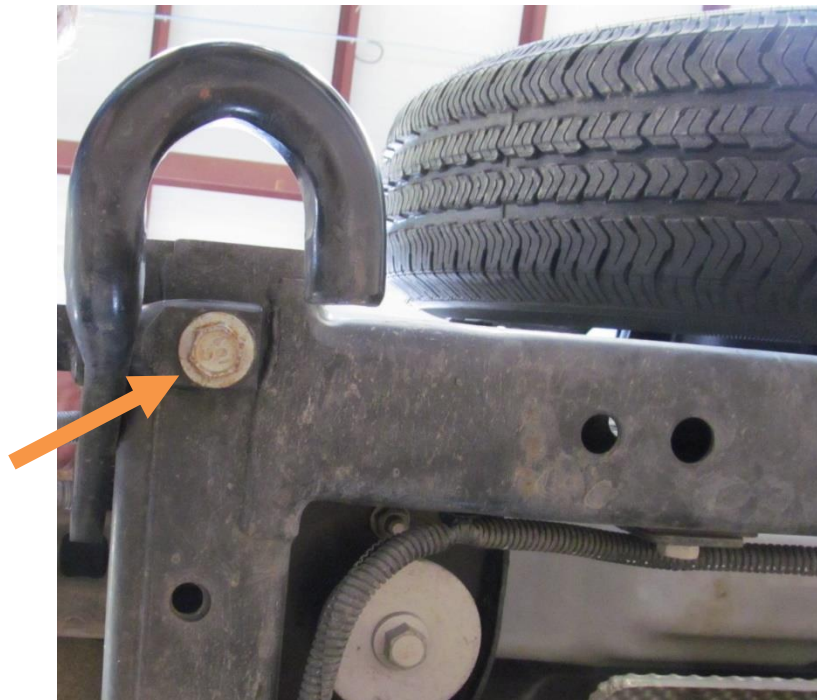


Figure 8.



## 2007-2013 Jeep Wrangler JK Rear Bumper

9. Remove tow hook and set to the side. See Figure 9



Figure 9

10. From the inside of driver side frame rail remove tow hook bracket. See Figure 10

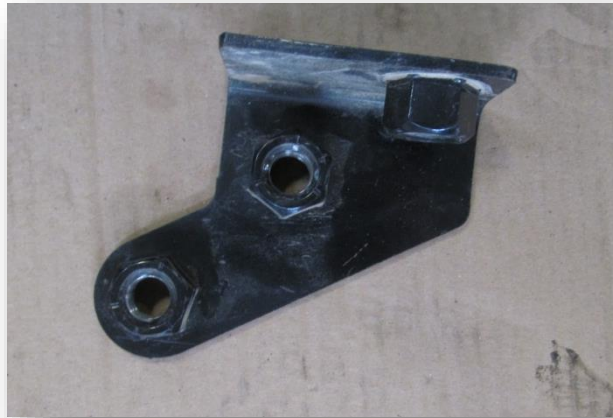


Figure 10



## 2007-2013 Jeep Wrangler JK Rear Bumper

### III. INSTALL INSTRUCTIONS

1. Place the frame mounts on the **OUTSIDE** of frame. See Figure 11.



Figure 11

2. Using a 16mm socket tighten two OEM bolts per side from uninstal step one to the frame mounts noting mounts are on the **OUTSIDE** of frame. See Figure 12



Figure 12





## 2007-2013 Jeep Wrangler JK Rear Bumper

- Using  $\frac{3}{4}$ " socket and wrench tighten one  $\frac{1}{2}$ "-13 bolts from Hardware Kit #1. (Both Sides) See Figure 13.



Figure 13

- On the passenger side only** Use a center punch to mark two holes in the center of the holes on the bottom flange of the Hammer Head frame mount. See Figure 14.

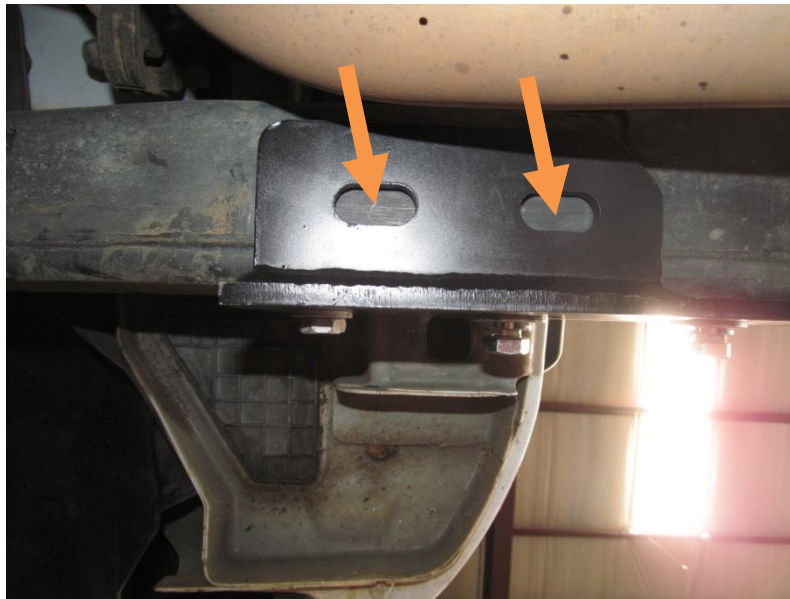


Figure 14: Underneath view of passenger side frame mount.



## 2007-2013 Jeep Wrangler JK Rear Bumper

5. Using a 3/16" drill bit, drill two pilot holes using the center punch marks to locate. See Figure 15.



Figure 15

6. Using 11/32" drill bit enlarge pilot holes previously created in step 5 of install instructions.
7. Using 17/32" drill bit enlarge the previously drilled pilot holes from step 6 of install instructions.
8. De-burr all sharp edges created from drilling.



## 2007-2013 Jeep Wrangler JK Rear Bumper

- Using a  $\frac{3}{4}$ " wrench and socket tighten two  $\frac{1}{2}$ "-13 bolts from hardware kit # 1 to bottom of frame mounts to frame. (Both sides). Run the bolts from the inside of the frame. See Figure 16



Figure 16

- Use  $\frac{3}{4}$ " wrench and socket tighten one  $\frac{1}{2}$ " -13 bolt in frame mount from hardware kit # 1. See Figure 17.



Figure 17



## 2007-2013 Jeep Wrangler JK Rear Bumper

11. Install HammerHead bumper onto the frame mounts. The bumper attached to the **inside** of the frame mounts. See Figure 18.



Figure 18

12. Using two ½” -13 bolts per side from Hardware kit # 4 hand tighten bolts from frame mount into shackle mount of bumper. See Figure 19

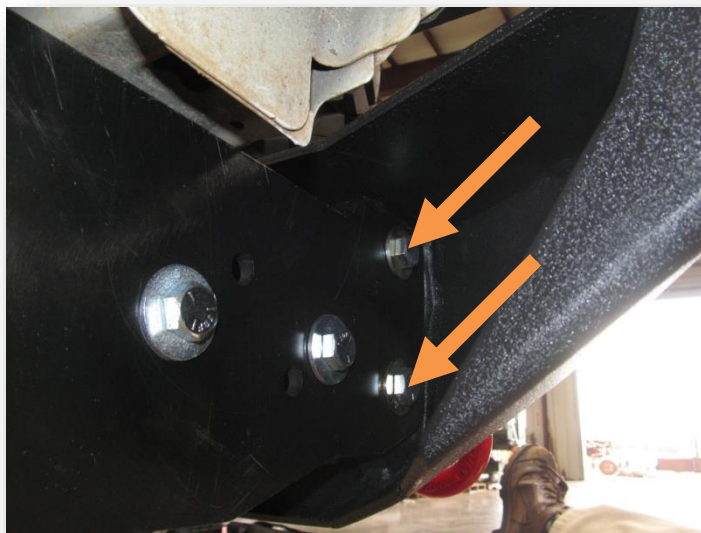


Figure 19



## 2007-2013 Jeep Wrangler JK Rear Bumper

13. Align bumper to be level with vehicle.
14. Using a  $\frac{3}{4}$ " socket and wrench tighten bolts from install step 12 to bumper.

**Congratulations!!**

