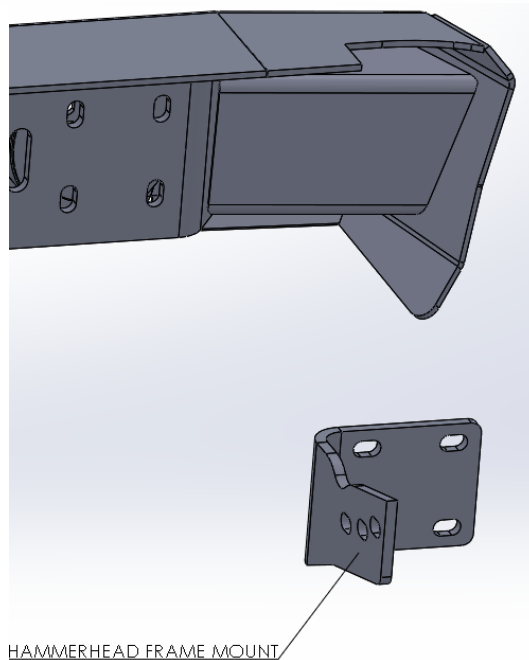
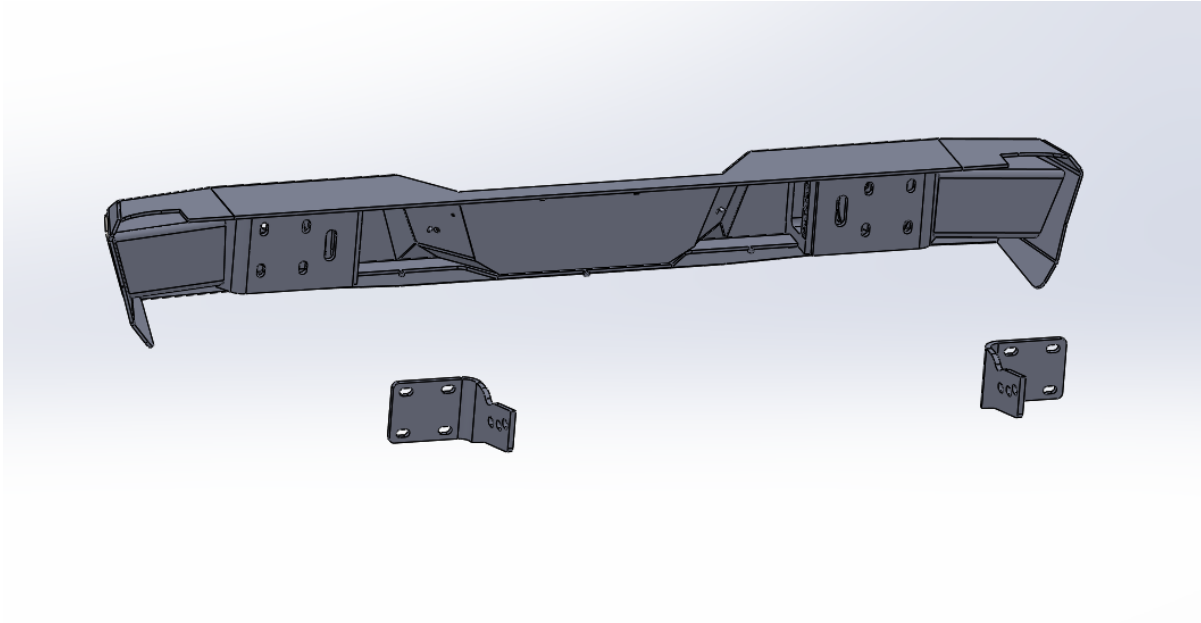


1994-2002 Dodge 1500-3500 Rear Bumper Install

1. Install all lights and license plate mounting kit into Hammerhead Bumper.
2. Use OEM hardware to attach Hammerhead frame mounts to OEM frame.
3. Have a friend help you place the bumper onto the rear of the truck.
4. Use hardware from Kit #1 to attach bumper to Hammerhead frame mounts.



HAMMERHEAD FRAME MOUNT