



HAMMERHEADARMOR.COM | 1-800-HHTOUGH



 HammerheadArmor  Hammerheadarmor  HammerheadOff-RoadArmor

2025-20XX

DODGE RAM 1500

INSTALLATION INSTRUCTIONS



600-56-1186

PLEASE READ BEFORE YOU START

TO ENSURE A QUALITY INSTALLATION READ ALL INSTRUCTIONS AND WARNINGS THOROUGHLY BEFORE BEGINNING ANY WORK. THE INSTRUCTIONS ASSUME A CERTAIN AMOUNT OF MECHANICAL ABILITY AND ARE NOT INTENDED FOR SOMEONE UNFAMILIAR WITH AUTO REPAIR. FAILURE TO FOLLOW THESE INSTRUCTIONS COULD LEAD TO PERSONAL INJURY, DEATH, AND/OR PROPERTY DAMAGE.

HAMMERHEADARMOR.COM | 1-800-HHTOUGH

SAFETY

READ ALL SAFETY INSTRUCTIONS BEFORE INSTALLATION

If there are any questions, call 1-855-HHTOUGH

PRODUCT INSTALLATION SAFETY

- Follow all instructions for proper assembly.
- Always remove jewelry and wear eye protection.
- Park vehicle on a level surface, engage parking brake, and chock wheels before performing work on vehicle.
- Exercise care when lifting components. Team lift or use crane for items over 50lbs.
- Ensure all fingers and body parts are kept away from pinch points.
- Exercise care when trimming and cutting. Failure in doing so may cause harm or damage.
- Only use the hardware supplied for installation.
- Use appropriate torque for bolts. (Use the wet torque values if you are using Loctite or Anti-Seize, if not use the dry torque values)

Suggested Torque Values for Standard Hex Bolts (ft/lb)				
Bolt Size	Grade 5		Grade 8	
	Dry	Wet	Dry	Wet
1/4-20	8	6.3	12	9
5/16-18	17	13	25	18
3/8-16	30	23	45	35
7/16-14	50	35	70	55
1/2-13	75	55	110	80
9/16-12	110	80	150	110
5/8-11	150	110	220	170
3/4-10	260	200	380	280
7/8-9	863	648	606	303
1-8	1295	971	909	454

Suggested Torque Values for Metric Hex Bolts (ft/lb)				
Bolt Size	Grade 8.8		Grade 10.9	
	Dry	Wet	Dry	Wet
M6	10.4	7.8	15	11.2
M8	25.4	19.1	37.6	27.3
M10	50	38	72	54
M12	88	66	126	94
M14	141	106	201	150
M16	218	164	312	233
M18	301	226	431	323
M20	426	319	609	457
M22	580	435	831	624
M24	736	552	1052	789

PRODUCT USAGE SAFETY

- Do not alter or modify product in any way. Doing so may void warranty or lead to personal injury. (Visit hammerheadarmor.com/support/policies/ for warranty details)
- Re-torque hardware at each oil change.
- In the event of a collision, inspect product and mounts for damage before usage.
- After vehicle recovery or winching, inspect mounts and hardware.
- For proper winch usage refer to the winch manufacturer's guidelines.

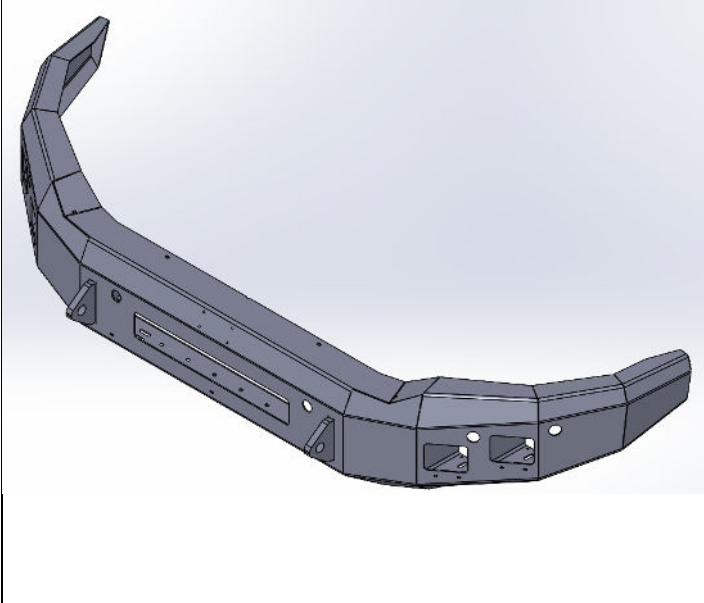
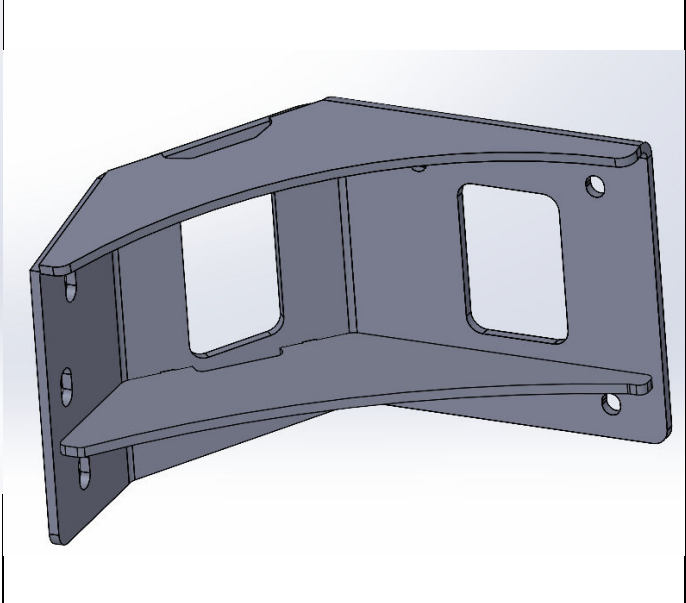
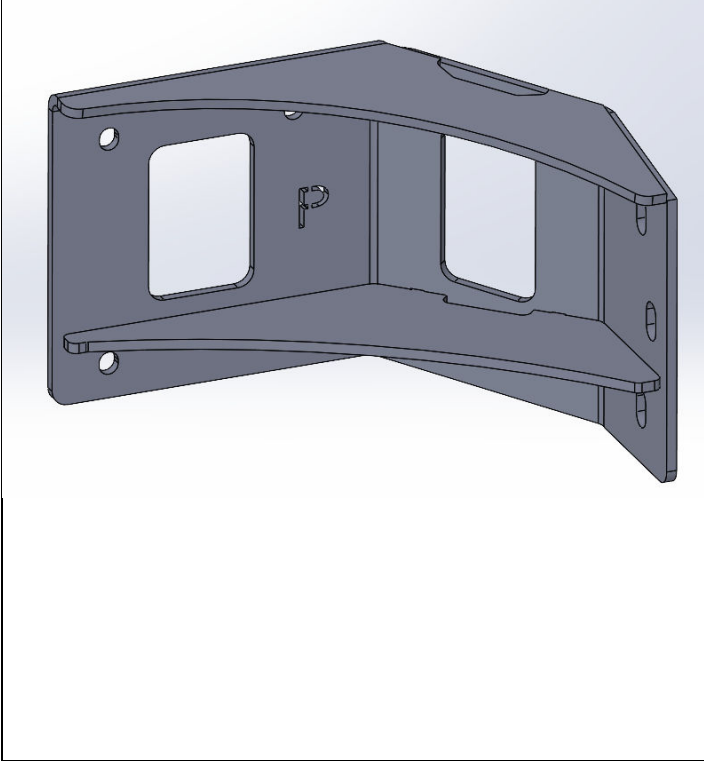
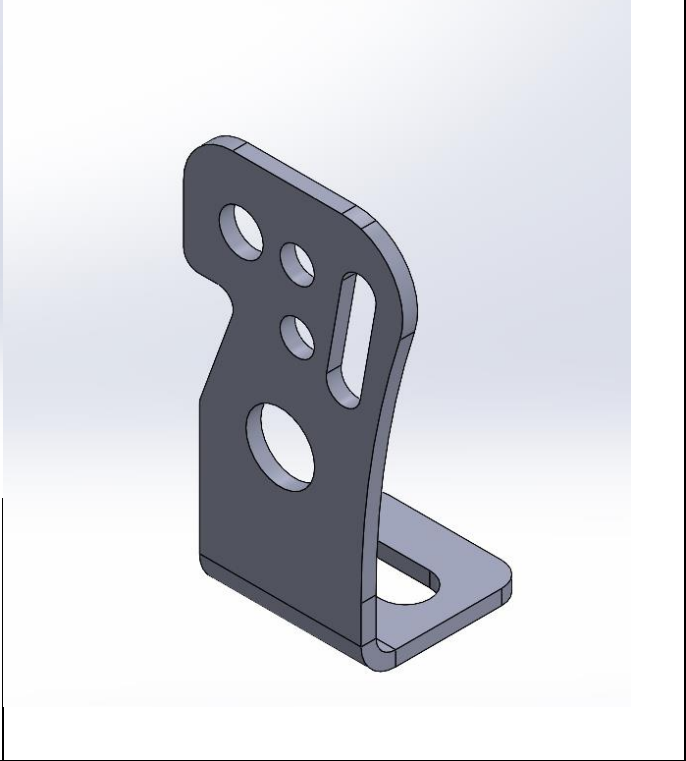
California Proposition

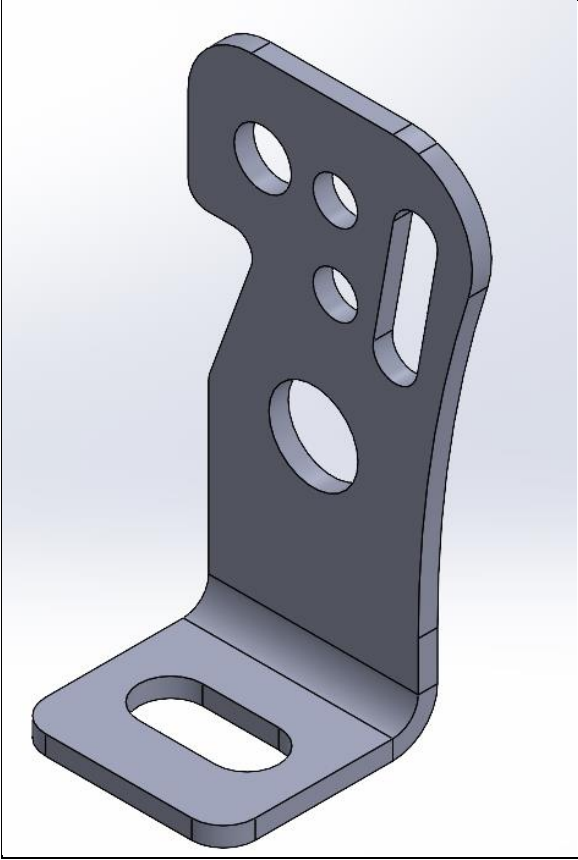


WARNING: This product contains chemicals known to the state of California to cause cancer and birth defects or other reproductive harm.

For more information visit: www.P65warnings.ca.gov

I. PARTS LIST

ITEM 1	60P-56-1067	QTY. 1	ITEM 2	601-56-7009	QTY. 1
					
ITEM 3	601-56-7026	QTY. 1	ITEM 4	601-56-7138	QTY. 1
					

ITEM 5	601-56-7139	QTY. 1	ITEM 6	INSTALL KITS	QTY. 1
			<ul style="list-style-type: none">✓ INSTALL KIT #0008 (60H-56-0008) x1✓ HARDWARE KIT #0058 (60K-56-0058) x1✓ HARDWARE KIT #0185 (60K-56-0185) x1		

REMOVE CONTENTS FROM BOX AND VERIFY ALL PARTS ARE PRESENT.

If there are any questions, call 1-855 HHTOUGH or email HHORDERS@hammerheadarmor.com

II. TOOL LIST

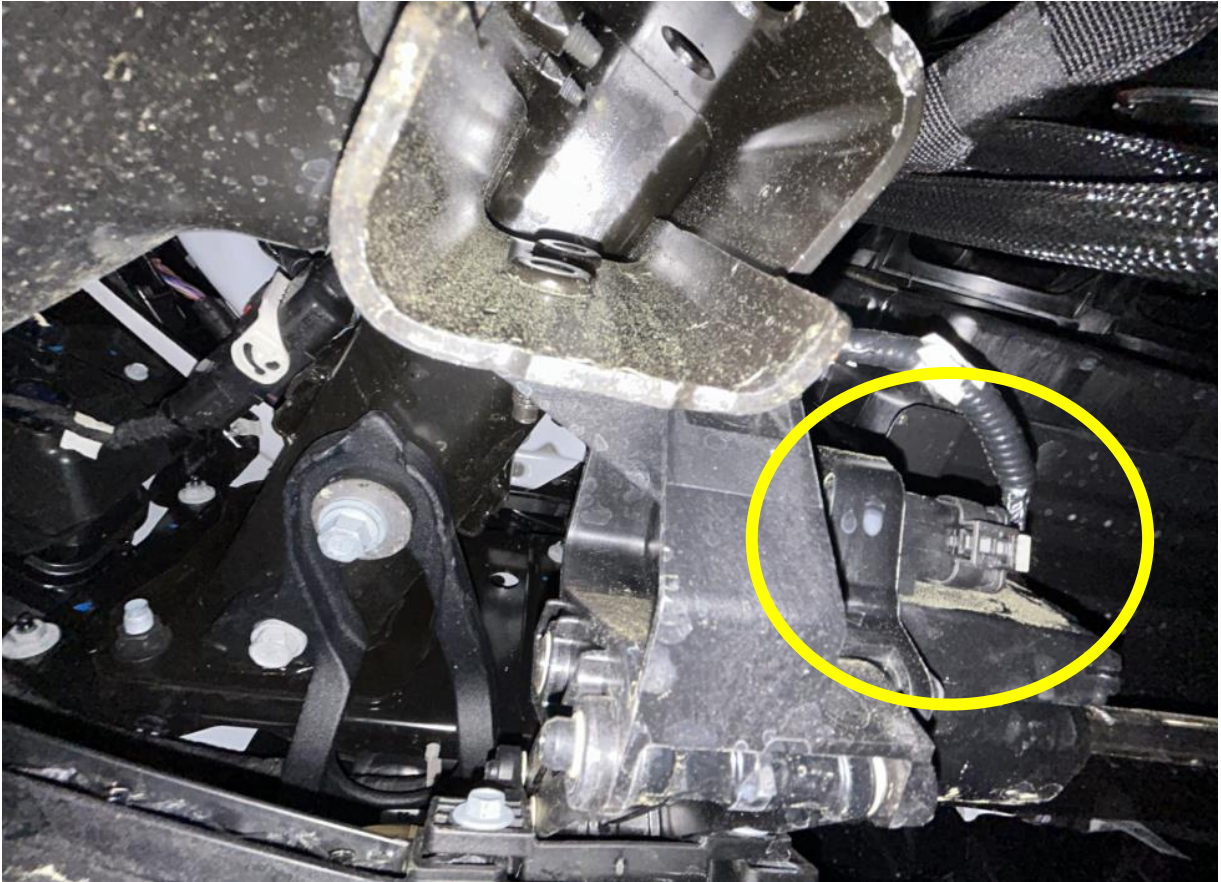
- ✓ A crane or a helper
- ✓ Basic tool set
- ✓ Blue masking tape
- ✓ Trim tool
- ✓ 5/8" socket
- ✓ 5/8" wrench
- ✓ 3/4" socket
- ✓ 10 mm socket
- ✓ 18 mm socket
- ✓ 21 mm socket

III. VEHICLE PREPARATION

1. Park vehicle on level surface.
2. Engage parking brake, disconnect battery, and chock the wheels.
3. Using blue masking tape, mask along the profile of your vehicle above the bumper. This will help protect your vehicle from any accidental scratches.

IV. REMOVAL OF OE BUMPER

1. Unplug the wire connected to the air dam.



2. Unplug the wire harness connection on the driver side of the bumper.



3. Unplug the wire harness connection on the passenger side of the bumper.



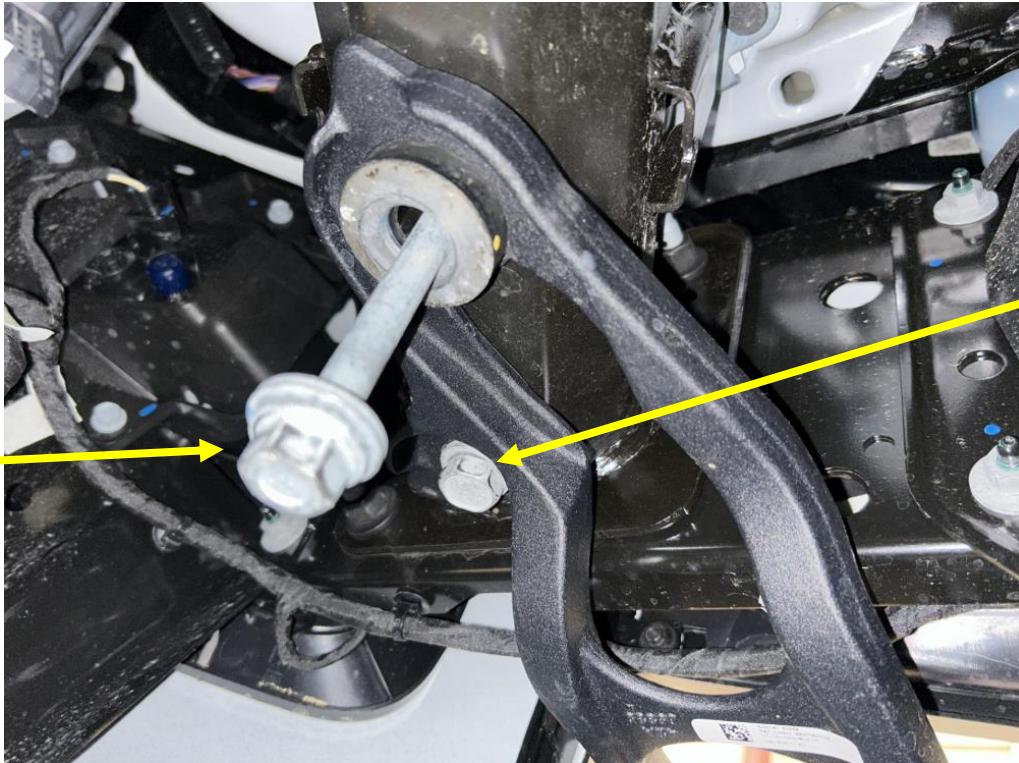
4. Remove the 4x flange nuts holding the Air Dam on using an 18 mm wrench. Ensure the wire harness connection in step 1 is disconnected. Note: The Air Dam will NOT be reinstalled upon installation of the Hammerhead Bumper.



5. Using a 10 mm socket loosen the two bolts attaching the plastic fascia in the wheel wells of the vehicle. Note: It is not necessary to completely remove the bolts. The holes in the plastic are slotted for ease of removal.



6. Using an 18 mm socket, loosen the bolt securing the tow hook to the frame. Note: Do not fully remove the bolt. The tow hook is slotted and can be removed by sliding it towards the cab of the truck once step 7 is completed.
7. Next, using a 21 mm socket remove the other bolt holding the tow hook on.



8. Using an 18 mm socket, remove the six bolts (these bolts will not be reused later) securing the bumper to the frame horns (A deep well socket and extension may be useful here). Finally, ensure all wire harness connections are unplugged (steps 1-3), remove the bumper from the vehicle and set aside.

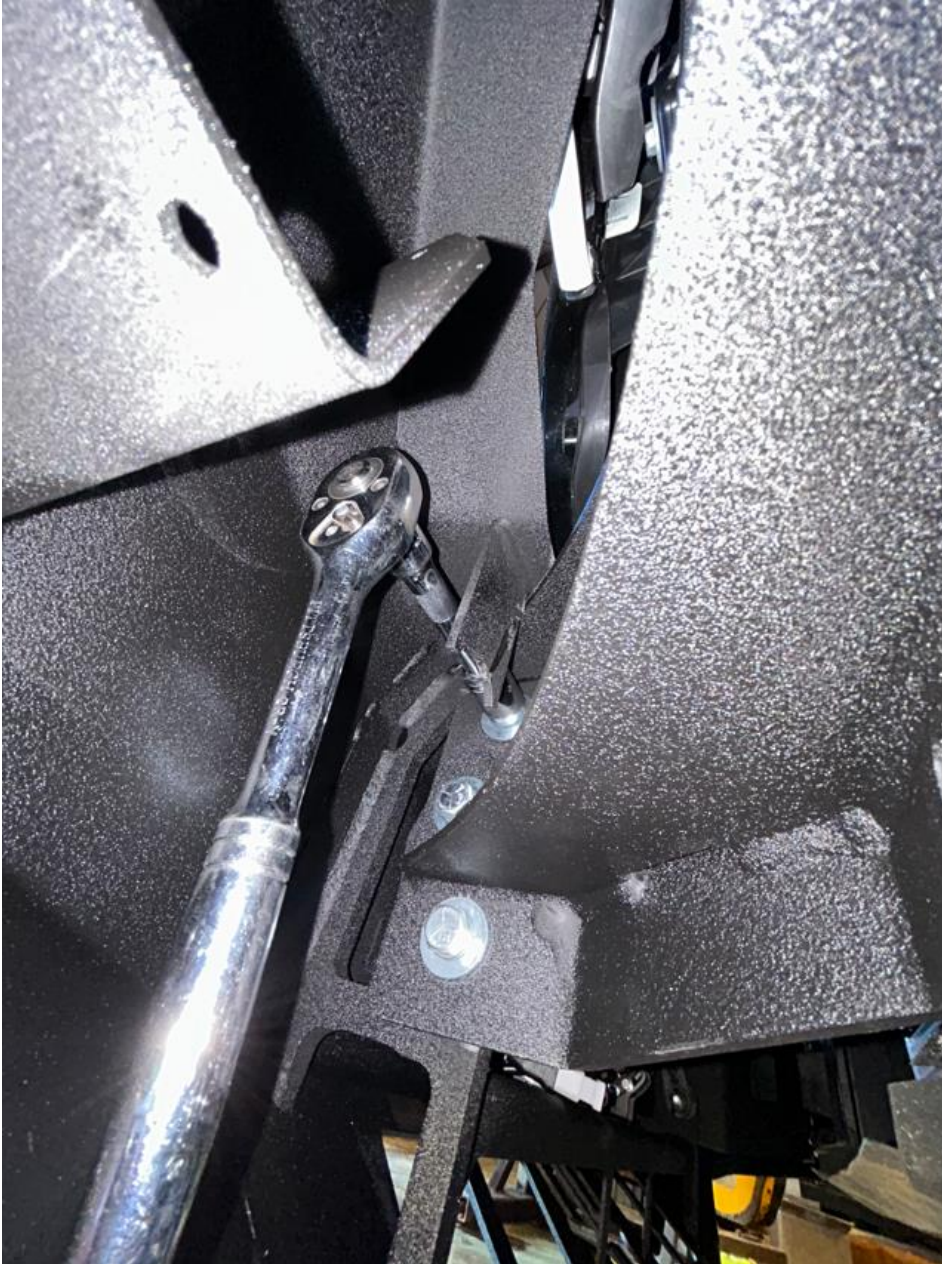


V. INSTALLATION OF HH BUMPER

1. Using a 5/8" socket and wrench install the frame mounts on either side using hardware kit #185.



2. At this point install any lights in the bumper shell. (Lights can be installed while the bumper is on the vehicle but it is more difficult.)
3. Using a crane or helper attach the bumper shell to the frame mounts using hardware kit #58, the weldnut tabs, a $\frac{3}{4}$ " socket, and extension. Hand tighten all six bolts.



4. Use a level to ensure the bumper is straight. Check and compare the distance between the bumper and the truck body on both the driver and passenger sides. Once the bumper is properly aligned, tighten all bolts.



**Congratulations! Your product installation is now complete.
Thank you for your purchase!**

04/28/2025

REV 00

HAMMERHEADARMOR.COM | 1-800-HHTOUGH