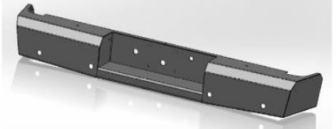




# Replacement Rear Bumper

Part No. FX1005



Fits: 2010-Current

Dodge Ram 2500/3500HD



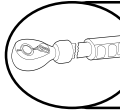
ASSISTANCE IS RECOMMENDED.



REMOVE CONTENTS FROM BOX. VERIFY ALL PARTS ARE PRESENT.



READ INSTRUCTIONS CAREFULLY BEFORE STARTING INSTALLATION.



DO NOT OVER TORQUE. STANDARD OPERATING LOAD FOR TIGHTEN BODY MOUNT NUTS & BOLTS VARIES FROM 45 TO 65 FOOT POUND.



60-180 min



Cutting Not Required



Drilling Required



support@trailfx.com



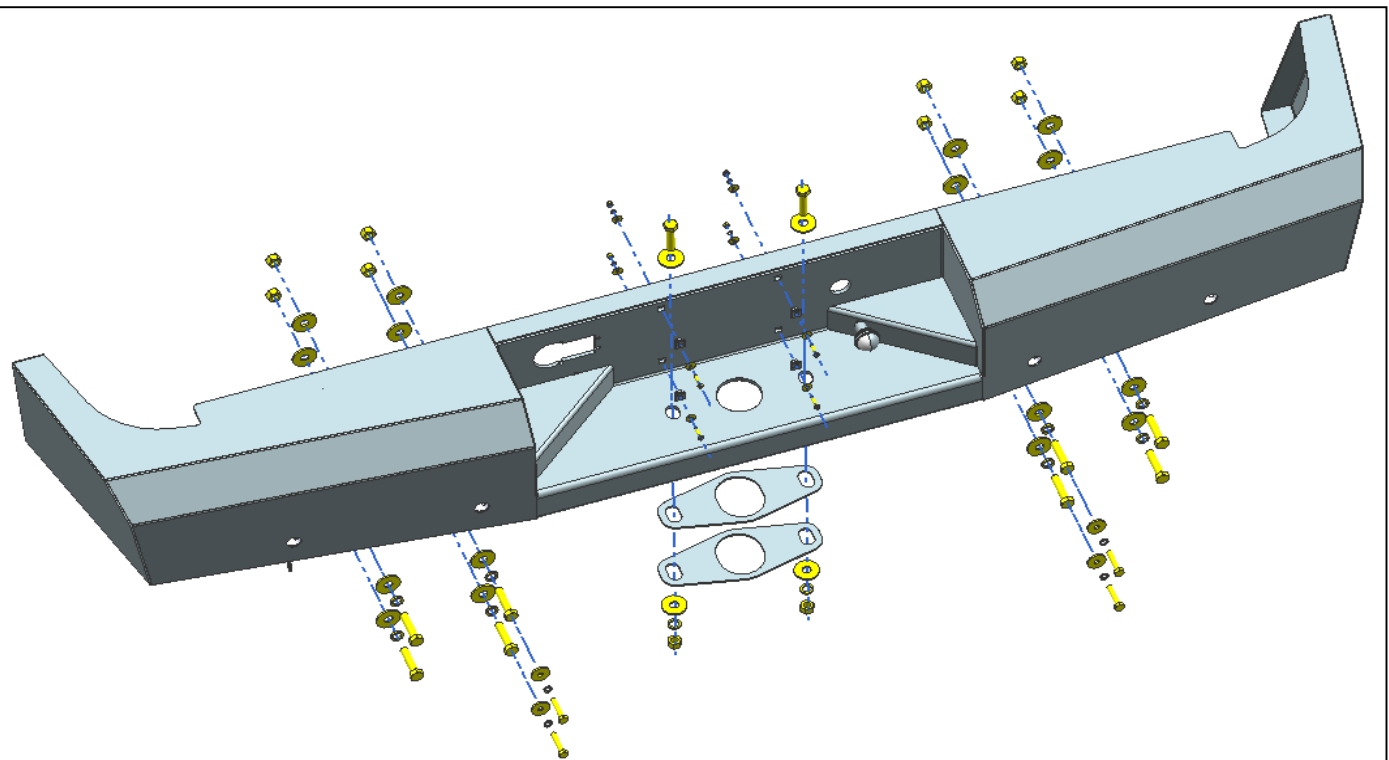
1 866 638 4870



POLISHED STAINLESS STEEL – LIMITED LIFETIME  
POWDER COATED BLACK – 3 YEARS

### PARTS LIST:

Qty	Part Description	Qty	Part Description
1	Replacement Rear Bumper	1	License Plate Light
20	12x37x3mm Flat Washers	10	12mmx50mm Hex Bolts
10	12mm Hex Nuts	10	12mm Lock Washers
4	8mmx40mm Hex Bolts	4	8x28x3mm Flat Washers
4	8mm Lock Washers	2	Spacers
2	License Plate Light wiring	4	Plastic Plugs
4	5mm Lock Washers	8	5x15x1.2mm Flat Washers
4	5x20mm Phillips Screws	4	5mm Hex Nuts
8	4x10mm Button Head Allen Bolts	1	Allen Wrench
4	Centering foam washers	4	Retaining rings
4	Rubber Sensor Plugs		



**INSTALLATION PROCEDURE:**

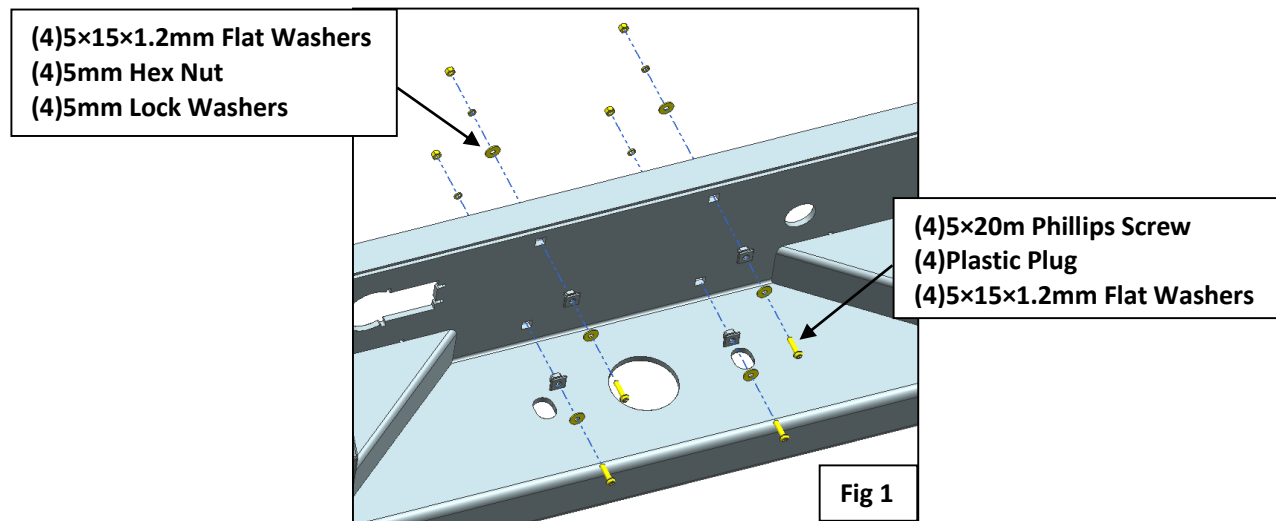
**BUMPER IS HEAVY, ASSISTANCE IS HIGHLY RECOMMENDED TO AVOID POSSIBLE INJURY OR DAMAGE TO THE VEHICLE.**

**Vehicle Preparation**

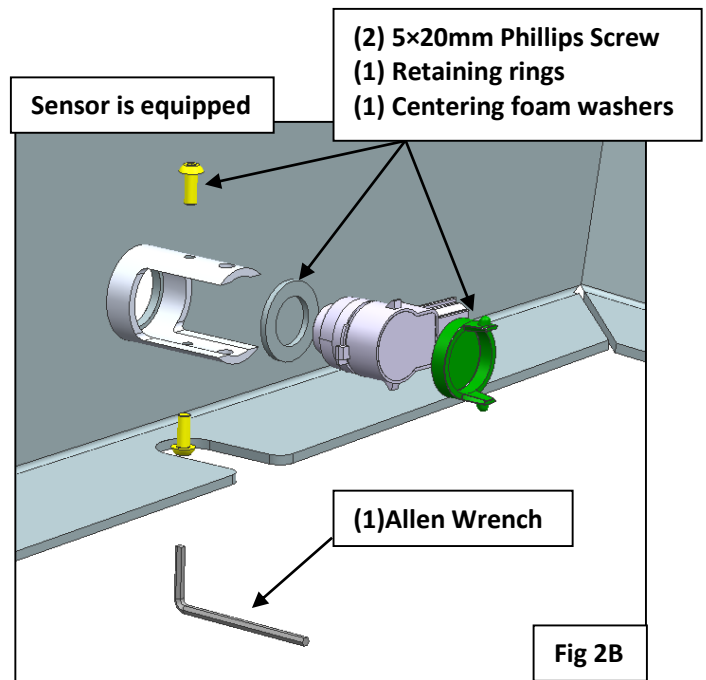
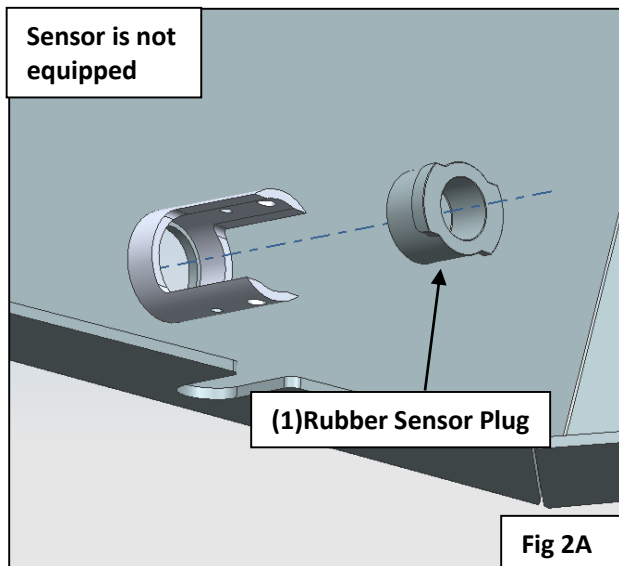
1. Disconnect the trailer and back-up sensor harness (if applicable) from the bumper.
2. Unplug the OEM license plate light from the housing and secure to the vehicle.
3. Remove license plate (to reveal two mounting bolts).
4. Remove the two mounting bolts exposed by the license plate.
5. Remove the two bolts per side holding the bumper to the frame/hitch assembly.
6. Remove the OEM bumper by rotating backwards. The top must clear the boss located on the hitch under the plastic cover.
7. Remove the clips holding the trailer hitch plug from the bumper. This plug will be modified to fit the new bumper.

**Bumper Installation**

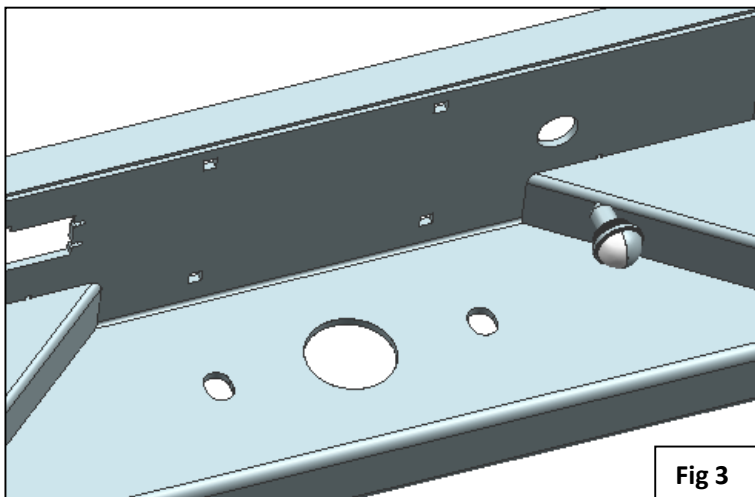
1. Attach the license plate to the Replacement Rear Bumper (**Fig 1**). Fasten the license plate with the hardware.



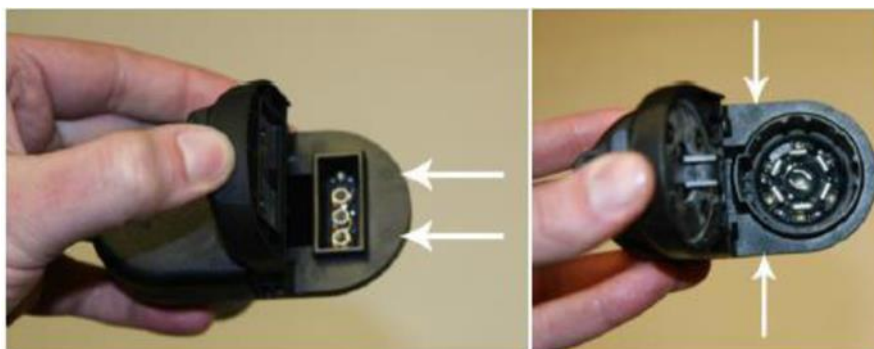
2. Install the Sensor Sleeves into sensor holes. If the sensor is not equipped, install provided plugs into the sleeves (**Fig 2A**). If the sensor is equipped, insert sensors from the back side, fasten each sensor with the hardware (**Fig 2B**).



3. Select the license plate light and push the light into the hole in the Bumper (Fig 3).



4. Drill The OEM Trailer Hitch Plug using a #16 Dill Bit (.177") in the locations pointed out with arrows below. Use care to drill directly in the center of the circles in the plastic (Fig 4).



(Fig 4) Drilling Location

5. Install the Bumper to the frame .

- a. Models with 8mm Welding Nut (Fig 4A):

(2)8×40mm Hex Bolts  
(2)8×28×3mm Flat Washers  
(2)8mm Lock Washers

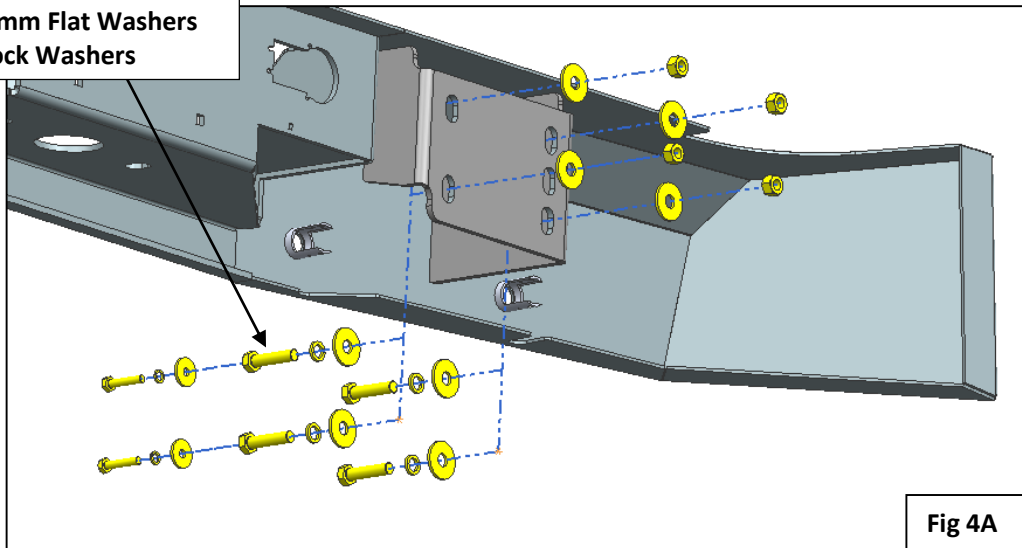


Fig 4A

b. Models without 8mm Welding Nut (Fig 4B):

(8)12×37×3mm Flat Washers  
(4)12×50mm Hex Bolts  
(4)12mm Hex Nuts  
(4)12mm Lock Nuts

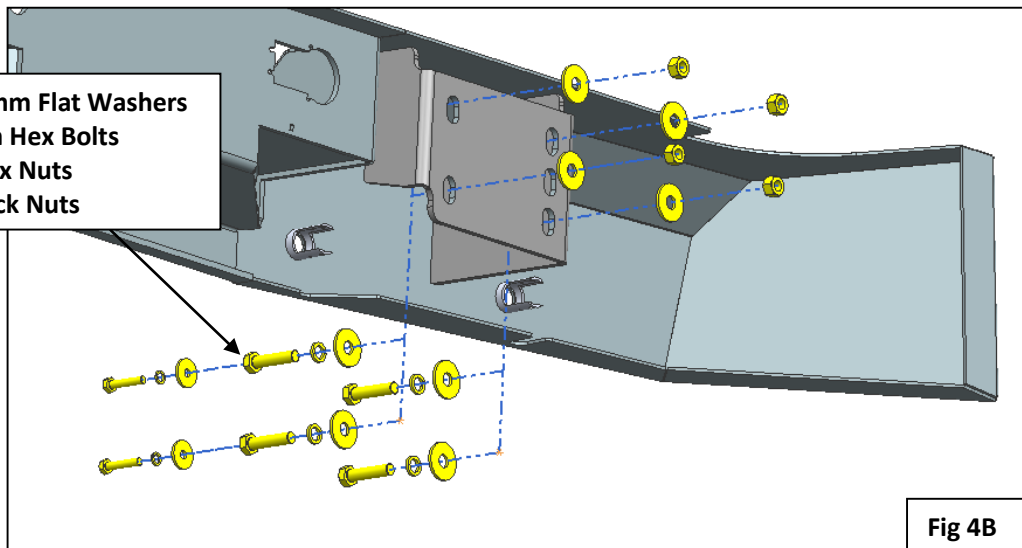


Fig 4B

6. Install the Rear Towing Hook to the Bumper (**Fig 5**). Select the Spacers, fasten the hook and the spacers with the hardware (Models with Rear Towing Hook only).

(2)12×37×3mm Flat Washers  
(1)12×50mm Hex Bolts  
(1)12mm Hex Nuts  
(1)12mm Lock Nuts

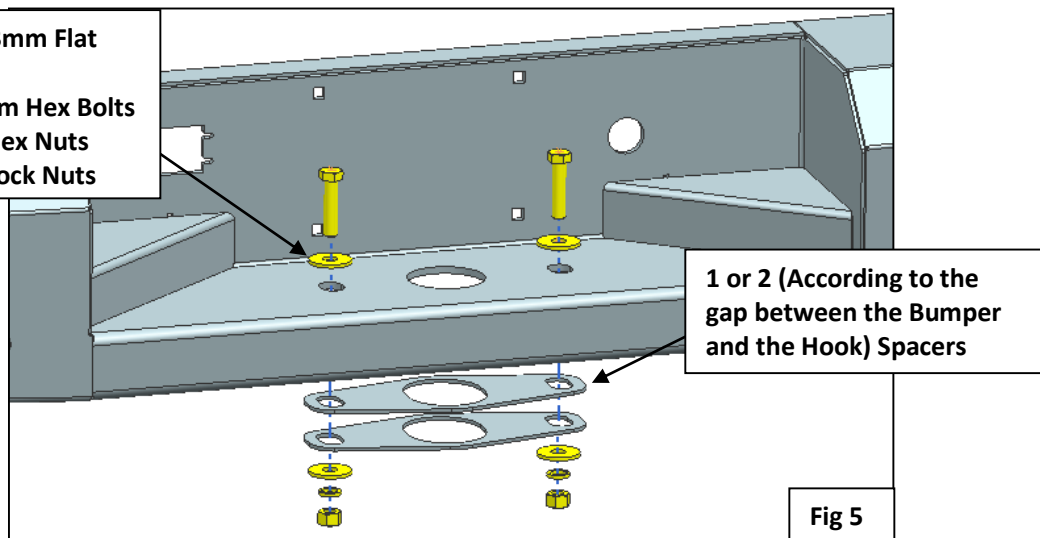


Fig 5

7. Level and adjust the bumper, make sure that all hardware is secure and tight.  
8. Installation is finished, pick up all tools.

**PRODUCT CARE**

- Periodically check the product to ensure all fasteners are tight and components are intact.
- Regular waxing is recommended to protect the finish of the product.
- **Use ONLY Non-Abrasive automotive wax.** Use of any soap, polish or wax that contains an abrasive is detrimental and can scratch the finish leading to corrosion.
- Aluminum polish may be used to polish small scratches and scuffs for **Stainless Steel finish.**
- Mild soap may be used to clean the product for both **Stainless Steel and Black finish.**

**FAQ's****1. Hardware's are not of correct size.**

*In GMC / Chevrolet truck model 2006 & up, customer needs to reuse the factory body bolts to install the bracket. If your vehicle is not GMC / Chevrolet 2006 & up, ensure that holes are not partially covered with any plastic grommet or rust? If it is, remove the plastic grommet & rust from the thread holes & re-try the installation.*

**2. Mounting Bracket are not getting Installed properly.**

*In some cases Illustration images shown in Installation manual may not be the exactly same as per actual vehicle images ,also if Driver / Passenger side mounting brackets are very identical in the design, suggest referring Parts Identification guide to avoid fitment issue.*

**3. Products are thumping / rattling after installation.**

*Ensure that all required mounting brackets / hardware's are installed & tighten correctly. Suggest using white lithium / regular grease between the metal to metal contact surfaces.*

**4. Side Bar is not aligning with vehicle / Step Pads are not aligning with vehicle doors.**

*Side bar may be interchanged or mounting brackets are not installed at the correct position in the vehicle. Refer Parts identification guide.*

**5. Missing / Excess Hardware.**

*Recheck hardware count as per the part list.*

**6. Product not installing properly.**

*Ensure make model year, cab length and bed size of your vehicle is listed in the application. All installation steps are followed correctly.*

Check out these other TrailFX Products!!

www.TrailFX.com



**SIDE BAR**



**HEADACHE RACKS**



**RUNNING BOARDS**



**ROCKER GUARDS**

Keystone Automotive Operations Inc. (KAO) warrants this product to be free of defects in material and workmanship at the time of purchase by the original retail consumer. KAO disclaims any other warranties, express or implied, including the warranty of fitness for a particular purpose or an intended use. If the product is found to be defective, KAO may replace or repair the product at our option, when the product is returned prepaid, with proof of purchase. Alteration to, improper installation, or misuse of this product voids the warranty. KAO's liability is limited to repair or replacement of products found to be defective, and specifically excludes liability for any incidental or consequential loss or damage.