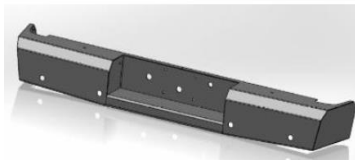




# Replacement Rear Bumper

Part No. FX1015



Fits: 2017 - 2018

Ford Superduty



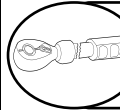
ASSISTANCE IS RECOMMENDED.



REMOVE CONTENTS FROM BOX. VERIFY ALL PARTS ARE PRESENT.



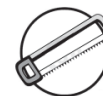
READ INSTRUCTIONS CAREFULLY BEFORE STARTING INSTALLATION.



DO NOT OVER TORQUE. STANDARD OPERATING LOAD FOR TIGHTEN BODY MOUNT NUTS & BOLTS VARIES FROM 45 TO 65 FOOT POUND.



60-180 min



Cutting Required



Drilling Not Required



[support@trailfx.com](mailto:support@trailfx.com)



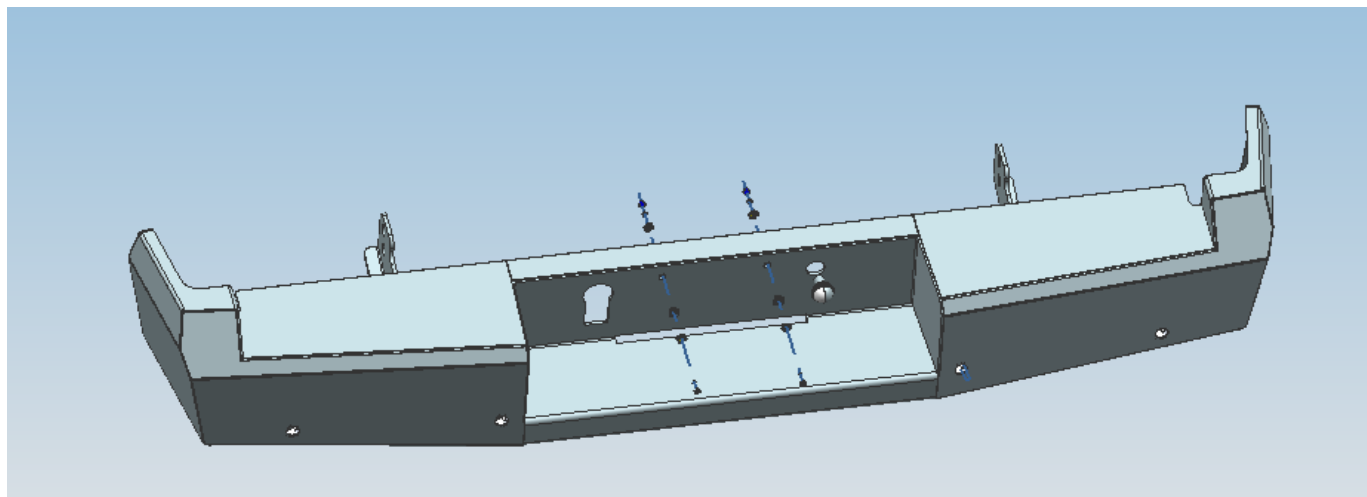
1 866 638 4870



POLISHED STAINLESS STEEL – LIMITED LIFETIME  
POWDER COATED BLACK – 3 YEARS

## PARTS LIST:

Qty	Part Description	Qty	Part Description
1	Replacement Rear Bumper	8	4x10mm Button Head Allen Bolts
2	5mmx20mm Philips Screws	1	Allen Wrench
4	Plastic Plugs for License Plate	4	Rubber Sensor Plugs
2	5mm Hex Nuts	1	License Plate Light
2	5mm Lock Washers	2	Wiring Harnesses
4	5mmx15mmx1.2mm Flat Washer	4	Foam Spacer Washer 20mm x 10mm
4	Sensor Hole Plugs	4	Sealing Washer
4	Retaining Ring		



## INSTALLATION PROCEDURE

**BUMPER IS HEAVY, ASSISTANCE IS HIGHLY RECOMMENDED TO AVOID POSSIBLE INJURY OR DAMAGE TO THE VEHICLE.**

### Vehicle Preparation

1. Remove the license plate from the bumper, **(Figure 1)**. Unplug the wiring harness leading to the bumper and move harness away from bumper.
2. Place blocks or jack stands under the bumper to support it during mounting bolt removal. Once the bumper has been safely supported, remove the (2) factory bolts attaching the bottom of the bumper (step area) to the receiver hitch, **(Figure 1)**. Next, remove the factory hardware attaching the bumper to the bumper brackets and remove the bumper assembly, **(Figure 2)**. **WARNING!** Assistance is required to hold the bumper in place during hardware removal to prevent bumper from falling.

3. Next, remove both bumper brackets from the frame, **(Figure 3)**.
4. Remove sensors, (if equipped), from bumper. Release the clips securing the trailer plug and remove the plug. Remove the license plate lights and wiring harness from the bumper. Next, remove the spare tire plug lock if equipped, **(Figure 4)**.
5. Reinstall the spare tire hole plug lock, license plate lights and trailer plug into the Bumper, **(Figure 5)**. **NOTE:** Use a flat blade screwdriver to carefully pry out the metal clips on the trailer plug to grab the edge of the opening if necessary.
6. Determine if the vehicle is equipped with sensors. **NOTE:** It may be necessary or easier to install sensors, (if equipped), and harness before installing the Bumper.

**Models without bumper sensors:**

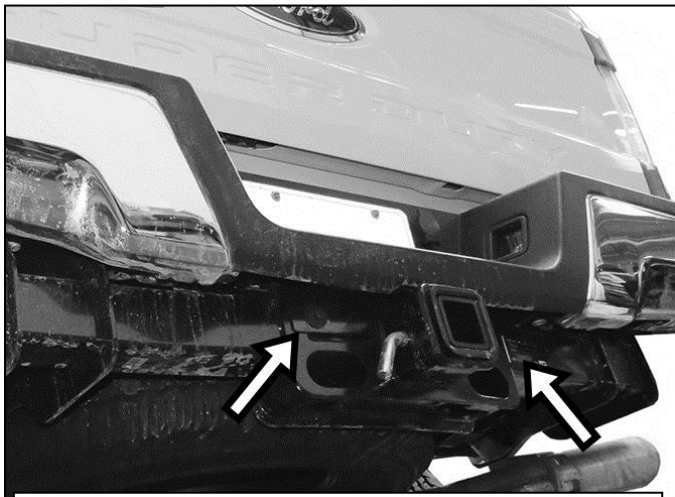
- a. Select the included (4) Rubber Plugs, **(Figure 6)**.
- b. From behind bumper, push plugs into sensor mounting sleeves, **(Figure 6)**. Screws have been provided to lock the plugs into the sleeves. Use is optional.

**Models with bumper mounted sensors:**

- a. Select (1) sensor. Test fit sensor in mounting sleeve. It may be necessary to cut or grind off the tabs on the sides of the sensor to fit into the sleeve.
- b. Remove the seal from the end of the sensor, **(Figure 7)**. Slide the included larger Sensor Seal over front of the sensor.

Insert the sensor with Seal into sensor mount, **(Figure 8)**.

- c. Place the thick Foam Spacer over end of the sensor. Push Sensor Retaining Clip into sensor mount and lock into mounting holes, **(Figure 8)**.
  - d. Repeat previous Steps to install remaining sensors.
  - e. Install wiring harness for sensors.
  - f. **Optional:** Secure each sensor to the socket with (2) 4mm x 10mm Button Head Screws, **(Figure 6)**. **IMPORTANT:** Sensors fit snug in sockets. The 4mm Screws are used to apply slight pressure to lock the sensors in place. Tighten both screws evenly until they touch the sensor body only. Do not overtighten screws or damage to sensors will result.
7. Attach the wiring harness to the sensors, lights and trailer plug as equipped.
  8. With assistance, hold the Bumper assembly up to the frame. Temporarily support the weight of the Bumper. **WARNING:** To avoid possible injury or damage to the vehicle, do not proceed until the bumper is fully and safely supported.
  9. Reuse the factory hardware to attach the passenger/right side of the Bumper to the frame, **(Figure 9)**. Repeat this Step to attach the driver/left side of the Bumper to the frame. Snug but do not fully tighten hardware at this time.
  10. Level and adjust the bumper and slowly lower the tailgate and check for clearance. Adjust the bumper as required and fully tighten all hardware to 65-70ft-lbs.
  11. Do periodic inspections to the installation to make sure that all hardware is secure and tight.
  12. Use the included (2) push-in plugs to attach the license plate to the Bumper, **(Figure 10)**.
  13. Plug in the wiring harness on the bumper to the main harness on the vehicle.
  14. Do periodic inspections to the installation to make sure that all hardware is secure and tight.



**(Fig 1) Remove the (2) bolts attaching the bottom of the step to the receiver hitch if equipped**



**(Fig 2) Remove the factory hex nuts attaching the bumper to the brackets (arrow)**

**WARNING!** Do not crawl under bumper unless the bumper is properly supported on blocks or stands or the bumper may fall.

**WARNING!** Do not remove bumper bolts unless the bumper is properly supported on blocks or stands or the bumper may fall.



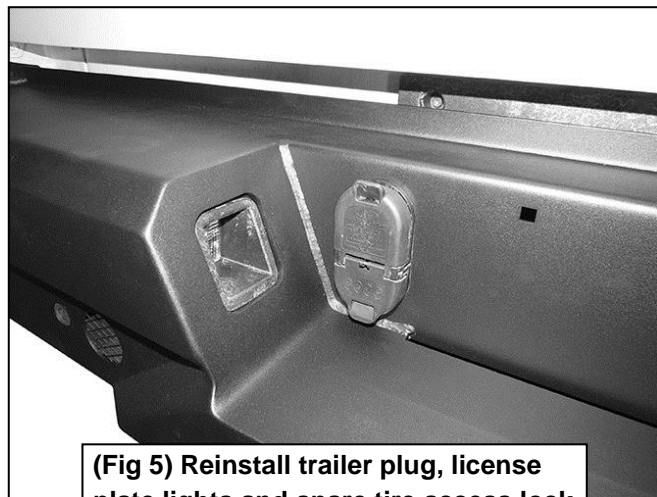
**(Fig 3) Remove bumper bracket from frame**



**(Fig 4) Remove sensors, wire harness, license plate lights, trailer plug and spare tire access lock (pictured) if equipped**

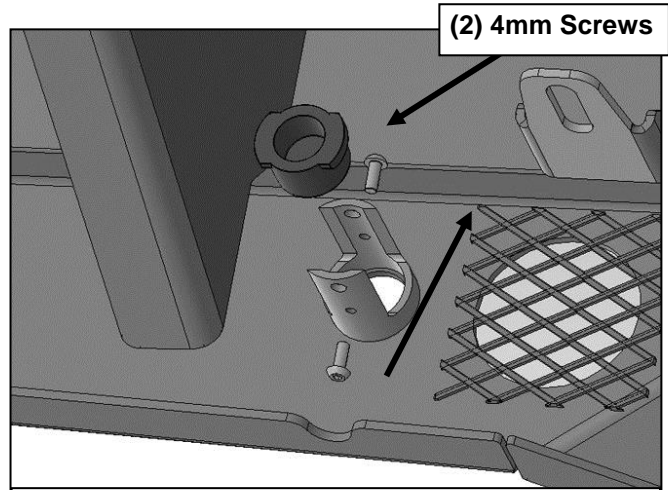


**(Fig 4) Remove sensors, wire harness, license plate lights, trailer plug and spare tire access lock (pictured) if equipped**



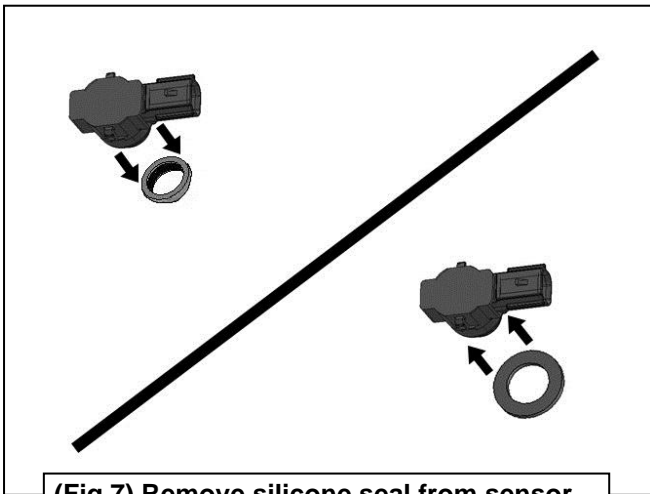
**(Fig 5) Reinstall trailer plug, license plate lights and spare tire access lock**

**NOTE:** Sensor plugs fit snug in sockets. Use of the 4mm Screws is optional. 4mm Screws can also be used to apply slight pressure to lock the sensors in place or to aim the sensor. Tighten both screws evenly until they touch the sensor body only. Do not overtighten screws or damage to sensors will result.

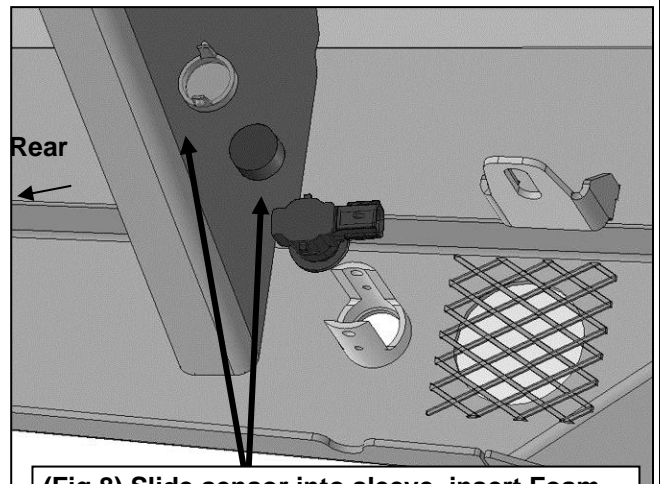


(Fig 6) Push sensor hole plug into mounting sleeve. Use 4mm Screws to lock sensor in place.

**WARNING!** Do not crawl under bumper unless the bumper is properly supported on blocks or stands or the bumper may fall.



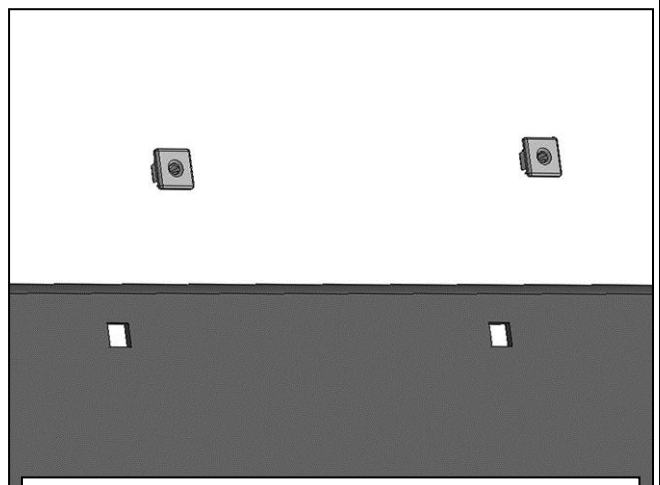
(Fig 7) Remove silicone seal from sensor. Slide large Seal over end of sensor (arrow)



(Fig 8) Slide sensor into sleeve, insert Foam Spacer and Clip to lock sensor in sleeve



(Fig 9) Reuse factory hardware to attach passenger/right Bumper to side of frame



(Fig 10) Push plugs into holes for license plate

**PRODUCT CARE**

- Periodically check the product to ensure all fasteners are tight and components are intact.
- Regular waxing is recommended to protect the finish of the product.
- **Use ONLY Non-Abrasive automotive wax.** Use of any soap, polish or wax that contains an abrasive is detrimental and can scratch the finish leading to corrosion.
- Aluminum polish may be used to polish small scratches and scuffs for **Stainless Steel finish.**
- Mild soap may be used to clean the product for both **Stainless Steel and Black finish.**

**FAQ's****1. Hardware's are not of correct size.**

*In GMC / Chevrolet truck model 2006 & up, customer needs to reuse the factory body bolts to install the bracket. If your vehicle is not GMC / Chevrolet 2006 & up, ensure that holes are not partially covered with any plastic grommet or rust? If it is, remove the plastic grommet & rust from the thread holes & re-try the installation.*

**2. Mounting Bracket are not getting Installed properly.**

*In some cases Illustration images shown in Installation manual may not be the exactly same as per actual vehicle images ,also if Driver / Passenger side mounting brackets are very identical in the design, suggest referring Parts Identification guide to avoid fitment issue.*

**3. Products are thumping / rattling after installation.**

*Ensure that all required mounting brackets / hardware's are installed & tighten correctly. Suggest using white lithium / regular grease between the metal to metal contact surfaces.*

**4. Side Bar is not aligning with vehicle / Step Pads are not aligning with vehicle doors.**

*Side bar may be interchanged or mounting brackets are not installed at the correct position in the vehicle. Refer Parts identification guide.*

**5. Missing / Excess Hardware.**

*Recheck hardware count as per the part list.*

**6. Product not installing properly.**

*Ensure make model year, cab length and bed size of your vehicle is listed in the application. All installation steps are followed correctly.*

Check out these other TrailFX Products!!

www.TrailFX.com



Keystone Automotive Operations Inc. (KAO) warrants this product to be free of defects in material and workmanship at the time of purchase by the original retail consumer. KAO disclaims any other warranties, express or implied, including the warranty of fitness for a particular purpose or an intended use. If the product is found to be defective, KAO may replace or repair the product at our option, when the product is returned prepaid, with proof of purchase. Alteration to, improper installation, or misuse of this product voids the warranty. KAO's liability is limited to repair or replacement of products found to be defective, and specifically excludes liability for any incidental or consequential loss or damage.