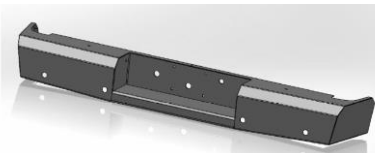




# Replacement Bumper

Part No. FX3022



Fits: 2015 - Current

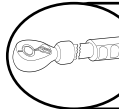
GMC Sierra 2500 / 3500 HD



REMOVE CONTENTS FROM BOX. VERIFY ALL PARTS ARE PRESENT.



READ INSTRUCTIONS CAREFULLY BEFORE STARTING INSTALLATION.



DO NOT OVER TORQUE. STANDARD OPERATING LOAD FOR TIGHTEN BODY MOUNT NUTS & BOLTS VARIES FROM 45 TO 65 FOOT POUND.



60-120 min



Cutting Not Required



Drilling Required



support@trailfx.com



1 866 638 4870



POLISHED STAINLESS STEEL – LIMITED LIFETIME  
POWDER COATED BLACK – 3 YEARS

### PARTS LIST:

Qty	Part Description	Qty	Part Description
1	Replacement Bumper	1	Hardware Kit

### Tools Required

Socket Wrench with Extension (Ratcheting wrenches may also be convenient)	Floor jack, jack stands, and/or a wood block.
7mm, 10mm, 15mm, 18mm, 19mm, 3/4 Sockets and Box End Wrenches	9/16 drill bit w/ drill
Flat head screw drivers	

### INSTALLATION PROCEDURE:

#### Vehicle Preparation

**Note: Save all OEM parts until installation is complete!**

1. Open hood and locate the twelve push pins on radiator cover. Using a flathead screwdriver or similar tool, pull the head of the push pins up, remove push pin and lift radiator cover off. This will allow access to top Grille bolts (Ref. Figure 1).

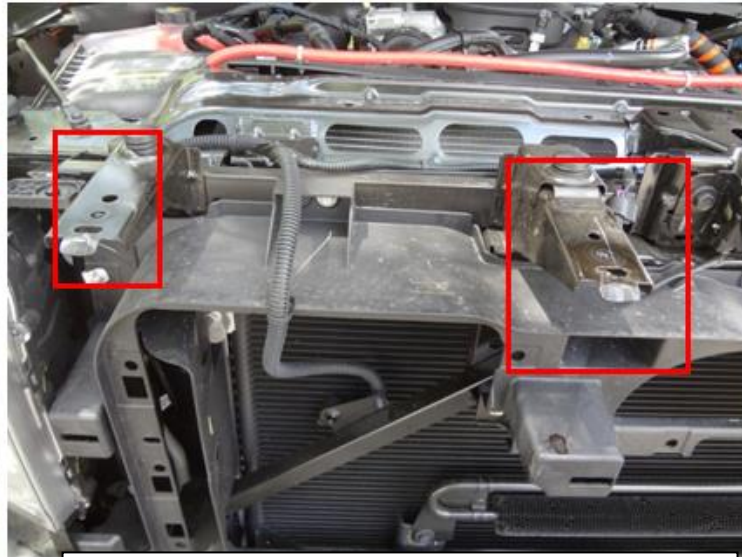


Figure 1

2. Remove the fasteners connecting the grille to the frame with a 10mm socket. Four bolts, are located at the top of the grille, two on each side (Ref. Figure 2a-b). There are multiple clips holding the grill to the vehicle.



**Figure 2a-bolts on LH side**



**Figure 2b-grill removed-bolt locations RH**



**Figure 2c - Example of Clip Holding Grill**

3. Disconnect electrical harness (Ref. Figure 3a) from vehicle and remove tow hooks. Tow hooks are mounted with one cross bolt through the side and a bolt through the bottom of the frame (Ref. Figure 3b).



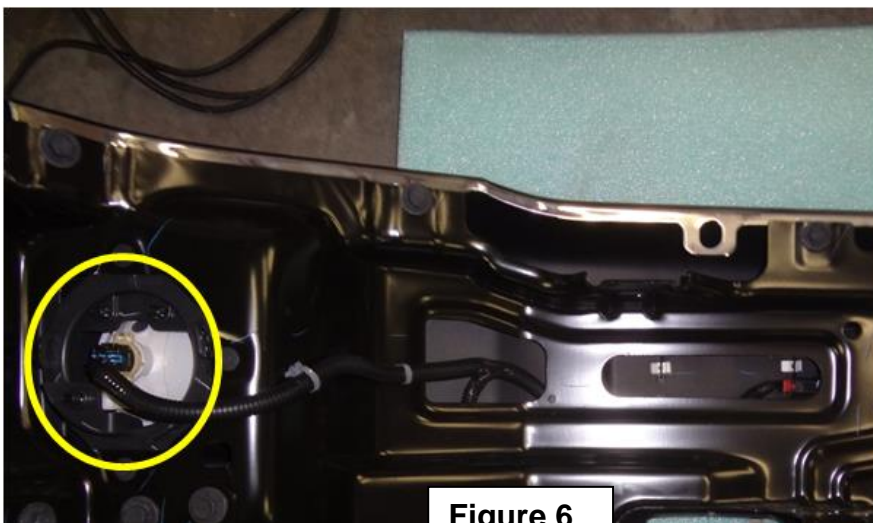
**Figure 3a (Tow Hook & OEM Mounting Bracket)**

4. Remove bolts connecting bumper to mounting bracket (Ref. Figure 3a circles). There are two bolts on each side which requires a socket wrench with an extension to easily reach from top and bottom. (Ref. Figure 3a-b). Carefully pull bumper away from vehicle.



**Figure 3b (Bolt Access for Top Bolt on Mounting Bracket)**

5. Remove the fasteners connecting the OEM mounting bracket to the frame. Using a socket/wrench remove four bolts from the front of bracket connected to the bumper. Repeat process on each side of vehicle.
6. Remove OEM electrical harness from bumper. Disconnect harness from fog lights and sensors. Pop out the three plastic clips holding fog lights to fog light housing and carefully pull away, the plastic clips are indicated by a circle. Unbolt bumper support frames as necessary to more easily access sensors (Ref. Figure 6).

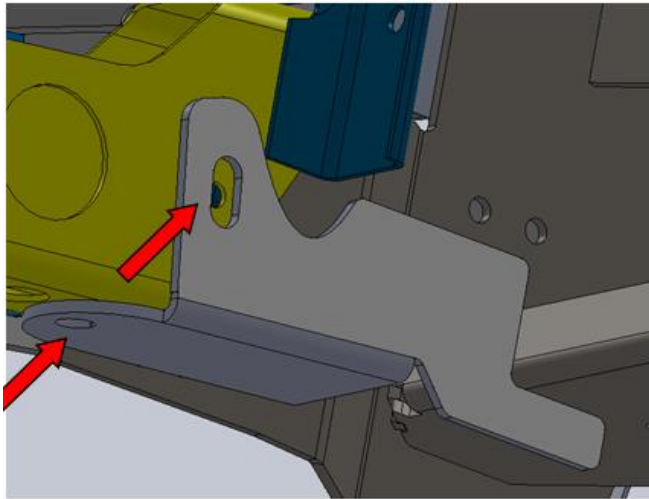


**Figure 6**

## Bumper Installation

**NOTE: PLEASE READ THE ENTIRE MANUAL BEFORE ATEMPTING INSTALLATION. Ignoring these steps will increase your probability of scratching the vehicle during product installation!**

1. Remove the bumper from the shipping carton. Lay all items out on a blanket to prevent damage to the powder coating.
2. **OPTIONAL:** If you wish to retain the stock fog lamps, remove the lights from the stock bumper and reinstall using OEM hardware in the provided brackets behind the protective mesh. It may be necessary to remove the adjuster screw prior to installation. With the fog light clipped in the bracket, reinstall the adjuster screw to clamp the light in place.
3. **OPTIONAL:** If you purchased a winch for your bumper, install it at this time using the manual provided with your winch. Control box may have to be removed before installation of winch. Control box is then slid back on from side and bolted down.
4. Lift bumper and slide bumper mounting flanges over the outside of the vehicle frame rails, aligning the slots in the mounts with the holes in the sides of the frame rails.
5. Use provided hardware to mount your bumper. Note: You may need to drill frame holes slightly larger to improve fitment.



6. Adjust the bumper to achieve good visual alignment.
7. Trim inner-fender liners to match bumper if desired.



**PRODUCT CARE**

- Periodically check the product to ensure all fasteners are tight and components are intact.
- Regular waxing is recommended to protect the finish of the product.
- **Use ONLY Non-Abrasive automotive wax.** Use of any soap, polish or wax that contains an abrasive is detrimental and can scratch the finish leading to corrosion.
- Aluminum polish may be used to polish small scratches and scuffs for **Stainless Steel finish.**
- Mild soap may be used to clean the product for both **Stainless Steel and Black finish.**

**FAQ's****1. Hardware's are not of correct size.**

*In GMC / Chevrolet truck model 2006 & up, customer needs to reuse the factory body bolts to install the bracket. If your vehicle is not GMC / Chevrolet 2006 & up, ensure that holes are not partially covered with any plastic grommet or rust? If it is, remove the plastic grommet & rust from the thread holes & re-try the installation.*

**2. Mounting Bracket are not getting Installed properly.**

*In some cases Illustration images shown in Installation manual may not be the exactly same as per actual vehicle images ,also if Driver / Passenger side mounting brackets are very identical in the design, suggest referring Parts Identification guide to avoid fitment issue.*

**3. Products are thumping / rattling after installation.**

*Ensure that all required mounting brackets / hardware's are installed & tighten correctly. Suggest using white lithium / regular grease between the metal to metal contact surfaces.*

**4. Side Bar is not aligning with vehicle / Step Pads are not aligning with vehicle doors.**

*Side bar may be interchanged or mounting brackets are not installed at the correct position in the vehicle. Refer Parts identification guide.*

**5. Missing / Excess Hardware.**

*Recheck hardware count as per the part list.*

**6. Product not installing properly.**

*Ensure make model year, cab length and bed size of your vehicle is listed in the application. All installation steps are followed correctly.*

Check out these other TrailFX Products!!

www.TrailFX.com



Keystone Automotive Operations Inc. (KAO) warrants this product to be free of defects in material and workmanship at the time of purchase by the original retail consumer. KAO disclaims any other warranties, express or implied, including the warranty of fitness for a particular purpose or an intended use. If the product is found to be defective, KAO may replace or repair the product at our option, when the product is returned prepaid, with proof of purchase. Alteration to, improper installation, or misuse of this product voids the warranty. KAO's liability is limited to repair or replacement of products found to be defective, and specifically excludes liability for any incidental or consequential loss or damage.