



HAMMERHEADARMOR.COM | 1-800-HHTOUGH



 HammerheadArmor  Hammerheadarmor  HammerheadOff-RoadArmor

# **2024-20XX CHEVY SILVERADO 2500 RECON/FRONTIER SERIES TALL PRERUNNER INSTALLATION INSTRUCTIONS**



**600-56-1176/1201**

## **PLEASE READ BEFORE YOU START**

TO ENSURE A QUALITY INSTALLATION READ ALL INSTRUCTIONS AND WARNINGS THOROUGHLY BEFORE BEGINNING ANY WORK. THE INSTRUCTIONS ASSUME A CERTAIN AMOUNT OF MECHANICAL ABILITY AND ARE NOT INTENDED FOR SOMEONE UNFAMILIAR WITH AUTO REPAIR. FAILURE TO FOLLOW THESE INSTRUCTIONS COULD LEAD TO PERSONAL INJURY, DEATH, AND/OR PROPERTY DAMAGE.

HAMMERHEADARMOR.COM | 1-800-HHTOUGH

# SAFETY

## READ ALL SAFETY INSTRUCTIONS BEFORE INSTALLATION

If there are any questions, call 1-855-HHTOUGH

### PRODUCT INSTALLATION SAFETY

- Follow all instructions for proper assembly.
- Wear the appropriate personal protective equipment.
- Exercise care when lifting components.
- Ensure all fingers and body parts are away from pinch points.
- Exercise care when trimming and cutting components. Failure in doing so may cause unforeseen damage.
- Only use the hardware supplied for installation.
- Use appropriate torque for bolts. (Use the wet torque values if you are using Loctite or Anti-Seize, if not use the dry torque values)

Suggested Torque Values for Standard Hex Bolts (ft/lb)				
Bolt Size	Grade 5		Grade 8	
	Dry	Wet	Dry	Wet
1/4-20	8	6.3	12	9
5/16-18	17	13	25	18
3/8-16	30	23	45	35
7/16-14	50	35	70	55
1/2-13	75	55	110	80
9/16-12	110	80	150	110
5/8-11	150	110	220	170
3/4-10	260	200	380	280
7/8-9	863	648	606	303
1-8	1295	971	909	454

Suggested Torque Values for Metric Hex Bolts (ft/lb)				
Bolt Size	Grade 8.8		Grade 10.9	
	Dry	Wet	Dry	Wet
M6	10.4	7.8	15	11.2
M8	25.4	19.1	37.6	27.3
M10	50	38	72	54
M12	88	66	126	94
M14	141	106	201	150
M16	218	164	312	233
M18	301	226	431	323
M20	426	319	609	457
M22	580	435	831	624
M24	736	552	1052	789

### PRODUCT USAGE SAFETY

- Do not alter or modify product in any way. Doing so may void warranty or lead to personal injury. (Visit our website for warranty details)
- Re-torque hardware at each oil change.
- In the event of a collision, inspect product and mounts for damage before usage.
- After vehicle recovery or winching, inspect mounts and hardware.
- For proper winch usage refer to the winch manufacturer's guidelines.

#### California Proposition



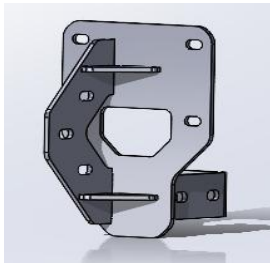
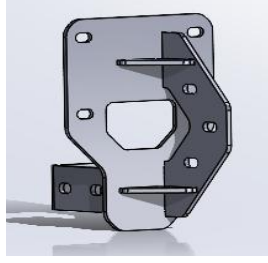
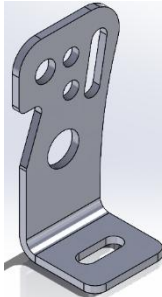
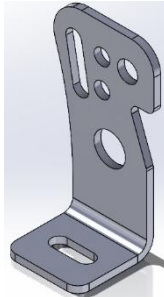
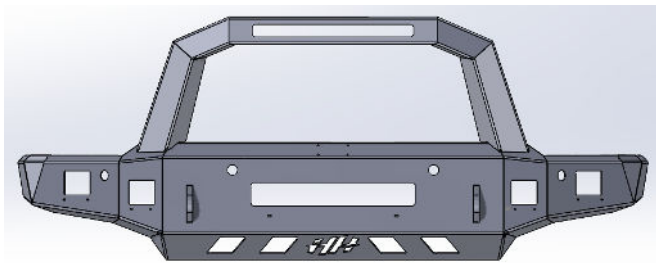
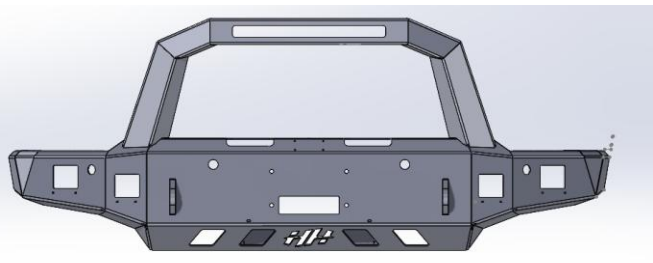
#### 65 Warning

**WARNING:** This product contains chemicals known to the state of California to cause cancer and birth defects or other reproductive harm.

For more information visit: [www.P65warnings.ca.gov](http://www.P65warnings.ca.gov)

**I. PARTS LIST**

*Note: Only one bumper is shipped. Check the product number given to ensure correct bumper is received.*

ITEM 1	RIGHT FRAME MOUNT WELDMENT	QTY. 1	ITEM 2	LEFT FRAME MOUNT WELDMENT	QTY. 1
					
ITEM 3	RECON: RIGHT LIGHT BAR MOUNT	QTY. 1	ITEM 4	RECON: LEFT LIGHT BAR MOUNT	QTY. 1
					
ITEM 3	RECON SERIES TALL PRERUNNER (1176) FRONTIER SERIES TALL PRERUNNER (1201)				QTY. 1
<b>1176</b> 			<b>1201</b> 		
ITEM 5	INSTALL KITS				QTY.1
<div>✓ <b>INSTALL KIT #353</b></div> <div>(60K-56-0058) x1    (60H-56-0059) x1</div>					

10/24/2024

REV 00

**REMOVE CONTENTS FROM BOX AND VERIFY ALL PARTS ARE PRESENT.**

If there are any questions, call 1-855 HHTOUGH or email [HHORDERS@hammerheadarmor.com](mailto:HHORDERS@hammerheadarmor.com)

**II. TOOL LIST**

- ✓ A helper or crane
- ✓ Basic tool set
- ✓ Blue masking tape
- ✓ 15mm socket
- ✓ 18mm wrench and socket
- ✓ ¾" socket
- ✓ Ratchet
- ✓ 6" ratchet extension
- ✓ 12" ratchet extension

**III. VEHICLE PREPARATION**

1. Park vehicle on level surface.
2. Engage parking brake, disconnect battery, and chock the wheels.
3. Using blue masking tape, mask along the profile of your vehicle above the bumper. This will help protect your vehicle from any accidental scratches.

**IV. REMOVAL OF OE BUMPER**

1. Disconnect all wiring harness connectors attached to the bumper.

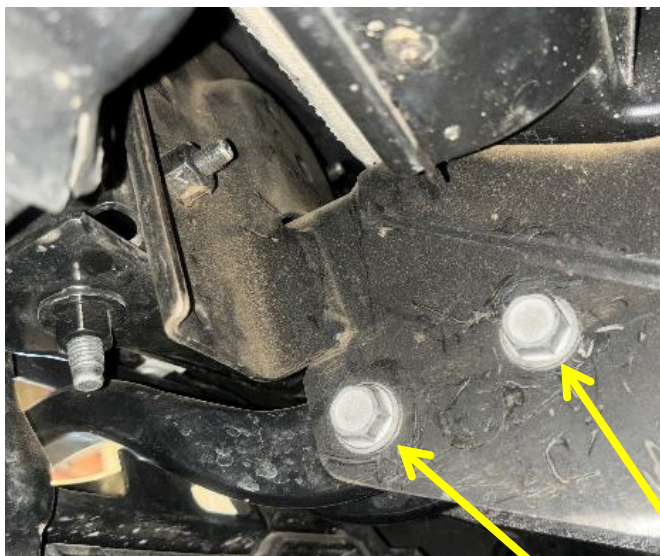




2. Using a 15mm socket, remove the side brace attaching the bumper to the frame. Set aside it will not be reused. (Both sides)

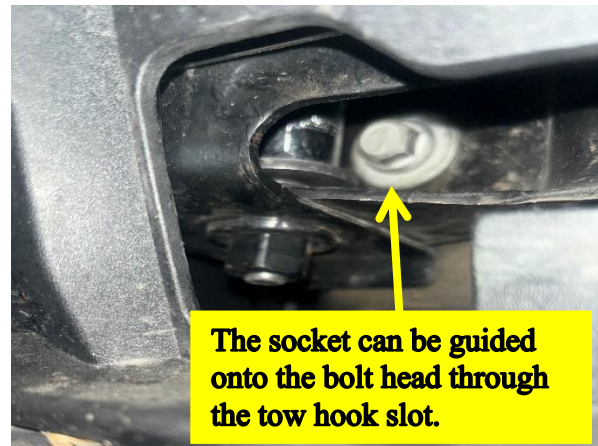
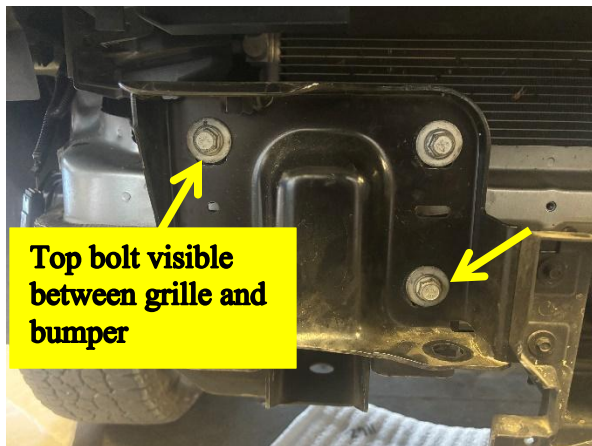


3. Using an 18mm socket and wrench, remove the bolts attaching the tow hook to the frame. Set hardware aside for reuse. (Both sides)



4. Using an 18mm socket, remove the two bolts attaching the mounts to the frame and set aside as it will not be reused. (Both sides)

**NOTE: TO REMOVE THE BOLTS YOU WILL NEED A 6" EXTENSION AND 12" EXTENSION. PLACE YOUR EXTENSION THROUGH THE GRILLE (AS SHOWN BELOW) USING THE SHORT EXTENSION FOR THE TOP BOLT AND BOTH FOR THE BOTTOM.**



5. Remove the OE bumper from vehicle and set it aside as it will not be reused.

**NOTE: ENSURE ALL WIRING HARNESES ARE UNPLUGGED BEFORE REMOVAL.**

**NOTE: FOR ZR2 MODELS, REMOVAL OF THE OE SKID PLATE IS REQUIRED. SET ASIDE IT WILL NOT BE USED LATER.**

- Using a 15mm socket, remove the four bolts attaching the OE brackets to the frame. Set aside hardware for reuse. (Both sides)

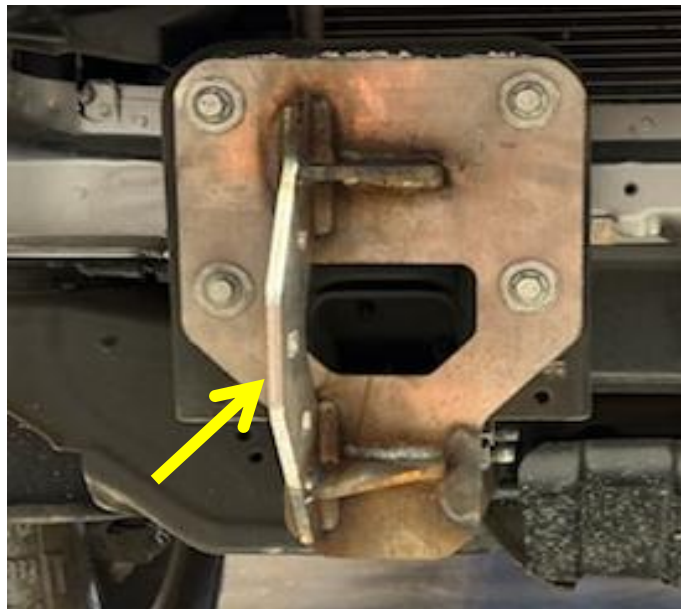


## V. INSTALLATION OF HAMMERHEAD BUMPER

**Note:** For Hammerhead bumpers, it is recommended to install any lights onto the bumper before mounting it to the vehicle.

- Using a 15mm socket, install the four bolts attaching the frame to the mount weldment using the OE hardware from the mount and tow hook and tighten all bolts.

**NOTE: FRAME MOUNT WELDMENT PLATE SHOULD BE PLACED TO THE OUTER SIDE OF THE TRUCK (PASSENGER SIDE SHOWN).**





2. Using a hoist, align the bumper slots with the frame mount slots. Once aligned, place the top and bottom bolts through the slots with a weldnut tab D on the inner part of the plate (driver side shown). Start the top bolt but do not tighten, install and tighten the bottom bolt using a  $\frac{3}{4}$ " socket. Tilt the bumper forward and install the middle bolt.



3. Once all bolts are started, push the bumper back against the vehicle and tilt the bumper forward to ensure an even spacing between the bumper and the vehicle. Using a  $\frac{3}{4}$ " socket, tighten all the bolts to the recommended torque specs listed. (Page 2)

**NOTE: MEASURE THE GAP BETWEEN THE BUMPER AND GRILLE ON BOTH SIDES TO ENSURE EVEN SPACING.**







**Congratulations! Your product installation is now complete.  
Thank you for your purchase!**

10/24/2024

REV 00

HAMMERHEADARMOR.COM | 1-800-HHTOUGH