



HAMMERHEADARMOR.COM | 1-800-HHTOUGH



 HammerheadArmor  Hammerheadarmor  HammerheadOff-RoadArmor

2024-20XX CHEVY SILVERADO 1500

FRONTIER BUMPER

INSTALLATION INSTRUCTIONS



600-56-1137/1138/1150

HAMMERHEADARMOR.COM | 1-800-HHTOUGH

SAFETY

Know safety, no injury. Know injury, no safety. ~Author Unknown

If there are any questions, call 1-855-HHTOUGH

READ ALL SAFETY INSTRUCTIONS BEFORE INSTALLATION

- FOLLOW ALL INSTRUCTIONS FOR PROPER ASSEMBLY
- WEAR APPROPRIATE EYE PROTECTION
- EXERCISE CARE WHEN LIFTING COMPONENTS
- USE APPROPRIATE TORQUE FOR BOLTS
- RE-TORQUE HARDWARE AT EVERY OIL CHANGE.

Suggested Torque Values For Steel Grade 5 Standard Bolts		
BOLT DIAMETER (INCH)	THREADS PER INCH	TORQUE (POUND - FEET)
1/4	20	7
5/16	18	14
3/8	16	25
7/16	14	40
1/2	13	60
9/16	12	88
5/8	11	120
3/4	10	200
7/8	9	302
1	8	466

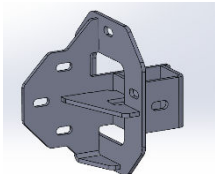
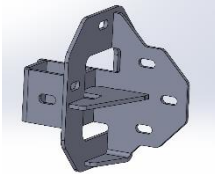
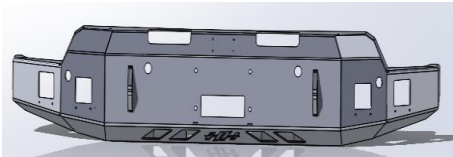

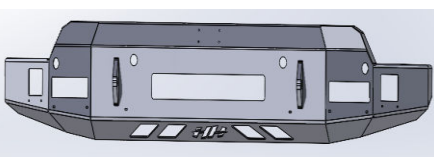
Suggested Torque Values For Steel Grade 8.8 Metric Bolts		
BOLT DIAMETER (mm)	THREAD PITCH (mm)	TORQUE (POUND-FEET)
6	1.0	7
8	1.25	16
10	1.5	32
12	1.75	55
14	2.0	88
16	2.0	140
18	2.5	195
20	2.5	275
22	2.5	375
24	3.0	475



WARNING: Cancer
and Reproductive Harm
www.P65Warnings.ca.gov

I. PARTS LIST

Note: Only one bumper is given. Check the product number given to ensure correct bumper variation is received.

ITEM 1	RIGHT FRAME MOUNT (PASSENGER SIDE)	QTY. 1	ITEM 2	LEFT FRAME MOUNT (DRIVER SIDE)	QTY. 1
					
ITEM 3	FRONTIER SERIES BUMPER (1137) FRONTIER SERIES BUMPER WITH FULL BRUSH GUARD (1138) FRONTIER SERIES BUMPER WITH TVI CAMERA CUTOUTS (1150)				QTY. 1
	1137 		1138 		1150 
ITEM 4	INSTALL KITS				QTY. 1
	<u>INSTALL KIT #336 (1137/1338)</u> (409-01-0125) x1 (601-56-6709) x2 (443-01-0086) x1 (601-56-2316) x4 (60K-56-0058) x1 (601-56-2711) x4 (307-13-0231) x4		<u>INSTALL KIT #345</u> (307-13-0231) x4 (601-56-2316) x4 (409-01-0125) x1 (601-56-6709) x2 (443-01-0086) x1 (60K-56-0057) x1 (443-10-0927) x1 (60K-56-0058) x1 (601-56-2711) x4		

REMOVE CONTENTS FROM BOX AND VERIFY ALL PARTS ARE PRESENT.

If there are any questions, call 1-855 HHTOUGH or email HHORDERS@hammerheadarmor.com

II. TOOL LIST

- ✓ A helper
- ✓ Basic tool set
- ✓ Blue masking tape
- ✓ Trim Tool
- ✓ Torx 15 bit
- ✓ 7mm socket
- ✓ 10mm socket
- ✓ 15mm socket
- ✓ 18mm socket
- ✓ 18mm wrench
- ✓ 3/4" socket
- ✓ Ratchet and extension

III. VEHICLE PREPARATION

1. Park vehicle on level surface.
2. Engage parking brake and disconnect battery.
3. Chock the wheels.
4. Using blue masking tape, mask along the profile of your truck above the bumper. This will help protect your truck from any accidental scratches.

IV. REMOVAL OF OE BUMPER

1. Open hood. Using a T-15 bit, remove two screws attacking hood latch release lever to latch. Remove latch and set aside. It will be reused.



****NOTE: DO NOT CLOSE THE HOOD UNTIL THE LEVER HAS BEEN REPLACED****

- Using a trim tool, remove ten clips from engine shroud. Remove shroud and set aside. It will be reused.



- Using a T-15 bit remove four screws holding the fender liner in place.(Both sides)



4. Using a 7mm socket, remove the three screws attaching the grill side panel to the body. These screws will be more accessible from inside the hood of the truck.(Both sides)

****NOTE: WHEN REMOVING GRILL SIDE PANEL ATTACHMENT WILL BECOME LOOSE OR DETACH. SET ASIDE AS IT WILL BE REUSED DURING REASSEMBLY****

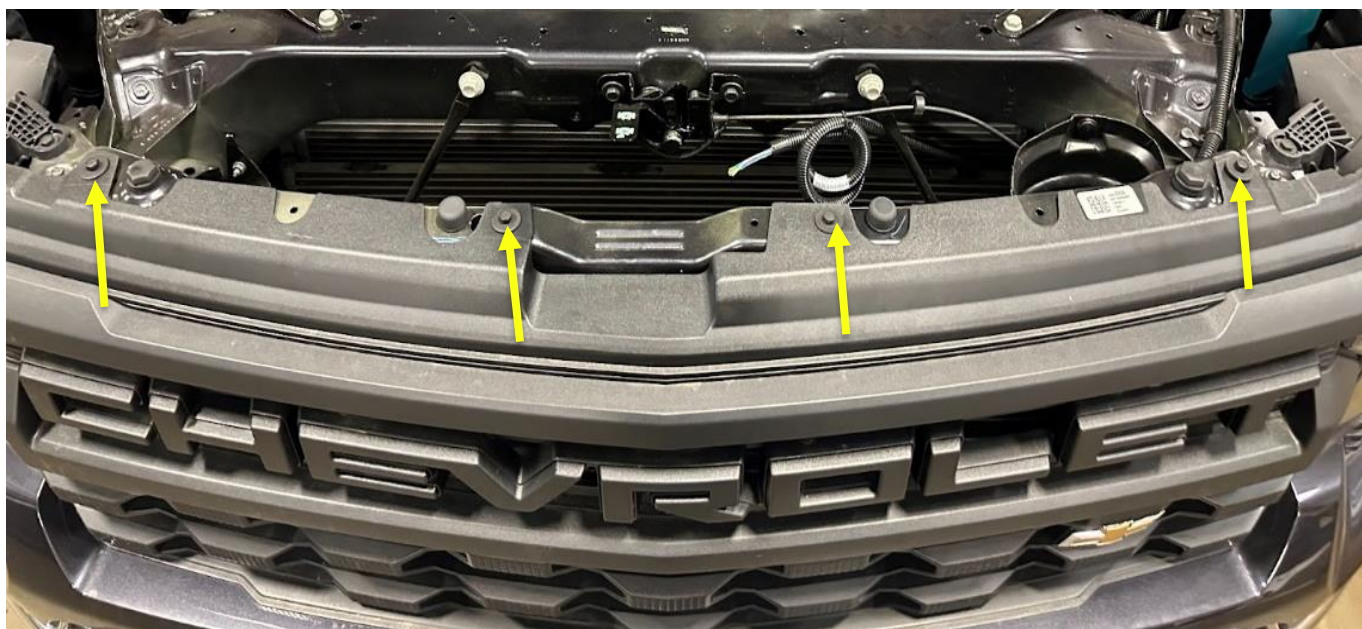


5. Carefully pull out on the grill side panel until separated from truck's face and grill.

6. Using a 10mm socket, remove the three bolts located at the bottom of the grill.



7. Using a 10mm socket, remove four screws attaching top of grill to core support.



8. Using your hand, pick up on the top of the grill and pull away from the truck. This will disengage tabs on the top of the grill and allow its removal.

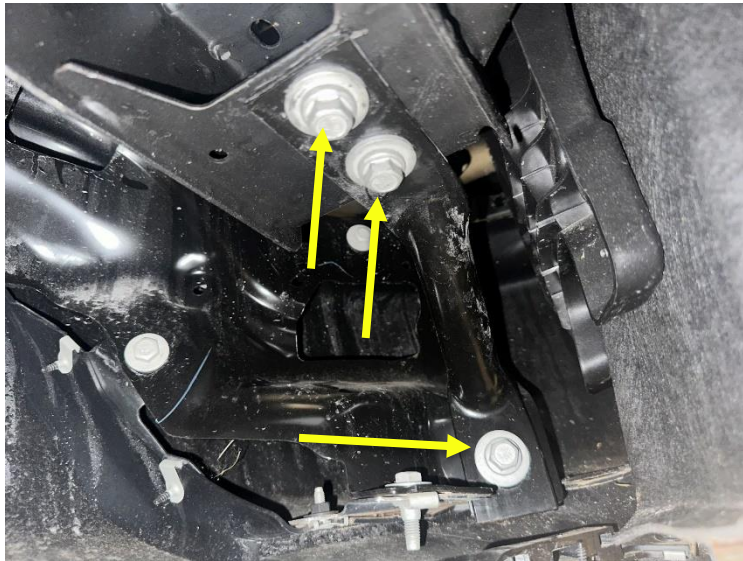


9. Gently pull out on the center of the grill to disengage the middle grill tabs attaching the center of the grill to the core support.
10. Set the grill aside. It will be reused.

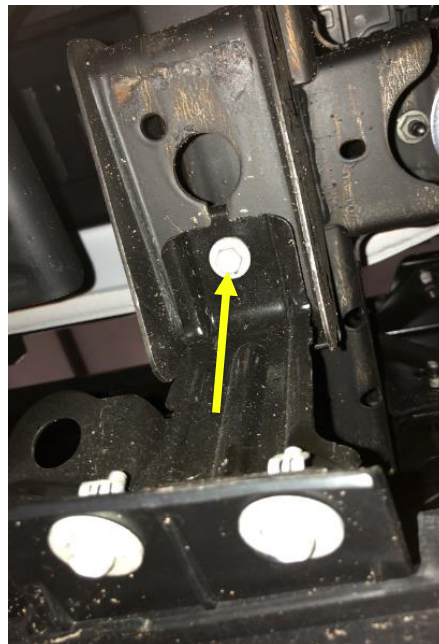
11. Using an 18mm socket, remove two bolts on each side attaching the bumper to the OE frame mount. Both are accessible by lifting the flexible rubber lining above the OE bumper. (Both sides)



12. Using a 15mm socket, remove three bolts attaching the side brace to the bumper/frame. Remove and set aside as it will not be reused. (Both sides)



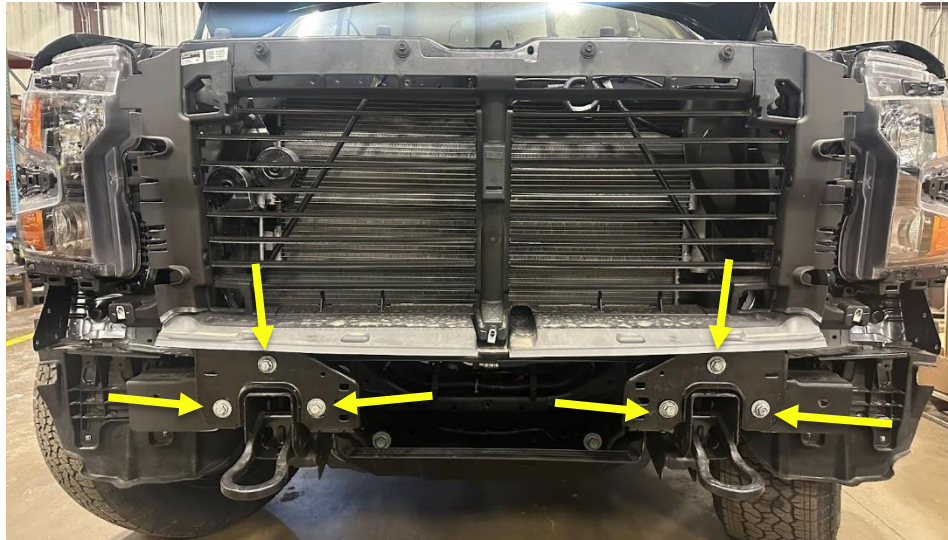
13. Using a 10mm socket, remove the bolt attaching bottom brace to bumper/frame. Remove braces and set aside. It will not be reused. (Both sides)



14. Gently remove the bumper once all bolts are removed.

****NOTE: UNPLUG ANY HARNESES ATTACHED TO BUMPER IF APPLICABLE****

15. Once the bumper is removed, remove the six bolts attaching the OE bumper mounts to the frame using a 15 mm socket. Remove mounts and set aside. OE hardware will be reused but OE mounts will not.



16. Using a $\frac{3}{4}$ " socket and wrench remove tow hooks and set aside. Keep OE hardware as it will be reused.

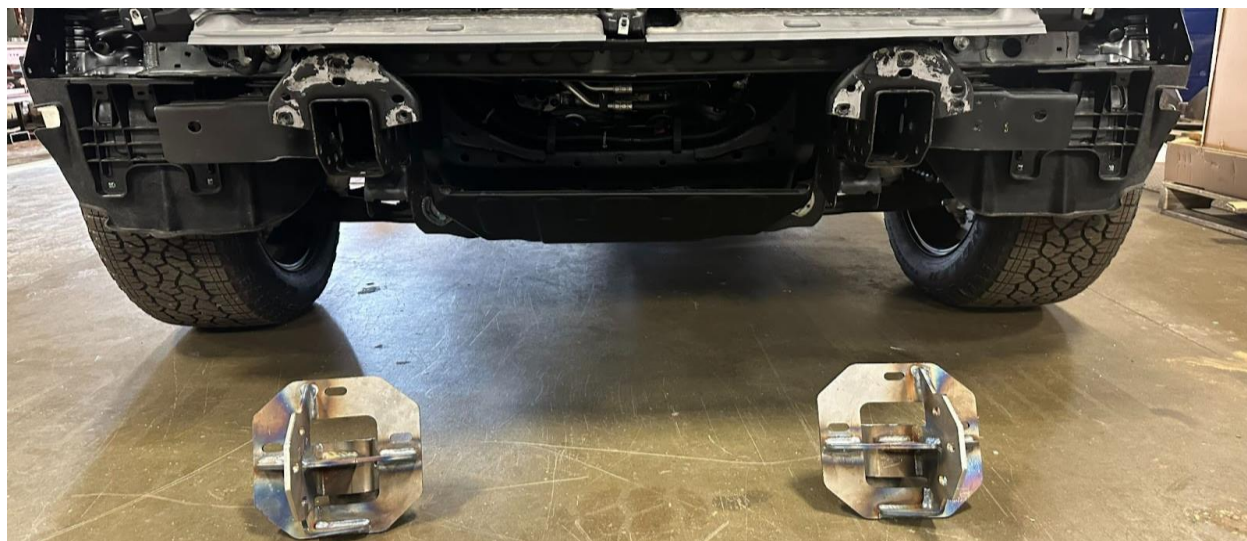
17. Replace the following parts in order:

- Grill
- Grill side panel
- Engine Shroud
- Hood latch lever, close hood



V. INSTALLATION OF HAMMERHEAD BUMPER

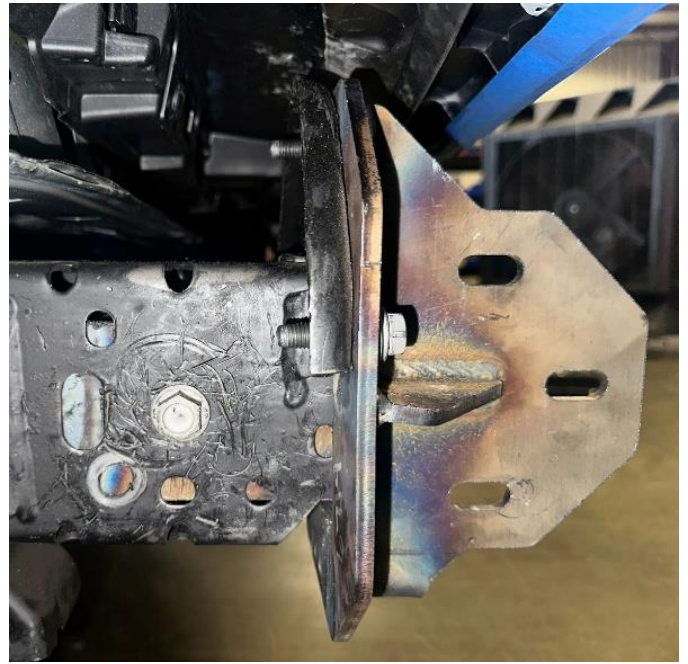
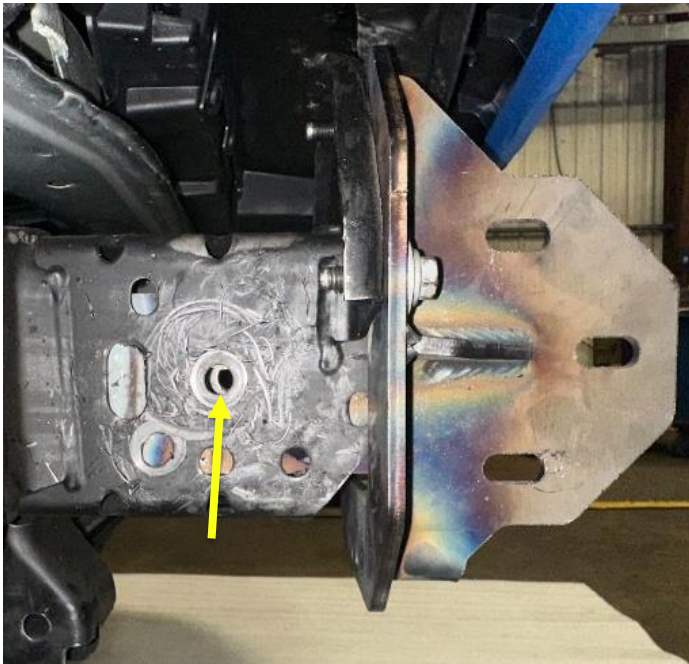
1. Lay out frame mounts as shown. (Mounting plate will be to the outside of the vehicle)



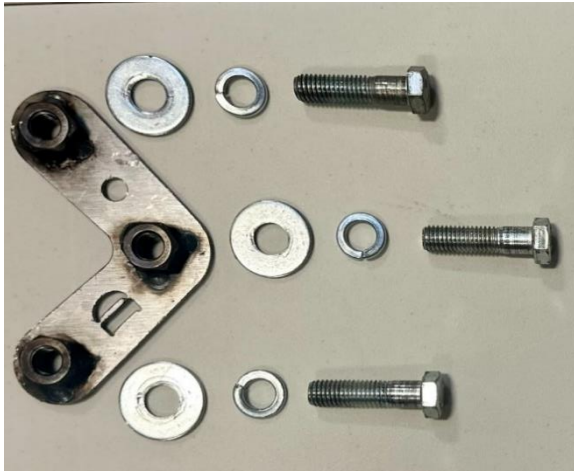
2. Install frame mounts using OE hardware as shown. Do not fully tighten.



3. Insert OE long bolt from tow hook through the side hole located on the frame. Fully tighten all frame mount bolts.



4. Using a hoist or a few helpers, lift the bumper onto the frame mounts and attach using hardware kit #58 and weldnut tab D. Start all bolts before aligning bumper. Ensure the bumper is pushed back as far as possible and snug bolts with a $\frac{3}{4}$ " socket or wrench.



5. Level bumper and ensure even spacing on both sides. Fully tighten all bolts. Remove masking tape.
6. Trim the wheel liner, so that it is not visible below the bumper.





**Congratulations! Your product installation is now complete.
Thank you for your purchase!**